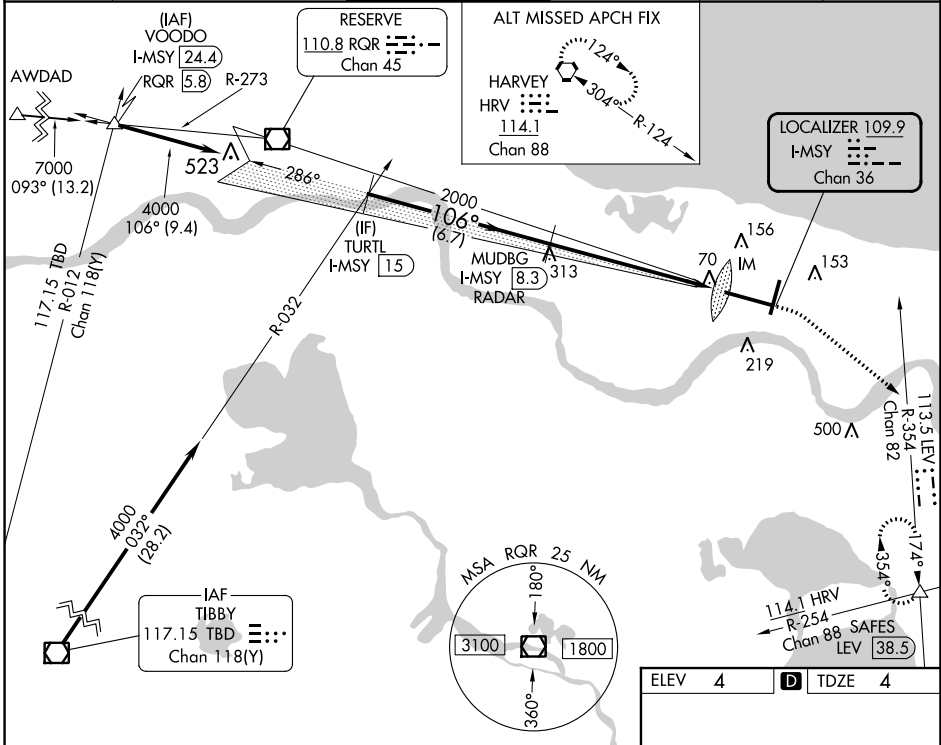


LOC/DME I-MSY 109.9 Chan 36	APP CRS 106°	Rwy Idg TDZE Apt Elev	9800 4 4
---	------------------------	-----------------------------	-------------------------------------

ILS RWY 11 (SA CAT I)
LOUIS ARMSTRONG NEW ORLEANS INTL (MSY)

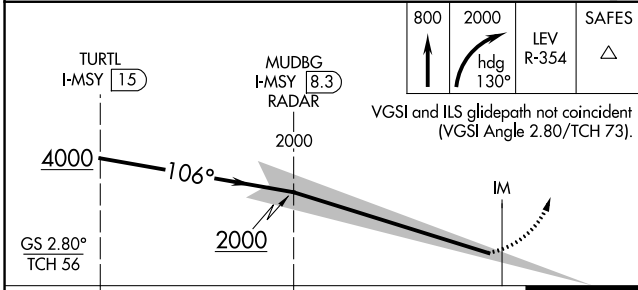
RADAR or DME required.	ALSF-2	MISSED APPROACH: Climb to 800 then climbing right turn to 2000 on heading 130° and on LEV VORTAC R-354 to SAFES INT/LEV 38.5 DME and hold.
------------------------	--------	--

D-ATIS 127.55	NEW ORLEANS APP CON WEST 125.5 350.35 EAST 133.15 290.3	NEW ORLEANS TOWER 119.5 254.3	GND CON 121.9 273.525	CLNC DEL 120.925	CPDLC
-------------------------	---	---	---------------------------------	----------------------------	-------

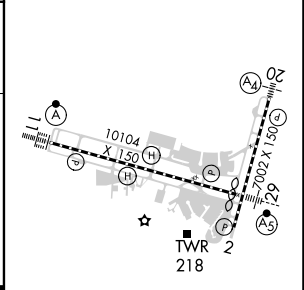


SC-4, 31 OCT 2024 to 28 NOV 2024

SC-4, 31 OCT 2024 to 28 NOV 2024



ELEV 4	TDZE 4
--------	--------



CATEGORY	A	B	C	D
S-ILS 11	RA 150/14		150	DA 154

SA CATEGORY I ILS - SPECIAL AIRCREW & AIRCRAFT CERTIFICATION REQUIRED

RLS Rwy 2
TDZ/CL Rwy 11
HRL All Runways