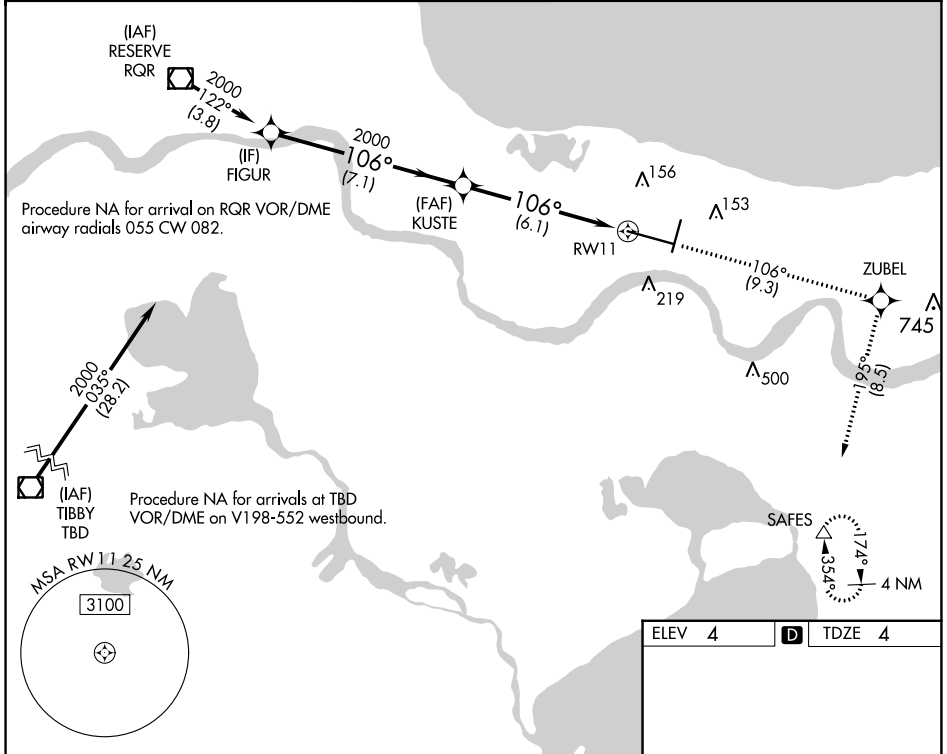


APP CRS	Rwy Idg	9800
106°	TDZE	4
	Apt Elev	4

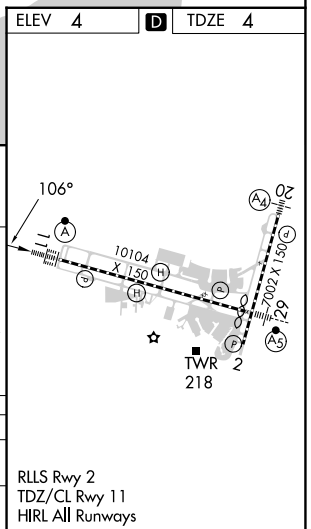
RNAV (RNP) Z RWY 11

LOUIS ARMSTRONG NEW ORLEANS INTL (MSY)

RNP AR APCH - GPS.		NEW ORLEANS TOWER		GND CON	CLNC DEL	CPDLC
<p>▼ For uncompensated Baro-VNAV systems, procedure NA below -1°C or above 54°C. For inop ALS, increase RNP 0.30 all Cats visibility to RVR 5500.</p>		<p>125.5 350.35 133.15 290.3</p>		<p>121.9 273.525</p>	<p>120.925</p>	
D-ATIS	NEW ORLEANS APP CON	NEW ORLEANS TOWER		GND CON	CLNC DEL	CPDLC
127.55	WEST 125.5 350.35 EAST 133.15 290.3	119.5 254.3		121.9 273.525	120.925	



VGSI and RNAV glidepath not coincident (VGSI Angle 2.80/TCH 73).	2000	tr 106°	ZUBEL	tr 195°	SAFES
FIGUR	KUSTE		RWY 11		
2000	2000		2000		
GP 3.00°	TCH 55				
7.1 NM		6.1 NM			
CATEGORY	A	B	C	D	
RNP 0.30 DA	367/35		363 (400-5/8)		
AUTHORIZATION REQUIRED					



SC-4, 31 OCT 2024 to 28 NOV 2024

SC-4, 31 OCT 2024 to 28 NOV 2024