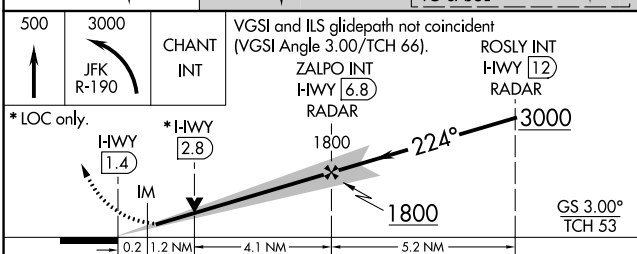
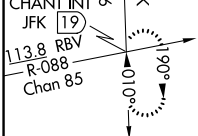
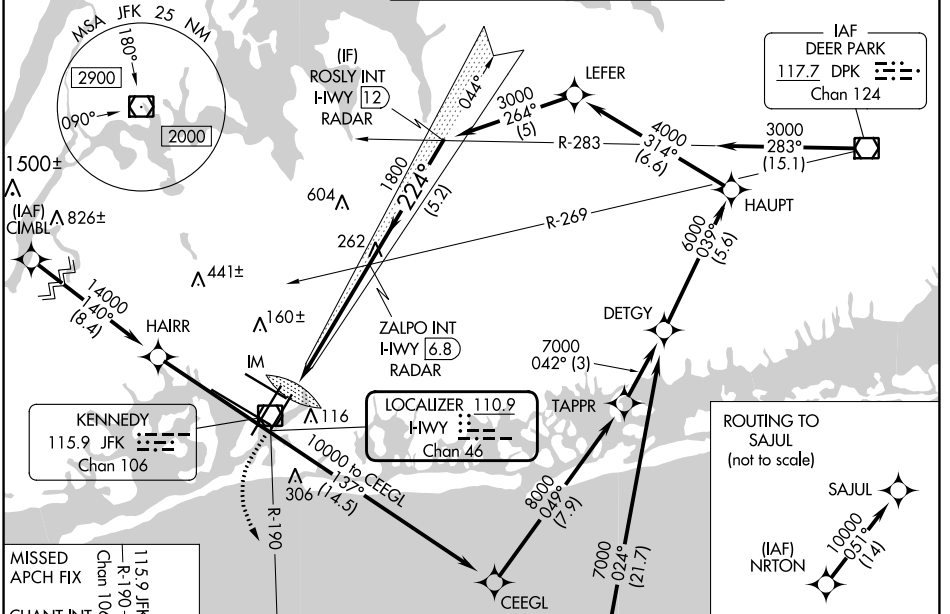


LOC/DME I-HWY	APP CRS	Rwy Idg	8400
110.9	224°	TDZE	12
Chan 46		Apt Elev	13

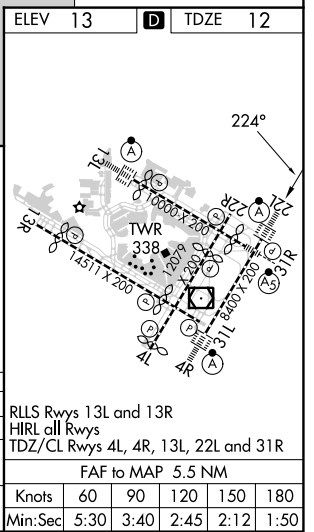
ILS or LOC RWY 22L

JOHN F KENNEDY INTL (JFK)

RNAV 1-GPS or RADAR required for procedure entry.		ALSF-2		MISSED APPROACH: Climb to 500 then climbing left turn to 3000 on JFK VOR/DME R-190 to CHANT INT/19 DME and hold.	
From CIMBL, NRTON: RNAV 1-GPS required.		A			
Simultaneous approach authorized.					
D-ATIS (ARR/DEP) (ARR-NE) (ARR-SW) 128.725 117.7 115.4		NEW YORK APP CON 128.125 269.0		KENNEDY TOWER Rwys 4R/22L and 13L/31R 119.1 281.55 Rwys 4L/22R and 13R/31L 123.9 281.55	
		GND CON 121.9 348.6		CLNC DEL 135.05 348.6	
		CPDLC			



ELEV 13	TDZE 12
SEE INSET FOR ROUTING TO SAJUL	
500	3000
JFK R-190	CHANT INT
*LOC only.	
H-WY 1.4	*H-WY 2.8
VGSI and ILS glidepath not coincident (VGSI Angle 3.00/TCH 66).	
ZALPO INT H-WY 6.8	ROSLY INT H-WY 12
*LOC only.	
H-WY 1.4	*H-WY 2.8
GS 3.00° TCH 53	
0.2	1.2 NM
4.1	5.2 NM
CATEGORY	A B C D
S-ILS 22L	212/18 200 (200-1/2)
S-LOC 22L	520/24 508 (600-1/2) 520/55 508 (600-1)
CIRCLING	640-1 627 (700-1) 680-1 3/4 667 (700-1 3/4) 680-2 667 (700-2)



NE-2, 31 OCT 2024 to 28 NOV 2024

NE-2, 31 OCT 2024 to 28 NOV 2024