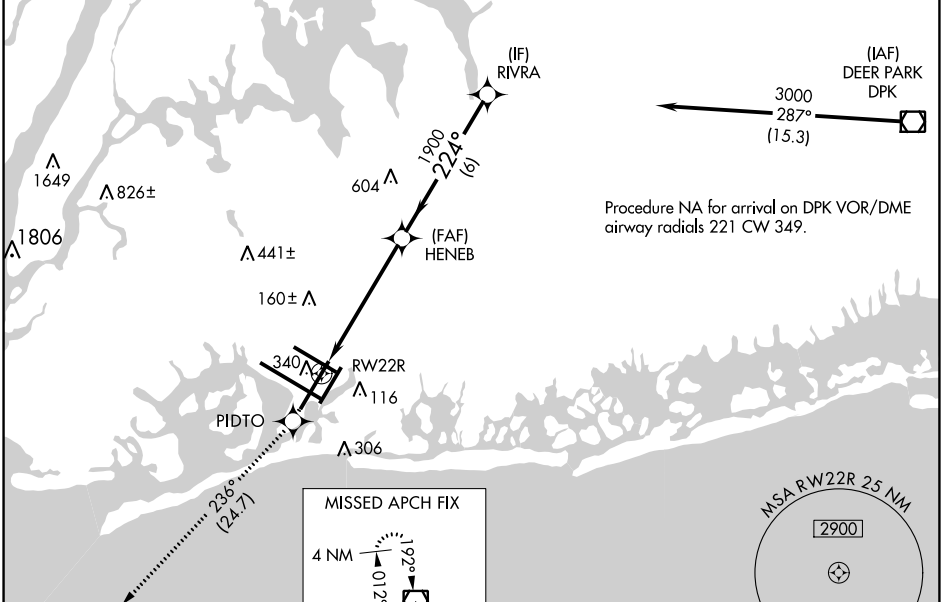


WAAS CH <b>40019</b> <b>W22B</b>	APP CRS <b>224°</b>	Rwy Idg <b>7795</b> TDZE <b>13</b> Apt Elev <b>13</b>
--	------------------------	---

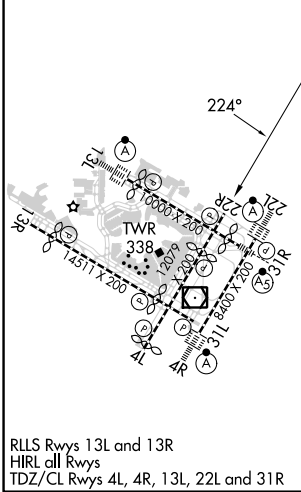
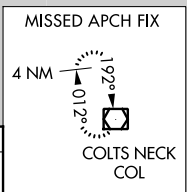
# RNAV (GPS) RWY 22R

JOHN F KENNEDY INTL (JFK)

RNP APCH.		MISSED APPROACH: Climb to 4000 direct PIDTO and on track 236° to COL VOR/DME and hold.	
D-ATIS (ARR/DEP) (ARR-NE) (ARR-SW) <b>128.725 117.7 115.4</b>	NEW YORK APP CON <b>128.125 269.0</b>	KENNEDY TOWER Rwys 4R/22L and 13L/31R <b>119.1 281.55</b> Rwys 4L/22R and 13R/31L <b>123.9 281.55</b>	GND CON <b>121.9 348.6</b> CLNC DEL <b>135.05 348.6</b> CPDLC



ELEV 13	<b>D</b>	TDZE 13
---------	----------	---------



4000	PIDTO	COL	VGSI and RNAV glidepath not coincident (VGSI Angle 3.00/TCH 77).
↑	tr 236°	☐	
*LNAV only.		HENEH	RIVRA
	*1.6 NM to RWY 22R	1900	3000
		1900	GP 3.00° TCH 59
	1.6 NM	4.1 NM	6 NM

CATEGORY	A	B	C	D
LPV DA		269/40	256 (300-¾)	
LNAV/VNAV DA		501-1½	488 (500-1½)	
LNAV MDA	600/55	587 (600-1)	600-1¾	587 (600-1¾)
<b>C</b> CIRCLING	640-1	627 (700-1)	680-1¾ 667 (700-1¾)	680-2 667 (700-2)

NEW YORK, NEW YORK  
 Amdt 1G 21MAY20

40°38'N-73°47'W

# RNAV (GPS) RWY 22R

NE-2, 31 OCT 2024 to 28 NOV 2024

NE-2, 31 OCT 2024 to 28 NOV 2024