

| | | |
|-------------------------|------------------------|---|
| WAAS CH 81819 | APP CRS 044° | Rwy Idg 8400 TDZE 12 Apt Elev 13 |
|-------------------------|------------------------|---|

RNAV (GPS) Y RWY 4R

JOHN F KENNEDY INTL (JFK)

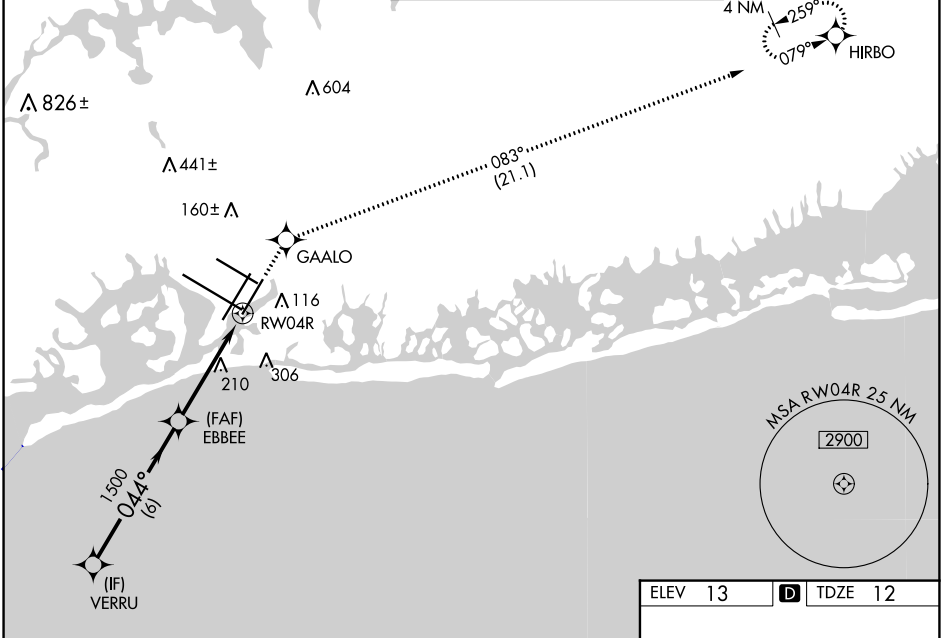
RNP APCH.

Simultaneous approach authorized. LNAV procedure NA during simultaneous operations. Use of FD or AP providing RNAV track guidance required during simultaneous operations. For uncompensated Baro-VNAV systems, LNAV/VNAV NA below -12°C or above 54°C. For inop ALS, increase LNAV/VNAV all Cats visibility to RVR 6000 and LNAV Cat C/D visibility to 1½ SM.

ALSF-2

MISSED APPROACH: (Do not exceed 210K until GAALO) Climb to 4000 direct GAALO and on track 083° to HIRBO and hold.

| | | | | | |
|---|--|---|-------------------------------|---------------------------------|-------|
| D-ATIS (ARR/DEP) (ARR-NE) (ARR-SW) 128.725 117.7 115.4 | NEW YORK APP CON 128.125 269.0 | KENNEDY TOWER Rwys 4R/22L and 13L/31R 119.1 281.55 Rwys 4L/22R and 13R/31L 123.9 281.55 | GND CON 121.9 348.6 | CLNC DEL 135.05 348.6 | CPDLC |
|---|--|---|-------------------------------|---------------------------------|-------|



NE-2, 31 OCT 2024 to 28 NOV 2024

NE-2, 31 OCT 2024 to 28 NOV 2024

| | |
|---------|------------------|
| ELEV 13 | D TDZE 12 |
|---------|------------------|

VGSI and RNAV glidepath not coincident (VGSI Angle 3.00/TCH 69).

| | | | | |
|--------------------|--------|-------------|------------------------|----------------------|
| VERRU | EBBEE | GAALO | HIRBO | |
| 2000 | 1500 | 4000 | fr 083° | |
| GP 3.00° TCH 53 | 1500 | *LNAV only | | |
| 6 NM | 3.1 NM | 1.4 NM | | |
| 044° | | | | |
| | | | | |
| CATEGORY | A | B | C | D |
| LPV DA | | 212/18 | 200 (200-½) | |
| LNAV/VNAV DA | | 369/40 | 357 (400-¾) | |
| LNAV MDA | 520/24 | 508 (600-½) | 520/55 | 508 (600-1) |
| C CIRCLING | 640-1 | 627 (700-1) | 680-1¾ 667 (700-1¾) | 680-2 667 (700-2) |

