

APP CRS	Rwy Idg	<b>4498</b>
<b>039°</b>	TDZE	<b>612</b>
	Apt Elev	<b>612</b>

# RNAV (GPS) RWY 4

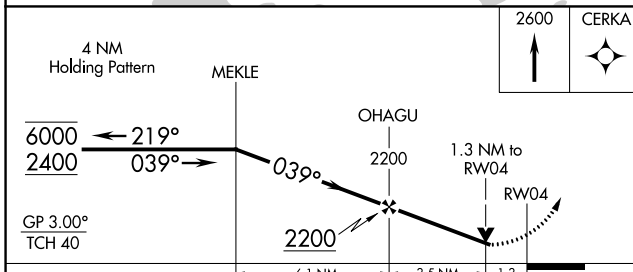
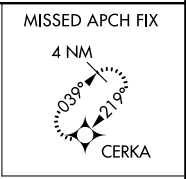
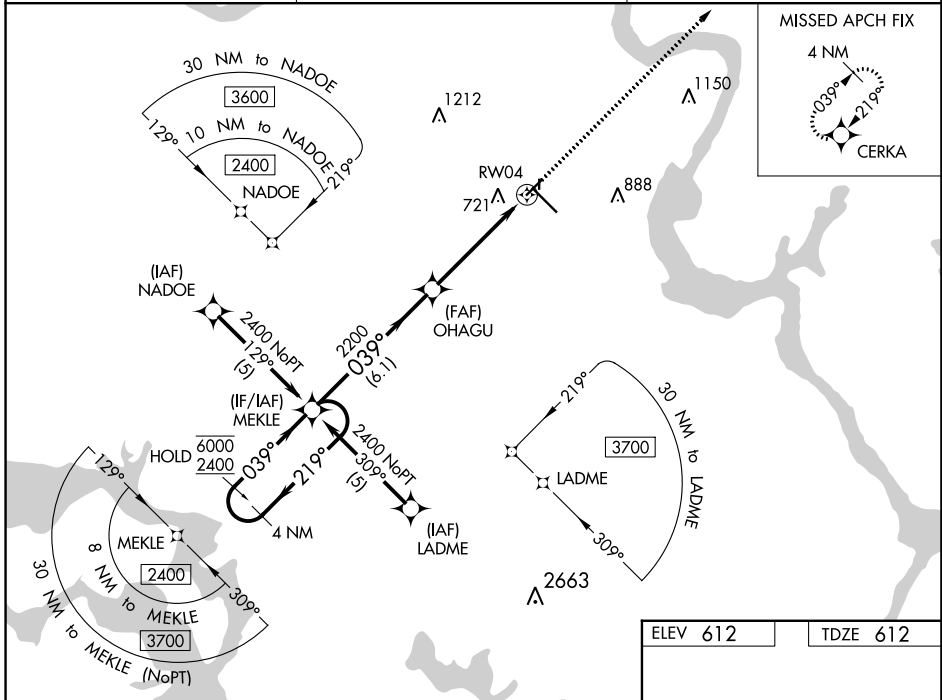
MUSKOGEE-DAVIS RGNL (MKO)

RNP APCH-GPS.

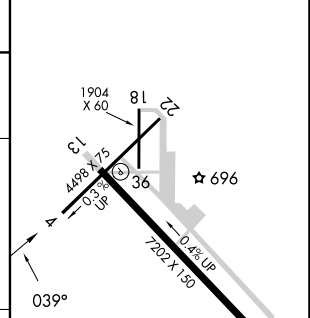
**▼** Rwy 4 helicopter visibility reduction below 3/4 SM NA. For uncompensated Baro-VNAV systems, LNAV/VNAV NA below -16°C or above 54°C. Straight-in Rwy 4 NA at night, Circling Rwy 4, 18, 22, 36 NA at night.

**▲** MISSED APPROACH: Climb to 2600 direct CERKA and hold.

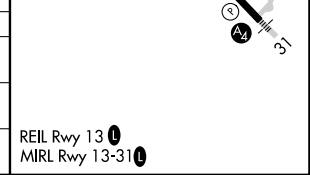
ASOS <b>135.025</b>	FORT WORTH CENTER <b>132.2 338.35</b>	UNICOM <b>122.8 (CTAF) 0</b>
------------------------	--	---------------------------------



ELEV 612	TDZE 612
----------	----------



CATEGORY	A	B	C	D
LNAV/ VNAV DA	1079-1 3/8 467 (500-1 3/8)			
LNAV MDA	1080-1	468 (500-1)	1080-1 3/8	468 (500-1 3/8)
CIRCLING	1140-1 528 (600-1)	1180-1 568 (600-1)	1320-2 708 (800-2)	1400-2 1/2 788 (800-2 1/2)



SC-1, 31 OCT 2024 to 28 NOV 2024

SC-1, 31 OCT 2024 to 28 NOV 2024