

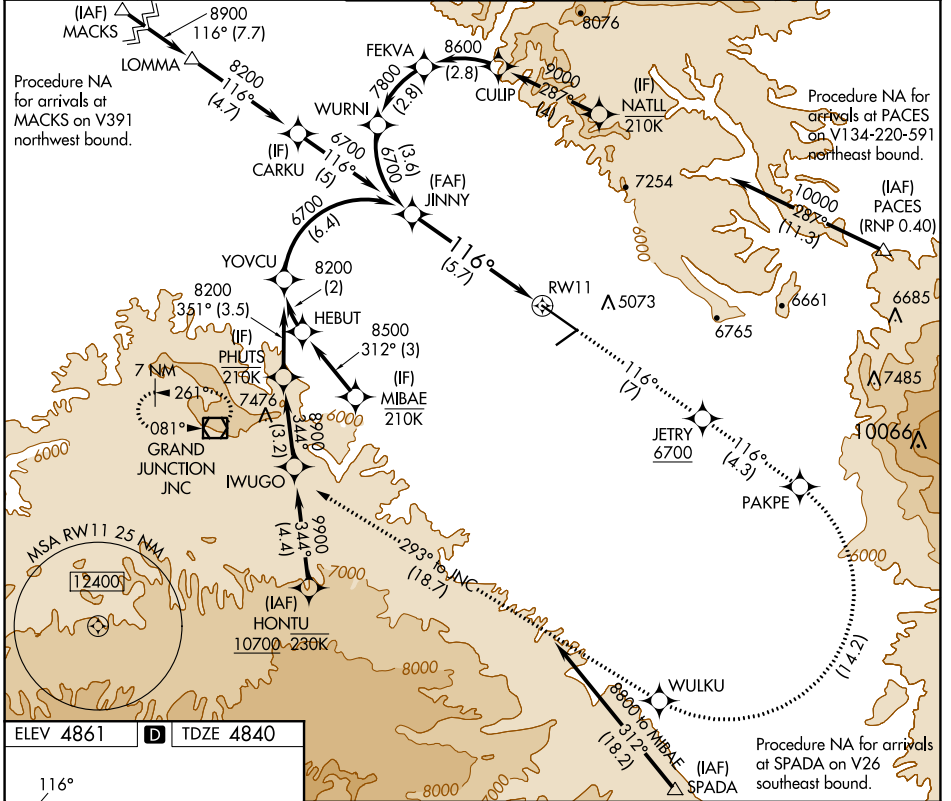
APP CRS 116°	Rwy Idg TDZE Apt Elev	9339 4840 4861
------------------------	-----------------------------	-------------------------------------------

RNAV (RNP) Z RWY 11

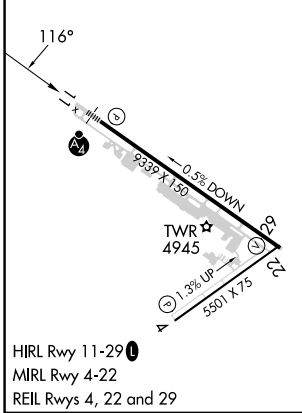
GRAND JUNCTION RGNL (GJT)

RNP AR APCH - GPS.		MALSF	MISSED APPROACH: Climb to 9000 on track 116° to JETRY, cross JETRY at or above 6700, and track 116° to PAKPE, right turn to WULKU, and track 293° to JNC VOR/DME and hold.
▼ For uncompensated Baro-VNAV systems, procedure NA below -17°C or above 54°C. For inoperative ALS, increase RNP 0.30 all Cats visibility to 1½ SM.			

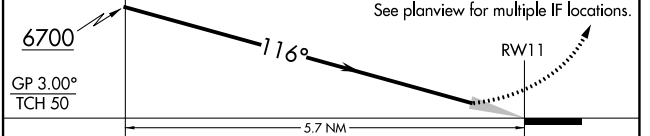
ATIS 118.55	DENVER APP CON * 119.7 317.4	GRAND JUNCTION TOWER * 118.1 (CTAF) 257.8	GND CON 121.7 257.8	UNICOM 122.95
-----------------------	----------------------------------------	-----------------------------------------------------	-------------------------------	-------------------------



ELEV 4861	D	TDZE 4840
-----------	---	-----------



JINNY	9000	JETRY	PAKPE	WULKU	JNC
6700	tr 116°	6700	tr 116°	tr 293°	



GP 3.00°				
TCH 50				
CATEGORY	A	B	C	D
RNP 0.10 DA		5183/40	343 (400-¾)	
RNP 0.30 DA		5346-1¼	506 (500-1¼)	

AUTHORIZATION REQUIRED

SW-1, 31 OCT 2024 to 28 NOV 2024

SW-1, 31 OCT 2024 to 28 NOV 2024