

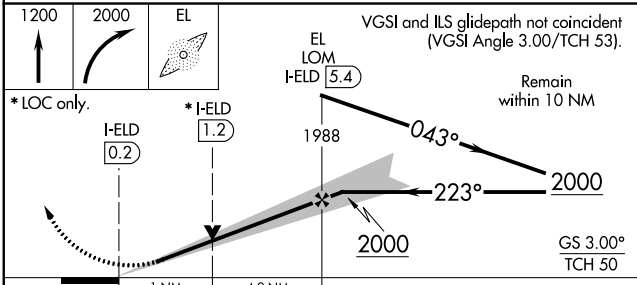
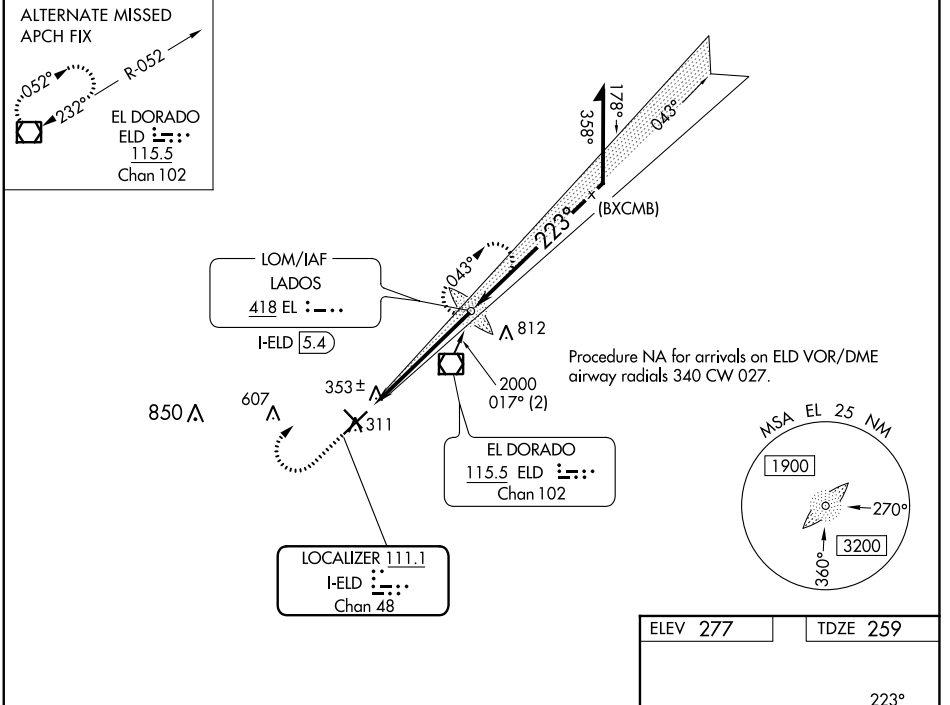
LOC/DME I-ELD <b>111.1</b> Chan <b>48</b>	APP CRS <b>223°</b>	Rwy Idg <b>6601</b> TDZE <b>259</b> Apt Elev <b>277</b>
---	------------------------	---

# ILS or LOC RWY 22

SOUTH ARKANSAS RGNL AT GOODWIN FLD (E.L.D)

ADF required. ▼ ▲ NA Circling Rwy 4, 13, 31 NA at night.	MALSR AS	MISSED APPROACH: Climb to 1200 then climbing right turn to 2000 direct LADOS LOM and hold.
--	-------------	--

ASOS <b>118,325</b>	FORT WORTH CENTER <b>128.2 269.1</b>	UNICOM <b>123.0</b> (CTAF) <b>0</b>
------------------------	---	--



ELEV 277	TDZE 259												
MIRL Rwy 13-31 <b>0</b> HIRL Rwy 4-22 <b>0</b>													
FAF to MAP 5.2 NM													
CIRCLING	<table border="1"> <tr> <th>Knots</th> <td>60</td> <td>90</td> <td>120</td> <td>150</td> <td>180</td> </tr> <tr> <th>Min:Sec</th> <td>5:12</td> <td>3:28</td> <td>2:36</td> <td>2:05</td> <td>1:44</td> </tr> </table>	Knots	60	90	120	150	180	Min:Sec	5:12	3:28	2:36	2:05	1:44
Knots	60	90	120	150	180								
Min:Sec	5:12	3:28	2:36	2:05	1:44								

CATEGORY	A	B	C	D
S-ILS 22	459-1/2 200 (200-1/2)			
S-LOC 22	620-1/2 361 (400-1/2)		620-3/4 361 (400-3/4)	
CIRCLING	740-1 463 (500-1)		920-1 643 (700-1 3/4)	920-2 643 (700-2)

SC-1, 31 OCT 2024 to 28 NOV 2024

SC-1, 31 OCT 2024 to 28 NOV 2024