

LOC I-HLG 109.7	APP CRS 033°	Rwy Idg 5002
		TDZE 1172
		Apt Elev 1194

ILS or LOC RWY 3

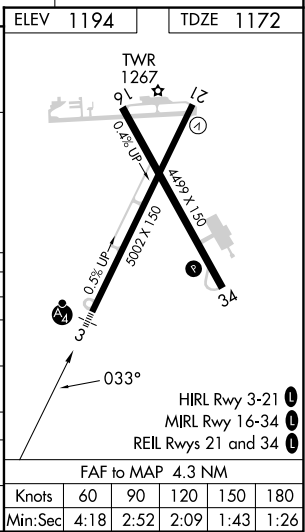
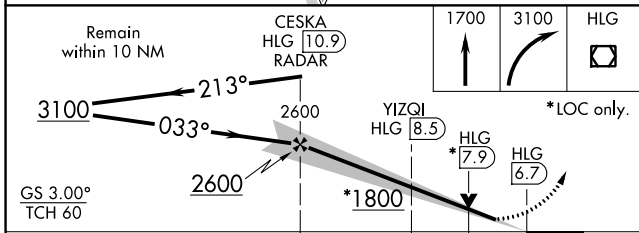
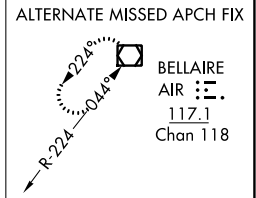
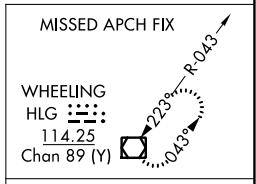
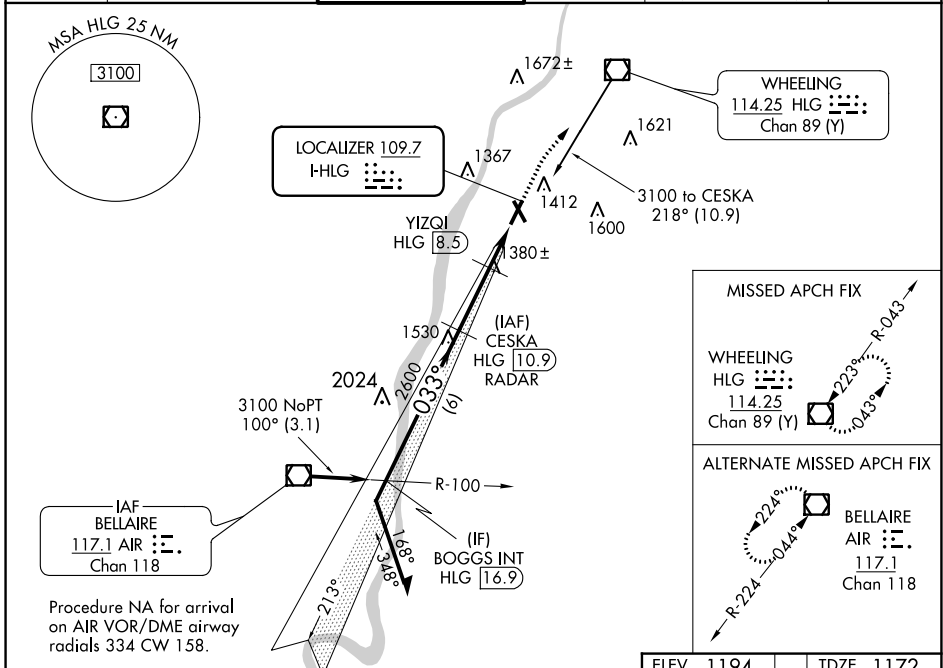
WHEELING OHIO COUNTY (HLG)

DME or RADAR required.

⚠ Autopilot coupled approach NA below 1401. Inop table does not apply to S-ILS all Cats and S-LOC Cats A/B.

MALSF MISSED APPROACH: Climb to 1700 then climbing right turn to 3100 direct HLG VOR/DME and hold. Continue climb-in-hold to 3100.

ASOS 127.375	PITTSBURGH APP CON 125.275 285.575	WHEELING TOWER * 118.1(CTAF) 0257.8	GND CON 121.75	CNLC DEL 125.275 (when twr closed)	UNICOM 122.95
------------------------	--	--	--------------------------	---	-------------------------



CATEGORY	A	B	C	D
S-ILS 3		1372/50	200 (200-1)	
S-LOC 3	1800/50	628 (700-1)	1800-1½	628 (700-1½)
C CIRCLING	1800-1	606 (700-1)	1920-2 726 (800-2)	1920-2¼ 726 (800-2¼)
YIZQI FIX MINIMUMS				
S-LOC 3	1640/50	468 (500-1)	1640/60	468 (500-1¼)
C CIRCLING	1720-1 526 (600-1)	1740-1 546 (600-1)	1920-2 726 (800-2)	1920-2¼ 726 (800-2¼)

NE-4, 31 OCT 2024 to 28 NOV 2024

NE-4, 31 OCT 2024 to 28 NOV 2024