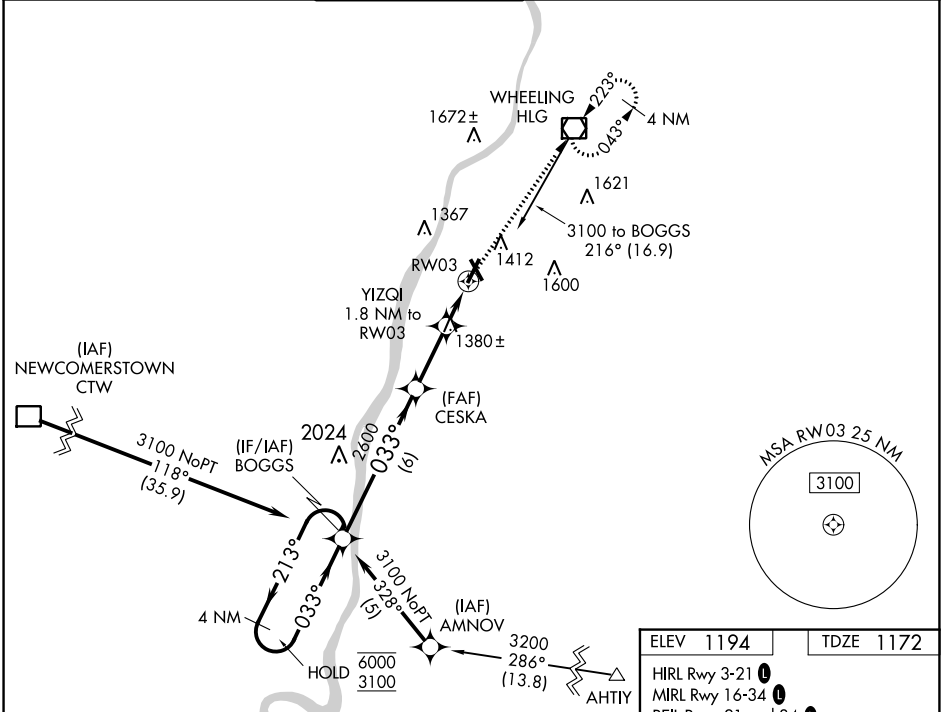


WAAS CH 90513 W03A	APP CRS 033°	Rwy Idg TDZE 1172 Apt Elev 1194	5002
--	------------------------	---	-------------

RNAV (GPS) RWY 3

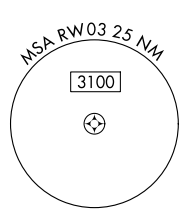
WHEELING OHIO COUNTY (HLG)

RNP APCH.		WHEELING TOWER * 118.1 (CTAF) 0257.8		GND CON 121.75	CLNC DEL 125.275 (when twr closed)	UNICOM 122.95
<p>▼ Inoperative table does not apply to LPV and LNAV/VNAV all Cats and LNAV Cats A/B. For uncompensated Baro-VNAV systems, LNAV/VNAV NA below -17°C or above 54°C.</p> <p>▲</p>		<p>MAISF</p>		<p>MISSED APPROACH: Climb 1600 then climb to 3100 direct HLG VOR/DME and hold, continue climb-in-hold to 3100.</p>		

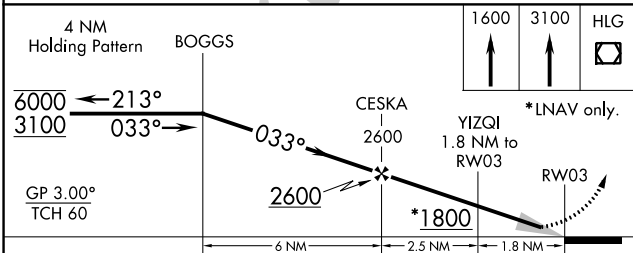


NE-4, 31 OCT 2024 to 28 NOV 2024

NE-4, 31 OCT 2024 to 28 NOV 2024



ELEV 1194	TDZE 1172
HIRL Rwy 3-21	MIRL Rwy 16-34
REIL Rwy 21 and 34	



CATEGORY	A	B	C	D
LPV DA		1372/50	200 (200-1)	
LNAV/VNAV DA		1439/50	267 (300-1)	
LNAV MDA	1640/55	468 (500-1)	1640/60	468 (500-1½)
CIRCLING	1720-1 526 (600-1)	1740-1 546 (600-1)	1920-2 726 (800-2)	1920-2¼ 726 (800-2¼)

