

CINCINNATI SIX DEPARTURE

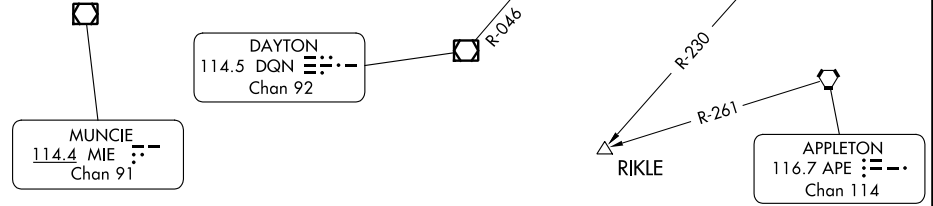
AL-655 (FAA)

COVINGTON, KENTUCKY

CINCINNATI DEP CON
 126.65 254.25 (001°-180°)
 128.7 254.25 (181°-360°)
 D-ATIS 135.3
 CLNC DEL
 127.175
 CPDLC
 GND CON
 121.7
 CINCINNATI TOWER
 118.3 360.85 (RWYS 18C/36C, 9/27)
 118.975 360.85 (RWY 18L/36R)
 133.325 360.85 (RWY 18R/36L)

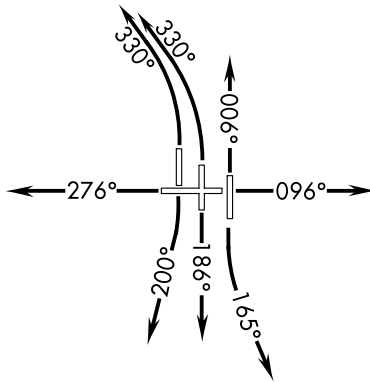
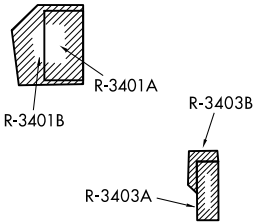
RADAR required.

**TOP ALTITUDE:
(JETS) 5000
(PROPS) 4000**



NOTE: SPECIAL INSTRUCTIONS: Appropriate departure frequency will be assigned by ATC.

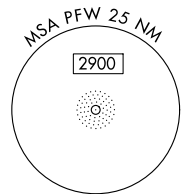
NOTE: Jets accelerate to 250K until reaching 10000 MSL, if unable, advise ATC.



TAKEOFF MINIMUMS:
 Rwy 9, 18L/C/R, 27,
 36L/C/R: Standard.

LOUISVILLE
 114.8 IU ::-
 Chan 95

LEXINGTON
 112.6 HYK ::-
 Chan 73



(CONTINUED ON FOLLOWING PAGE)

NOTE: Chart not to scale.

SE-1, 31 OCT 2024 to 28 NOV 2024

SE-1, 31 OCT 2024 to 28 NOV 2024

CINCINNATI SIX DEPARTURE

AL-655 (FAA)

COVINGTON, KENTUCKY



DEPARTURE ROUTE DESCRIPTION

TAKEOFF RUNWAY 9: Climb on heading 096° or as assigned, thence. . . .

TAKEOFF RUNWAY 18L: Climbing left turn on heading 165°, thence. . . .

TAKEOFF RUNWAY 18C: Climb on heading 186° or as assigned, thence. . . .

TAKEOFF RUNWAY 18R: Climbing right turn on heading 200°, thence. . . .

TAKEOFF RUNWAY 27: Climb on heading 276° or as assigned, thence. . . .

TAKEOFF RUNWAYS 36L/C: Climbing left turn on heading 330°, thence. . . .

TAKEOFF RUNWAY 36R: Climb on heading 006° or as assigned, thence. . . .

. . . .on RADAR vectors to filed/assigned route. Jet aircraft maintain 5000 feet, all other aircraft maintain 4000 feet. Expect clearance to requested altitude/flight level ten (10) minutes after departure.

SE-1, 31 OCT 2024 to 28 NOV 2024

SE-1, 31 OCT 2024 to 28 NOV 2024