

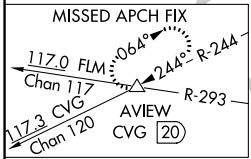
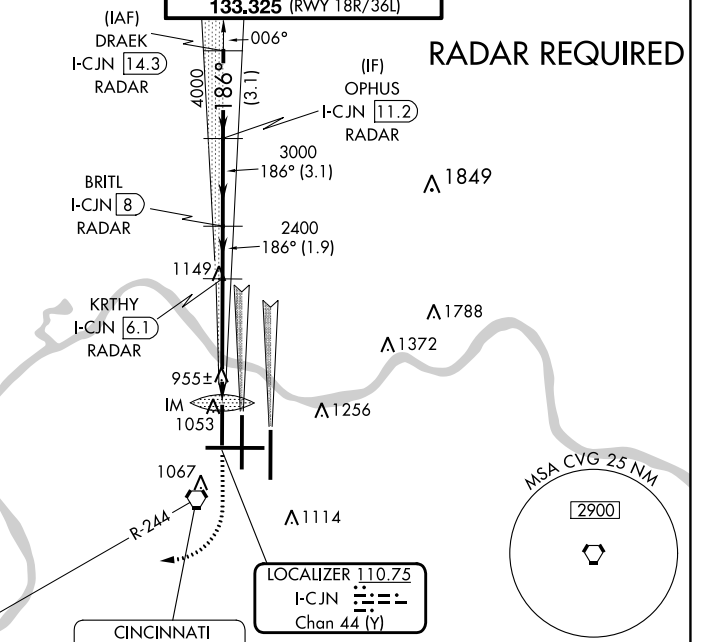
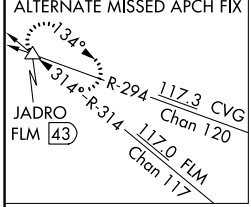
LOC/DME I-CJN <b>110.75</b> Chan <b>44</b> (Y)	APP CRS <b>186°</b>	Rwy Idg TDZE Apt Elev <b>8000</b> <b>868</b> <b>896</b>
--	------------------------	--

# ILS RWY 18R (CAT II)

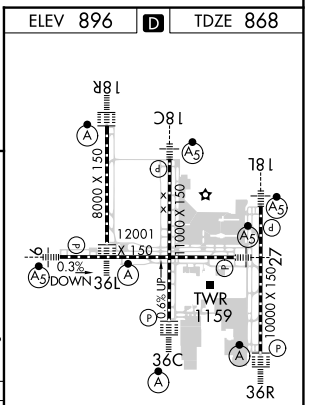
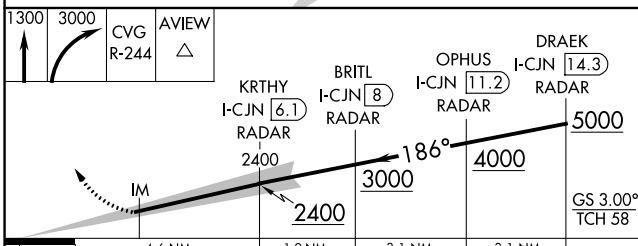
## CINCINNATI/NORTHERN KENTUCKY INTL (CVG)

**⚠ Simultaneous approach authorized with Rwy 18C and 18L.** **ALSIF-2** MISSED APPROACH: Climb to 1300 then climbing right turn to 3000 via CVG R-244 to AVIEW INT/ CVG 20 DME and hold.

D-ATIS ARR <b>134.375</b> DEP <b>135.3</b>	CINCINNATI APP CON <b>119.7 363.15</b> (090°-269°) <b>123.875 363.15</b> (270°-089°)	CINCINNATI TOWER <b>118.975 360.85</b> (RWY 18L/36R) <b>118.3</b> (RWYS 18C/36C, 09/27) <b>133.325</b> (RWY 18R/36L)	GND CON <b>121.7</b>	CLNC DEL <b>127.175</b>	CPDLC
---	--	---	-------------------------	----------------------------	-------



ELEV 896	<b>D</b>	TDZE 868
----------	----------	----------



CATEGORY	A	B	C	D
S-ILS-18R	RA 113/12 100 DA 968			

### CATEGORY II ILS - SPECIAL AIRCREW & AIRCRAFT CERTIFICATION REQUIRED

HIRL all Rwy's  
TDZ/CL all Rwy's except 27

SE-1, 31 OCT 2024 to 28 NOV 2024

SE-1, 31 OCT 2024 to 28 NOV 2024