

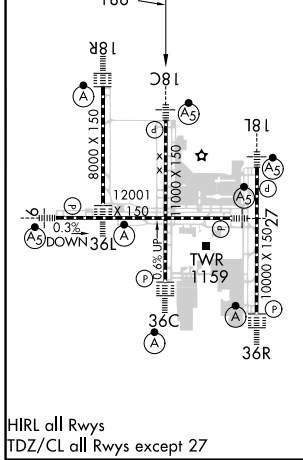
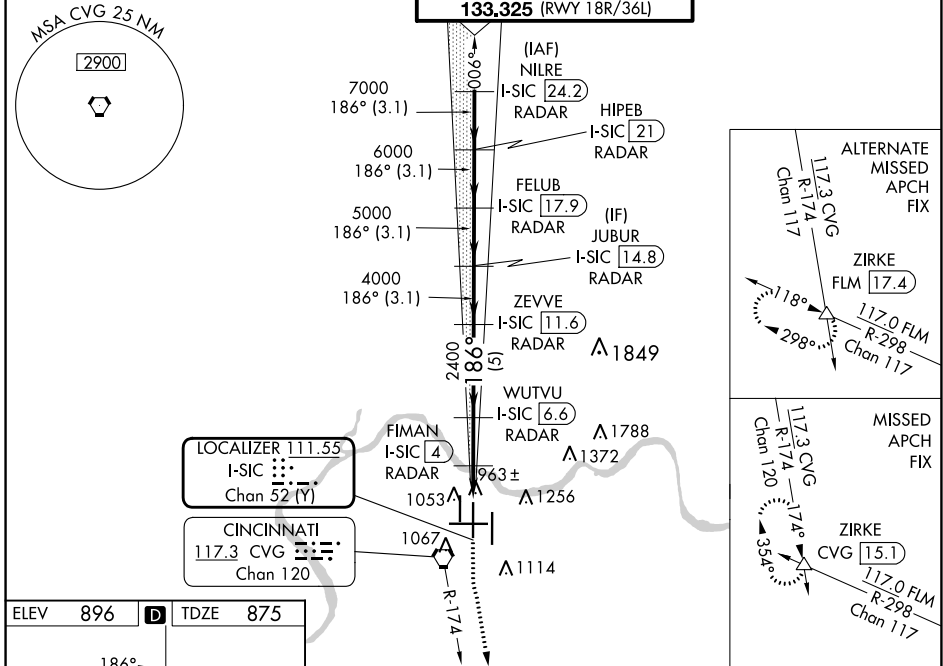
LOC/DME I-SIC 111.55 Chan 52 (Y)	APP CRS 186°	Rwy Idg 11000 TDZE 875 Apt Elev 896
--	------------------------	--

ILS or LOC RWY 18C

CINCINNATI/NORTHERN KENTUCKY INTL (CVG)

RADAR required for procedure entry. DME or RADAR required.	MALSR	MISSED APPROACH: Climb to 1500 then climbing left turn to 3000 on CVG R-174 to ZIRKE INT/CVG 15.1 DME and hold.
Simultaneous approach authorized.		

D-ATIS ARR 134.375 DEP 135.3	CINCINNATI APP CON 119.7 363.15 (090°-269°) 123.875 363.15 (270°-089°)	CINCINNATI TOWER 118.975 360.85 (RWY 18L/36R) 118.3 (RWYS 18C/36C, 09/27) 133.325 (RWY 18R/36L)	GND CON 121.7	CLNC DEL 127.175	CPDLC
---	--	---	-------------------------	----------------------------	-------



VGSi and ILS glidepath not coincident (VGSi Angle 3.00/TCH 71).

NILRE I-SIC [24.2] RADAR	HIPEB I-SIC [21] RADAR	FELUB I-SIC [17.9] RADAR	JUBUR I-SIC [14.8] RADAR	ZEVVE I-SIC [11.6] RADAR	WUTVU I-SIC [6.6] RADAR	FIMAN I-SIC [4] RADAR	* I-SIC [3] I-SIC [2]
--------------------------	------------------------	--------------------------	--------------------------	--------------------------	-------------------------	-----------------------	-----------------------

1500	3000	ZIRKE
↑	↻	△
	CVG R-174	

* LOC only

CATEGORY	A	B	C	D
S-ILS 18C	1075/18 200 (200-½)			
S-LOC 18C	1260/24 385 (400-½)		1260/35 385 (400-¾)	
CIRCLING	1460-1 564 (600-1)		1560-1¾ 664 (700-1¾)	1560-2 664 (700-2)

ILS or LOC RWY 18C

SE-1, 31 OCT 2024 to 28 NOV 2024

SE-1, 31 OCT 2024 to 28 NOV 2024