

WAAS CH 86803 W18B	APP CRS 186°	Rwy Idg 11000 TDZE 875 Apt Elev 896
--	------------------------	--

RNAV (GPS) Y RWY 18C

CINCINNATI/NORTHERN KENTUCKY INTL (CVG)

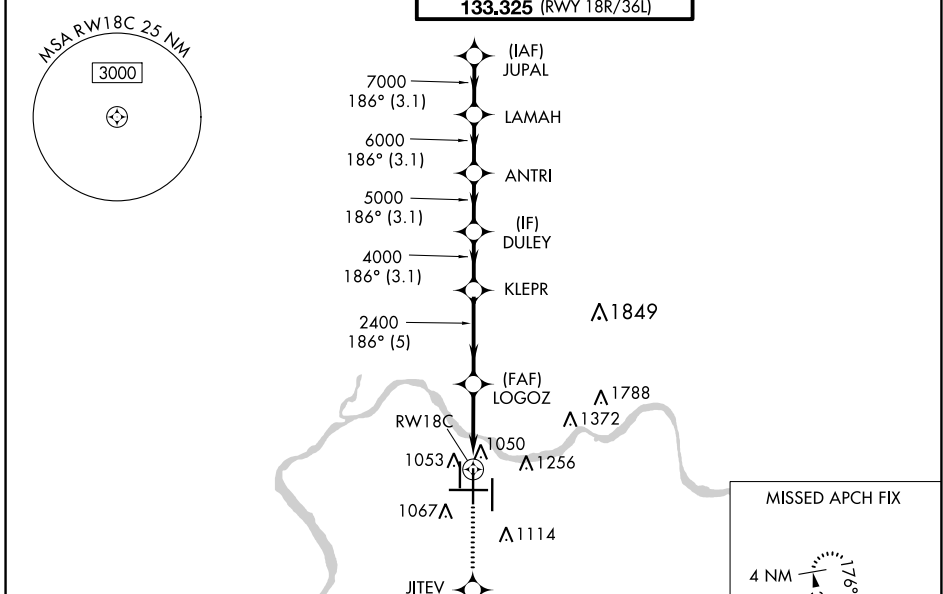
RADAR required for procedure entry. RNP APCH - GPS.

▼ For uncompensated Baro-VNAV systems, LNAV/VNAV NA below -17°C or above 54°C. Simultaneous approach authorized with Rwy 18 L/R. LNAV procedure NA during simultaneous operations. Use of FD or AP required during simultaneous operations. For inop ALS, increase LNAV Cat C/D visibility to 1 3/8 SM.

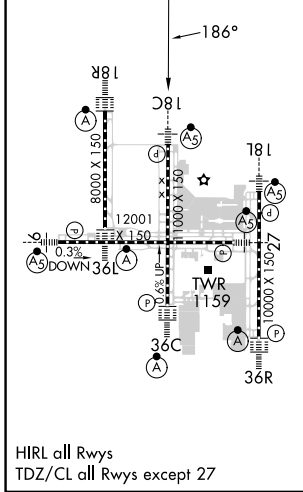


MISSED APPROACH:
Climb to 3000 direct
JITEV and on 181° track
to ZIRKE and hold.

D-ATIS ARR 134.375 DEP 135.3	CINCINNATI APP CON 119.7 363.15 (090°-269°) 123.875 363.15 (270°-089°)	CINCINNATI TOWER 118.975 360.85 (RWY 18L/36R) 118.3 (RWYS 18C/36C, 09/27) 133.325 (RWY 18R/36L)	GND CON 121.7	CLNC DEL 127.175	CPDLC
---	--	---	-------------------------	----------------------------	-------



ELEV 896	D	TDZE 875
----------	----------	----------



HIRL all Rwys
TDZ/CL all Rwys except 27

3000	JITEV	ZIRKE	VGSi and RNAV glidepath not coincident (VGSi Angle 3.00/TCH 71).			
↑	181°	△	LAMAH	JUPAL		
			8000			
			7000			
			6000			
			5000			
			4000			
			2400			
			2400			
			1.4 NM to RWY 18C			
			1.4	3.2 NM	5 NM	3.1 NM
			3.1 NM	3.1 NM	3.1 NM	3.1 NM
CATEGORY	A		B		D	
LPV DA	1075/18		200 (200-1/2)			
LNAV/VNAV DA	1398/55		523 (600-1)			
LNAV MDA	1360/24 485 (500-1/2)		1360/50 485 (500-1)			
C CIRCLING	1460-1 564 (600-1)		1560-1 3/4 664 (700-1 3/4)		1560-2 664 (700-2)	

SE-1, 31 OCT 2024 to 28 NOV 2024

SE-1, 31 OCT 2024 to 28 NOV 2024