

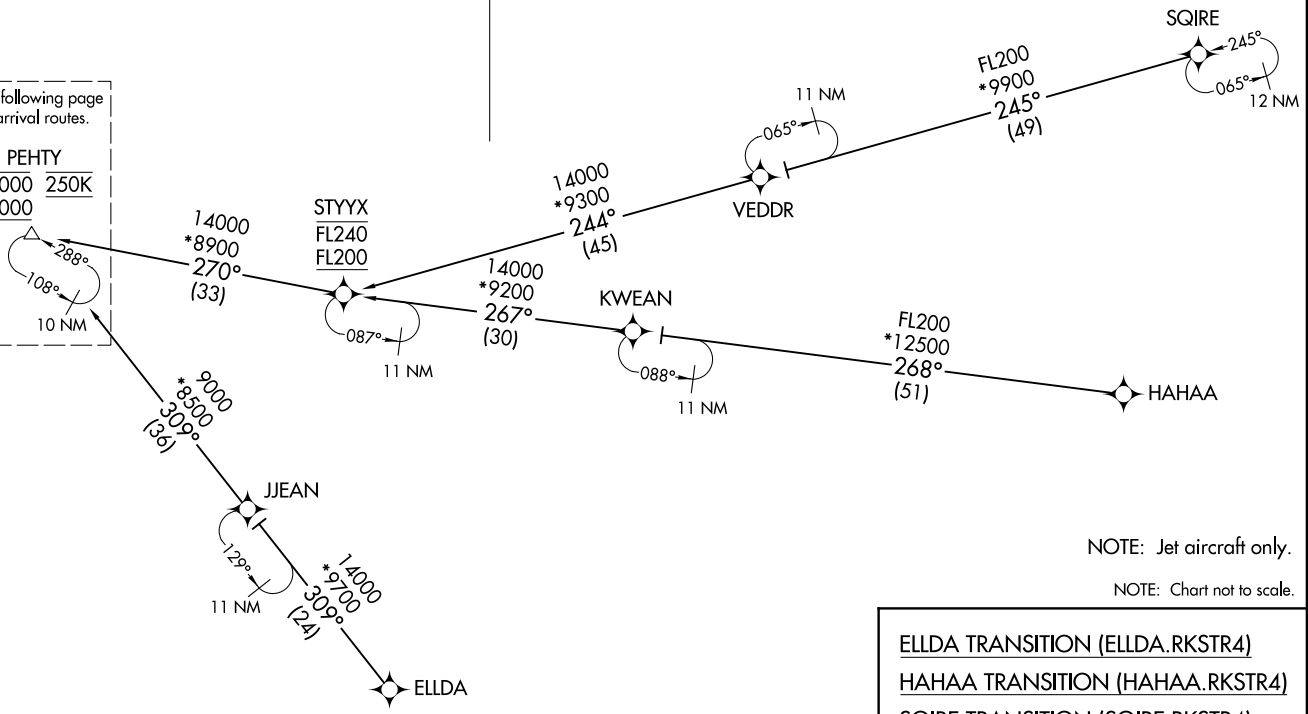
RNAV 1 - DME/DME/IRU or GPS.
RADAR required.

RKSTR FOUR ARRIVAL (RNAV) (PEHTY, RKSTR4) 31 OCT 24
LAS VEGAS, NEVADA
HARRY REID INTL (LAS)

LAS VEGAS APP CON
119.775 282.2
D-ATIS
132.4
LAS VEGAS TOWER
118.75 257.8 (Rwys 1L/19R, 1R/19L)
119.9 257.8 (Rwys 8L/26R, 8R/26L)

See following page
for arrival routes.

PEHTY	
16000	250K
14000	



NOTE: Jet aircraft only.
NOTE: Chart not to scale.

ELLDA TRANSITION (ELLDA.RKSTR4)
HAHA TRANSITION (HAHA.RKSTR4)
SQIRE TRANSITION (SQIRE.RKSTR4)

(CONTINUED ON FOLLOWING PAGE)

(PEHTY, RKSTR4) 24305
RKSTR FOUR ARRIVAL (RNAV) Transition Routes
AL-662 (FAA)
HARRY REID INTL (LAS)
LAS VEGAS, NEVADA

RNAV 1 - DME/DME/IRU or GPS.
RADAR required.

LAS VEGAS APP CON
119.775 282.2
D-ATIS
132.4
LAS VEGAS TOWER
118.75 257.8 (Rwys 1L/19R, 1R/19L)
119.9 257.8 (Rwys 8L/26R, 8R/26L)

RKSTR FOUR ARRIVAL (RNAV)
(PEHTY, RKSTR4) 31OCT24

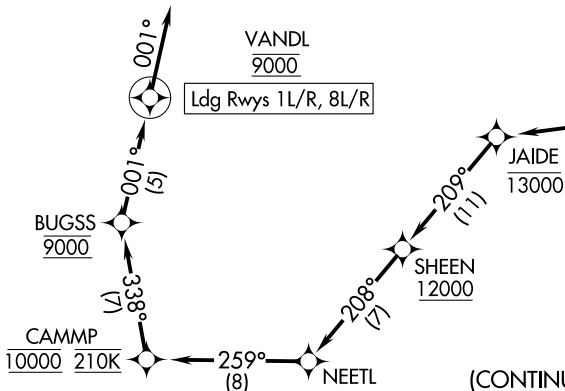
Arrival Routes

LAS VEGAS, NEVADA
HARRY REID INTL (LAS)

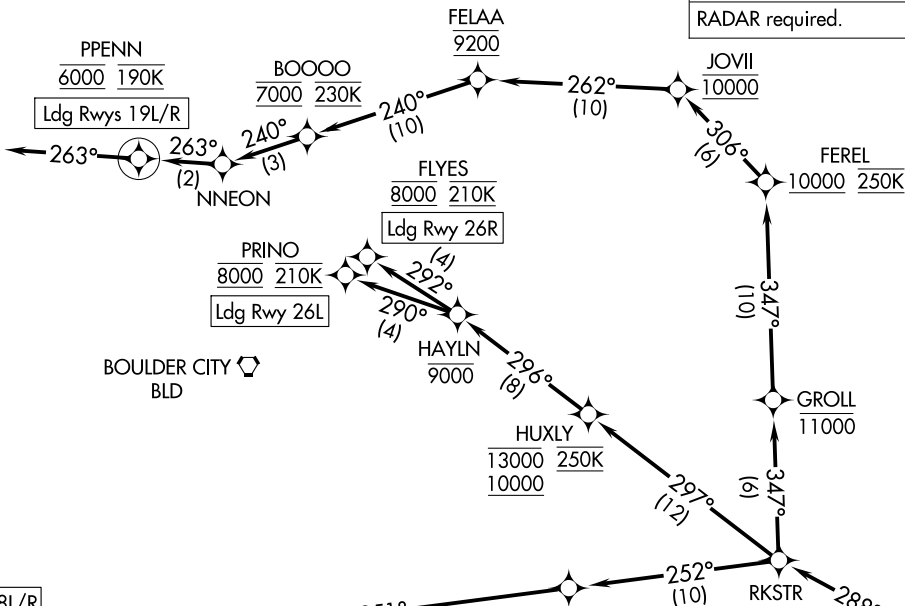
LAS VEGAS
LAS

BOULDER CITY
BLD

VANDL
9000
Ldg Rwys 1L/R, 8L/R



(CONTINUED ON FOLLOWING PAGE)



NOTE: Jet aircraft only.

NOTE: Chart not to scale.

(PEHTY, RKSTR4) 24305

Arrival Routes

AL-662 (FAA)

HARRY REID INTL (LAS)
LAS VEGAS, NEVADA

RKSTR FOUR ARRIVAL (RNAV)

ARRIVAL ROUTE DESCRIPTION

From PEHTY on track 288° to RKSTR.

LANDING RUNWAYS 1L/R, 8L/R: From RKSTR on track 252° to cross LEEEW at or above 14000 and at 250K, then on track 251° to cross JAIDE at or below 13000, then on track 209° to cross SHEEN at or above 12000, then on track 208° to NEETL, then on track 259° to cross CAMMP at 10000 and at 210K, then on track 338° to cross BUGSS at 9000, then on track 001° to cross VANDL at 9000, then on track 001°. Expect RADAR vectors to final approach course.

LANDING RUNWAYS 19L/R: From RKSTR on track 347° to cross GROLL at or below 11000, then on track 347° to cross FEREL at or above 10000 and at 250K, then on track 306° to cross JOVII at 10000, then on track 262° to cross FELAA at 9200, then on track 240° to cross BOOOO at 7000 and at 230K, then on track 240° to NNEON, then on track 263° to cross PPENN at 6000 and at 190K, then on track 263°. Expect RADAR vectors to final approach course.

LANDING RUNWAY 26L: From RKSTR on track 297° to cross HUXLY between 10000 and 13000 and at 250K, then on track 296° to cross HAYLN at or below 9000, then on track 290° to cross PRINO at 8000 and at 210K. Expect ILS or LOC RWY 26L approach.

LANDING RUNWAY 26R: From RKSTR on track 297° to cross HUXLY between 10000 and 13000 and at 250K, then on track 296° to cross HAYLN at or below 9000, then on track 292° to cross FLYES at 8000 and at 210K. Expect ILS or LOC RWY 26R approach.

LOST COMMUNICATIONS

LANDING RUNWAYS 1L/R, 8L/R: At VANDL proceed on the RNAV (GPS) RWY 1R approach, if unable maintain 8100 direct BLD VORTAC and then on the ILS or LOC RWY 26L approach.

LANDING RUNWAY 19L: At PPENN proceed on the RNAV (RNP) RWY 19L approach, if unable, proceed via last track to intercept the final approach course; if unable, maintain 7000 direct LAS VORTAC then direct BLD VORTAC and then on the ILS or LOC RWY 26L approach.

SW-4, 31 OCT 2024 to 28 NOV 2024

SW-4, 31 OCT 2024 to 28 NOV 2024