

WAAS CH <b>53631</b> <b>W22A</b>	APP CRS <b>218°</b>	Rwy ldg TDZE Apt Elev	<b>6145</b> <b>68</b> <b>75</b>
--	------------------------	-----------------------------	---------------------------------------

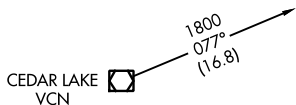
# RNAV (GPS) RWY 22

ATLANTIC CITY INTL (ACY)

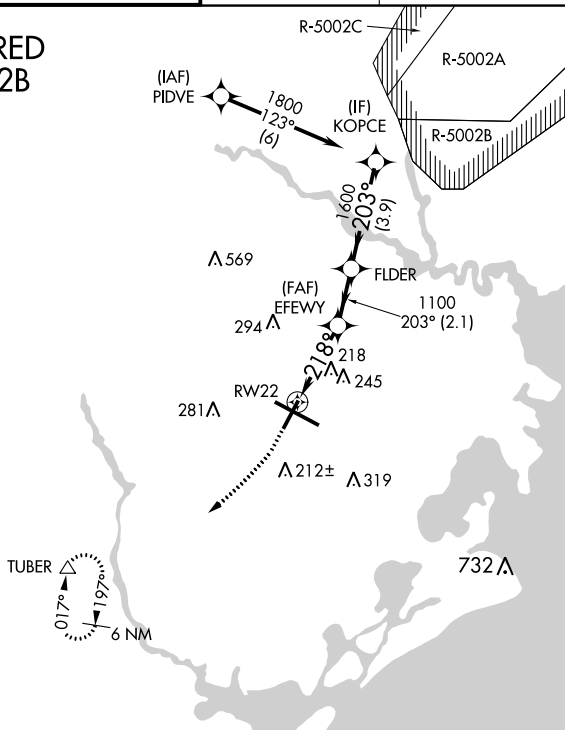
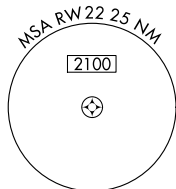
RNP APCH - GPS.	MISSED APPROACH: Climb to 600 then climbing right turn to 2000 direct TUBER and hold.
<p><b>▼</b> For uncompensated Baro-VNAV systems, LNAV/VNAV NA below -14°C (7°F) or above 54°C (130°F). Rwy 22 helicopter visibility reduction below ¼ SM NA.</p>	

ATIS <b>125.725 316.15</b>	ATLANTIC CITY APP CON <b>124.6 327.125</b>	ATLANTIC CITY TOWER <b>120.3 239.0</b>	GND CON <b>121.9 284.6</b>	CLNC DEL <b>127.85 353.775</b>
-------------------------------	---	---	-------------------------------	-----------------------------------

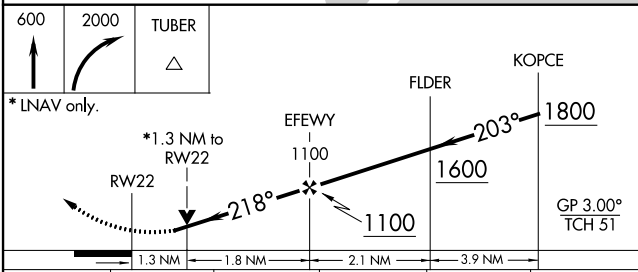
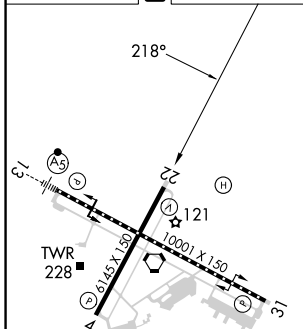
**RADAR REQUIRED WHEN R-5002B IS ACTIVE.**



Procedure NA for arrival on VCN VORTAC  
airway radials 066 CW 160.



ELEV 75	<b>D</b>	TDZE 68
---------	----------	---------



CATEGORY	A	B	C	D	E
LPV DA	364-1		296 (300-1)		
LNAV/VNAV DA	356-7/8		288 (300-7/8)		
LNAV MDA	520-1 452 (500-1)		520-1 1/8 452 (500-1 1/8)		
CIRCLING	540-1 465 (500-1)	600-1 525 (600-1)	620-1 1/2 545 (600-1 1/2)	640-2 565 (600-2)	760-2 1/2 685 (700-2 1/2)

TDZ/CL Rwy 13  
HIRL Rwy 4-22 and 13-31  
REIL Rwy 31