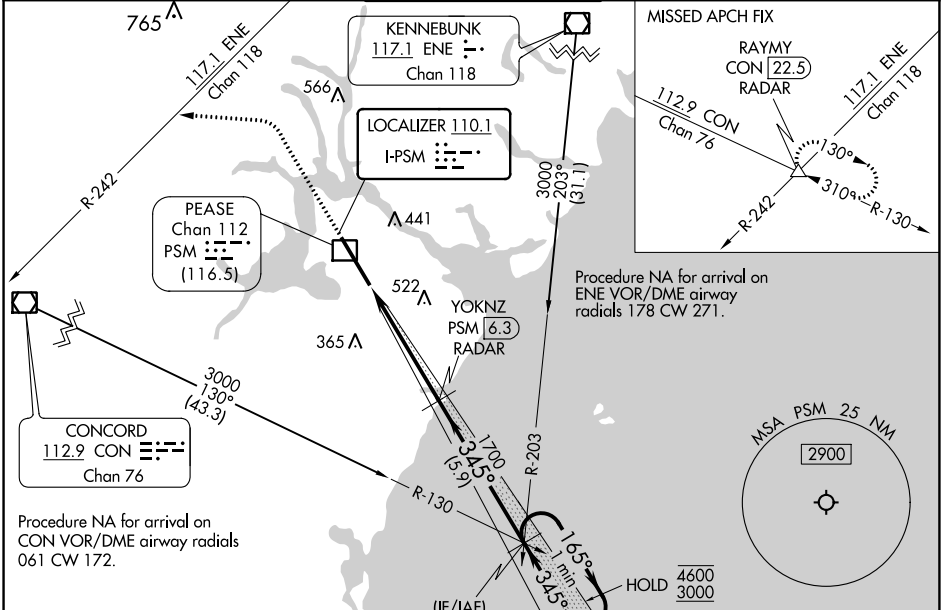


LOC I-PSM <b>110.1</b>	APP CRS <b>345°</b>	Rwy Idg TDZE Apt Elev	<b>11321</b> <b>84</b> <b>100</b>
---------------------------	------------------------	-----------------------------	---

# ILS or LOC RWY 34

PORTSMOUTH INTL AT PEASE (PSM)

DME or RADAR required.		PORTSMOUTH TOWER <b>128.4 269.0</b>		GND CON <b>120.95 275.8</b>	CLNC DEL <b>335.8</b>
<p>⚠ Circling NA east of Rwy 16-34. DME from PSM DME. Simultaneous reception of I-PSM and PSM DME required. For inop ALS, increase S-ILS 34 Cat E visibility to RVR 4000; increase S-LOC 34 Cat E visibility to 1 1/2 SM.</p>		<p>MALSRL AS</p>		<p>MISSED APPROACH: Climb to 1500 then dimbing left turn on heading 290° to 3000 and ENE VOR/DME R-242 to RAYMY INT/CON VOR/DME 22.5 DME/RADAR and hold.</p>	
ATIS <b>132.05 273.5</b>	BOSTON APP CON <b>125.05 269.4</b>	PORTSMOUTH TOWER <b>128.4 269.0</b>		GND CON <b>120.95 275.8</b>	CLNC DEL <b>335.8</b>

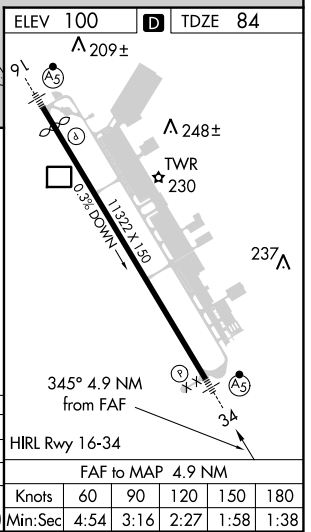
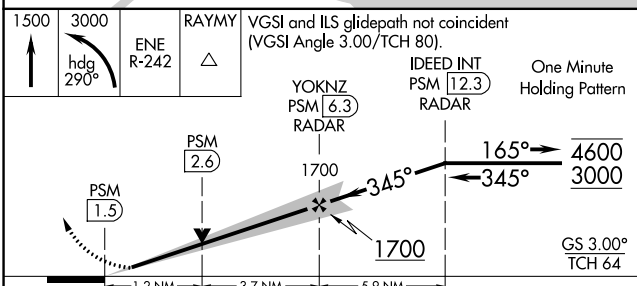


Procedure NA for arrival on ENE VOR/DME airway radials 178 CW 271.

Procedure NA for arrival on CON VOR/DME airway radials 061 CW 172.

Use of CON R-130 and ENE R-203 may be necessary to locate IDEED intersection.

(IF/IAF)  
IDEED INT  
PSM 12.3  
RADAR  
CON 43.3  
ENE 31.1



CATEGORY	A	B	C	D	E	HRL Rwy 16-34
S-ILS 34	284/24 200 (200-1/2)					
S-LOC 34	540/24	456 (500-1/2)	540/45		456 (500-3/4)	
CIRCLING	540-1	560-1	680-1 1/2	780-2 1/4	800-2 1/2	FAF to MAP 4.9 NM
	440 (500-1)	460 (500-1)	580 (600-1 1/2)	680 (700-2 1/4)	700 (700-2 1/2)	
Knots		60	90	120	150	180
Min:Sec		4:54	3:16	2:27	1:58	1:38

NE-1, 31 OCT 2024 to 28 NOV 2024

NE-1, 31 OCT 2024 to 28 NOV 2024