

LOC/DME I-SLV <b>110.9</b> Chan <b>46</b>	APP CRS <b>126°</b>	Rwy Idg TDZE Apt Elev	12R <b>8587</b>	12L <b>8831</b>
---	------------------------	-----------------------------	--------------------	--------------------

# ILS or LOC RWY 12R

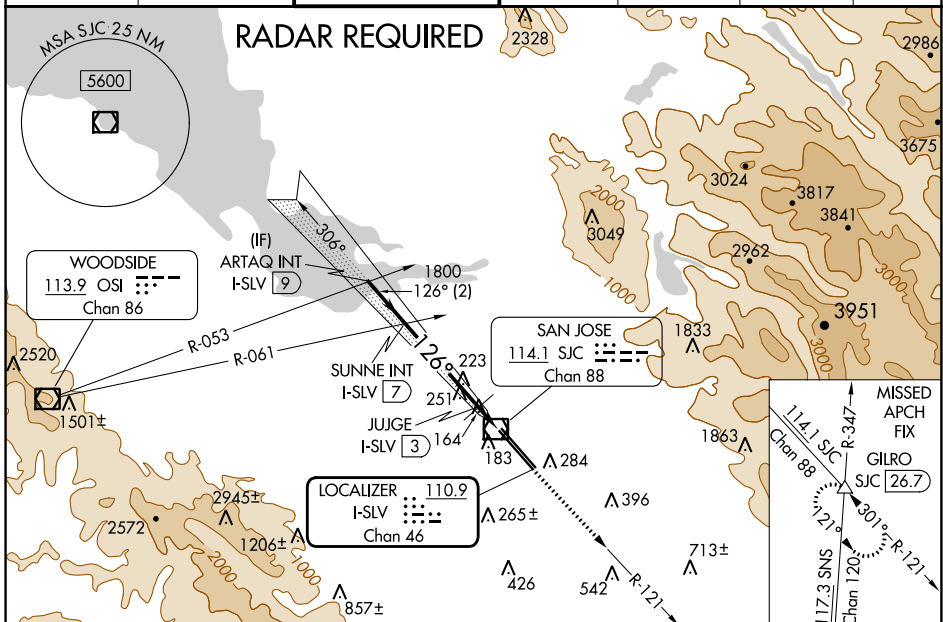
NORMAN Y MINETA SAN JOSE INTL (SJC)

**DME required.**  
For inoperative MALS, increase S-LOC 12R  
Cat C/D visibility to 1 mile.



**MISSED APPROACH:** Climb to 500 then climb to 4000  
on SJC VOR/DME R-121 to GILRO/SJC 26.7 DME  
and hold.

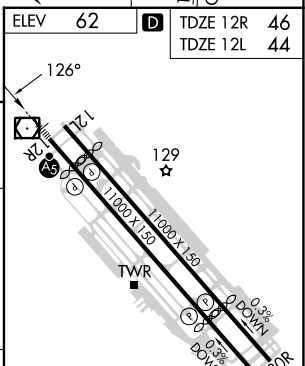
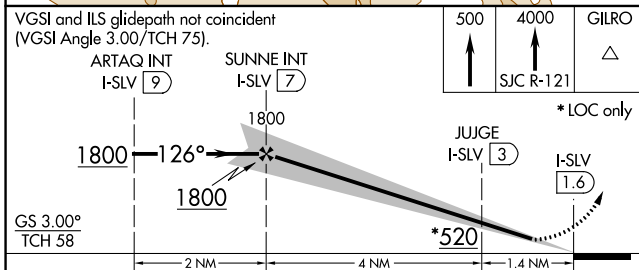
D-ATIS <b>126.95</b>	NORCAL APP CON <b>120.1 290.25</b>	SAN JOSE TOWER* <b>124.0 (CTAF) 0 257.6</b>	GND CON <b>121.7</b>	CLNC DEL <b>118.0</b>	CPDLC	UNICOM <b>122.95</b>
-------------------------	---------------------------------------	--	-------------------------	--------------------------	-------	-------------------------



SW-2, 31 OCT 2024 to 28 NOV 2024

SW-2, 31 OCT 2024 to 28 NOV 2024

ELEV 62	<b>D</b>	TDZE 12R 46	TDZE 12L 44
---------	----------	-------------	-------------



CATEGORY	A	B	C	D
S-ILS 12R	251-½		205 (200-½)	
S-LOC 12R	420-½ 374 (400-½)		420-⅝ 374 (400-⅝)	
SIDESTEP RWY 12L	600-1 556 (600-1)		600-2 556 (600-2)	

REIL Rwy 12L  
HIRL Rwy 12L-30R and 12R-30L