

WAAS CH 90106 W12A	APP CRS 126°	Rwy ldg TDZE Apt Elev	12R 8587 46 62	12L 8831 44 62
--	------------------------	-----------------------------	--	--

RNAV (GPS) Y RWY 12R

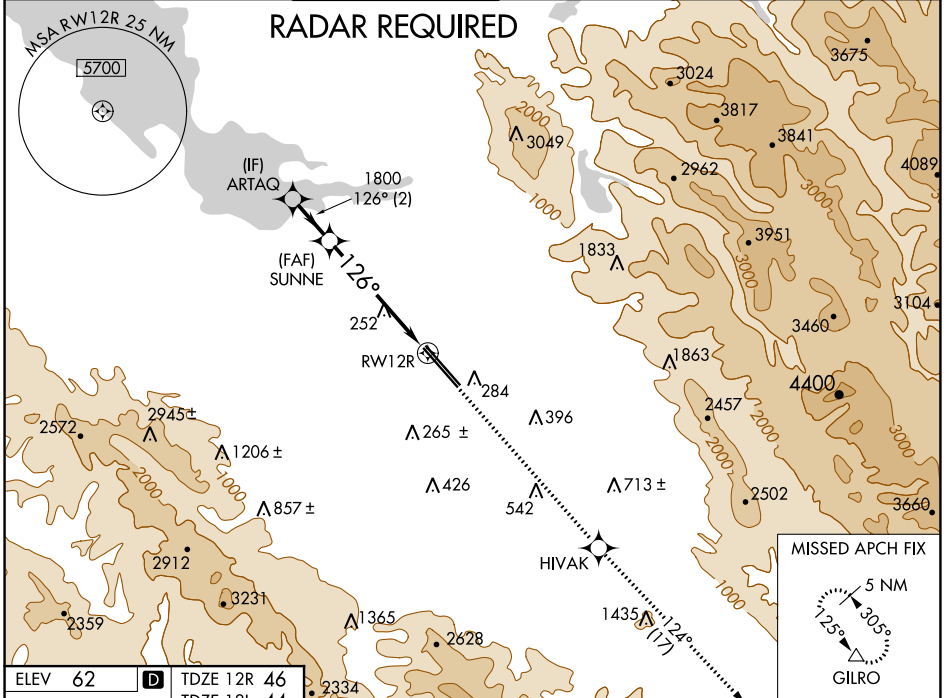
NORMAN Y MINETA SAN JOSE INTL (SJC)

For uncompensated Baro-VNAV systems, LNAV/VNAV NA below -1°C (31°F) or above 54°C (130°F). DME/DME RNP-0.3 NA. For inoperative MALS, increase LNAV/VNAV all Cats visibility to 1 mile and LNAV Cats C/D visibility to 1 3/8 mile.

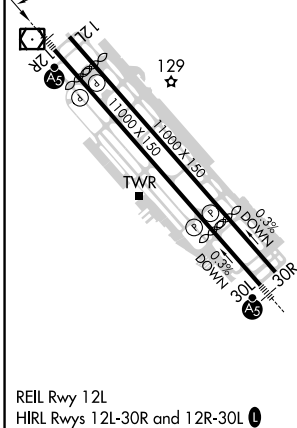
MALS Rwy 12R
AS

MISSED APPROACH: Climb to 4600 direct H1VAK and on track 124° to GILRO and hold.

D-ATIS 126.95	NORCAL APP CON 120.1 290.25	SAN JOSE TOWER * 124.0 (CTAF) 0 257.6	GND CON 121.7	CLNC DEL 118.0	CPDLC	UNICOM 122.95
-------------------------	---------------------------------------	---	-------------------------	--------------------------	-------	-------------------------

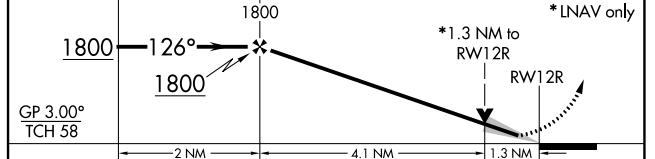


ELEV 62	D	TDZE 12R 46	TDZE 12L 44
---------	---	-------------	-------------



VGSI and RNAV glidepath not coincident (VGSI Angle 3.00/TCH 75).

4600 H1VAK tr 124° GILRO
*LNAV only



CATEGORY	A	B	C	D
LPV DA	246-1/2		200 (200-1/2)	
LNAV/VNAV DA	371-5/8 325 (400-5/8)		371-1 325 (400-1)	
LNAV MDA	520-1/2 474 (500-1/2)		520-1 474 (500-1)	
SIDESTEP 12L	520-1 476 (500-1)		520-1 1/2 476 (500-1 1/2) 520-2 476 (500-2)	

SW-2, 31 OCT 2024 to 28 NOV 2024

SW-2, 31 OCT 2024 to 28 NOV 2024