

WAAS CH <b>81924</b> <b>W19A</b>	APP CRS <b>193°</b>	Rwy Idg TDZE Apt Elev	<b>5516</b> <b>78</b> <b>80</b>
--	------------------------	-----------------------------	---------------------------------------

# RNAV (GPS) RWY 19

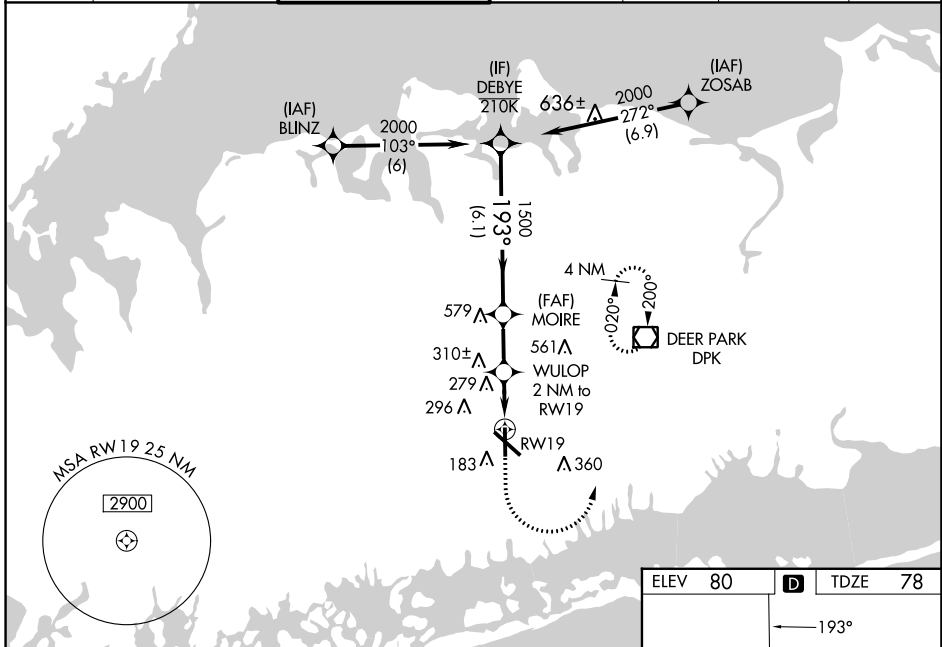
REPUBLIC (F/RG)

RNP APCH - GPS.

**⚠** Helicopter visibility reduction below  $\frac{3}{4}$  SM NA.  
For uncompensated Baro-VNAV systems, LNAV/VNAV NA below -12°C or above 54°C.

**MISSED APPROACH:**  
(Do not exceed 210K until DPK VOR/DME)  
Climb to 2000 then climbing left turn to 3000 direct DPK VOR/DME and hold, continue climb-in-hold to 3000.

ATIS <b>126.65</b>	NEW YORK APP CON <b>128.125 269.0</b>	REPUBLIC TOWER ★ <b>118.8</b> (CTAF) <b>0 279.65</b>	GND CON <b>121.6 269.6</b>	CLNC DEL <b>128.25</b>	CLNC DEL <b>128.25</b> (When twr closed)	UNICOM <b>122.95</b>
-----------------------	--	---	-------------------------------	---------------------------	--	-------------------------



NE-2, 31 OCT 2024 to 28 NOV 2024

NE-2, 31 OCT 2024 to 28 NOV 2024

	DEBYE	MOIRE	WULOP 2 NM to RWY19	RWY19
	2000	1500	800	
	193°	1500	1.2 NM to RWY19	
	GP 3.20° TCH 41			
	6.1 NM	2.1 NM	0.8 NM	1.2 NM
CATEGORY	A	B	C	D
LPV DA		328- $\frac{3}{4}$	250 (300- $\frac{3}{4}$ )	
LNAV/VNAV DA		504-1 $\frac{1}{4}$	426 (500-1 $\frac{1}{2}$ )	
LNAV MDA	520-1	442 (500-1)	520-1 $\frac{3}{8}$	442 (500-1 $\frac{3}{8}$ )
CIRCLING	640-1 560 (600-1)	720-1 640 (700-1)	860-2 $\frac{1}{4}$ 780 (800-2 $\frac{1}{4}$ )	1000-3 920 (1000-3)

