

VORTAC OSH <b>116.75</b> Chan <b>114 (Y)</b>	APP CRS <b>265°</b>	Rwy Idg <b>5648</b> TDZE <b>786</b> Apt Elev <b>808</b>
--	------------------------	---

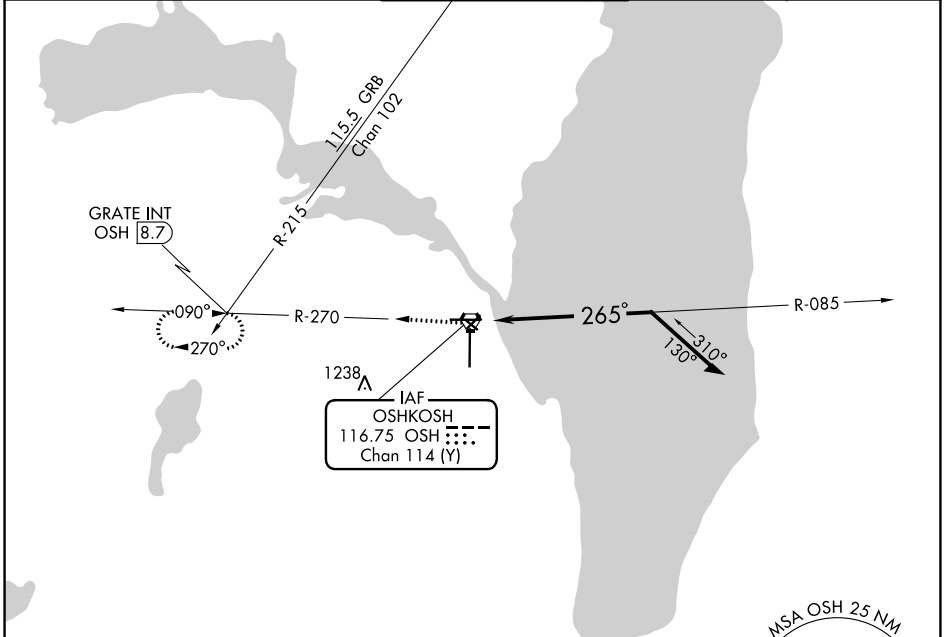
# VOR RWY 27

WITTMAN RGNL (OSH)

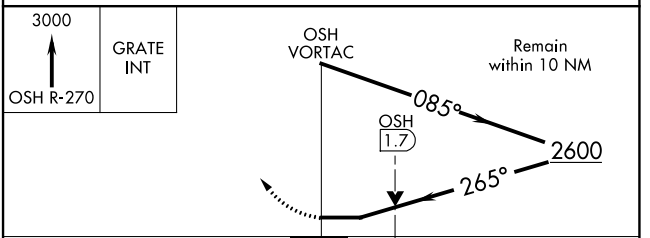
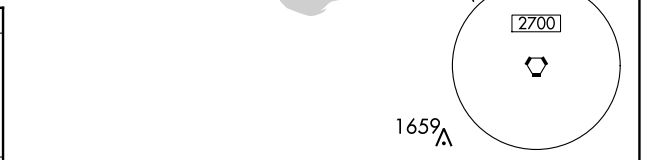
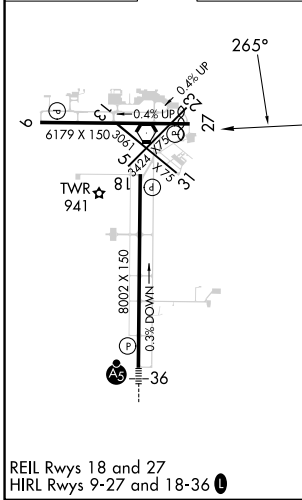
**⚠** Circling to Rwy 5, 23, and 31 NA at night. When local altimeter setting not received, use Fond Du Lac altimeter setting and increase all MDA 40 feet; increase S-27 Cats C and D visibility ¼ mile and Circling Cat C visibility ½ mile, and Cat D ¼ mile. VDP NA with Fond Du Lac altimeter setting. Helicopter visibility reduction below ¾ SM NA.

**⚠** MISSED APPROACH: Climb to 3000 on OSH VORTAC R-270 to GRATE INT/OSH 8.7 DME and hold.

ATIS <b>125.9</b>	MILWAUKEE APP CON <b>127.0 263.075</b>	OSHKOSH TOWER ★ <b>118.5 (CTAF) 290.9</b>	GND CON <b>132.3</b>	UNICOM <b>122.95</b>
----------------------	---	--	-------------------------	-------------------------



ELEV <b>808</b>	<b>D</b>	TDZE <b>786</b>
-----------------	----------	-----------------



CATEGORY	A	B	C	D
S-27	1280-1	494 (500-1)	1280-1⅓	494 (500-1⅓)
<b>C</b> CIRCLING	1280-1 472 (500-1)	1300-1 492 (500-1)	1360-1½ 552 (600-1½)	1440-2 632 (700-2)

EC-3, 31 OCT 2024 to 28 NOV 2024

EC-3, 31 OCT 2024 to 28 NOV 2024