

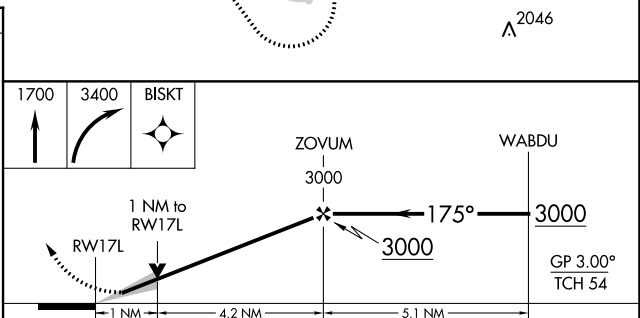
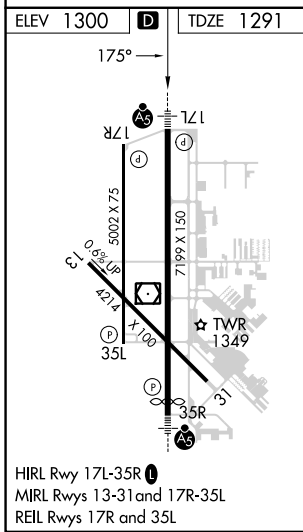
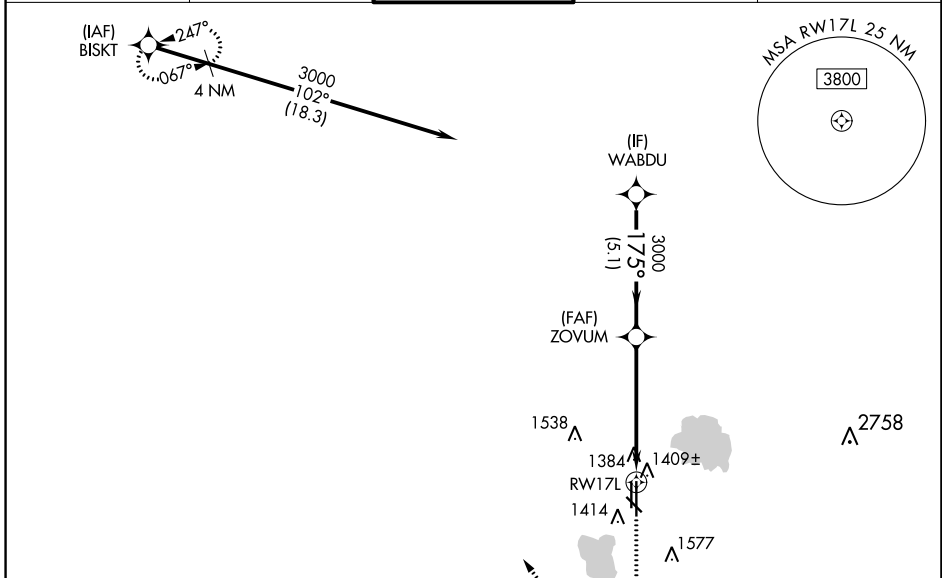
WAAS CH 72737 W17A	APP CRS 175°	Rwy Idg TDZE Apt Elev	6844 1291 1300
--	------------------------	-----------------------------	---

RNAV (GPS) RWY 17L

WILEY POST (PWA)

RNP APCH-GPS.		MALSR	MISSED APPROACH: Climb to 1700 then climbing right turn to 3400 direct BISKT and hold.
<p>▼ For uncompensated Baro-VNAV systems, LNAV/VNAV NA below -13°C or above 54°C. For inop ALS, increase LNAV/VNAV all Cats visibility to ¾ SM and LNAV Cat C/D visibility to 1 SM.</p> <p>▲ ASR</p>			

ATIS 128.725	OKE CITY APP CON 124.6 266.8	WILEY POST TOWER ★ 126.9 (CTAF) 306.9	GND CON 121.7	UNICOM 122.95
------------------------	--	--	-------------------------	-------------------------



CATEGORY	A	B	C	D
LPV DA		1491-½	200 (200-½)	
LNAV/VNAV DA		1590-½	299 (300-½)	
LNAV MDA	1660-½	369 (400-½)	1660-⅝	369 (400-⅝)
C CIRCLING	1780-1	480 (500-1)	1880-1½ 580 (600-1½)	1880-2 580 (600-2)

SC-1, 31 OCT 2024 to 28 NOV 2024

SC-1, 31 OCT 2024 to 28 NOV 2024