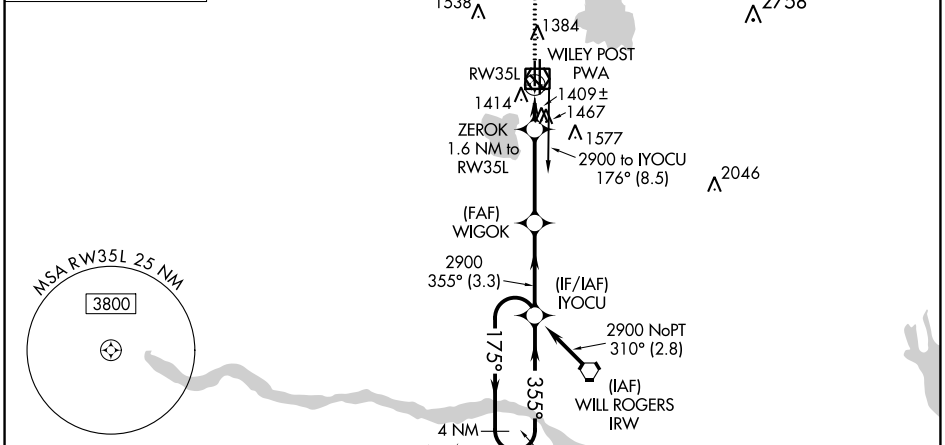
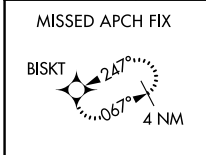


WAAS CH <b>78437</b> <b>W35B</b>	APP CRS <b>355°</b>	Rwy Idg TDZE Apt Elev	<b>5001</b> <b>1277</b> <b>1300</b>
--	------------------------	-----------------------------	---

# RNAV (GPS) RWY 35L

WILEY POST (PWA)

RNP APCH-GPS.		MISSED APPROACH: Climb to 1700 then climbing left turn to 3400 direct BISKT and hold.		
ATIS <b>128.725</b>	OKE CITY APP CON <b>124.6 266.8</b>	WILEY POST TOWER ★ <b>126.9(CTAF) 0 306.9</b>	GND CON <b>121.7</b>	UNICOM <b>122.95</b>



SC-1, 31 OCT 2024 to 28 NOV 2024

SC-1, 31 OCT 2024 to 28 NOV 2024

