

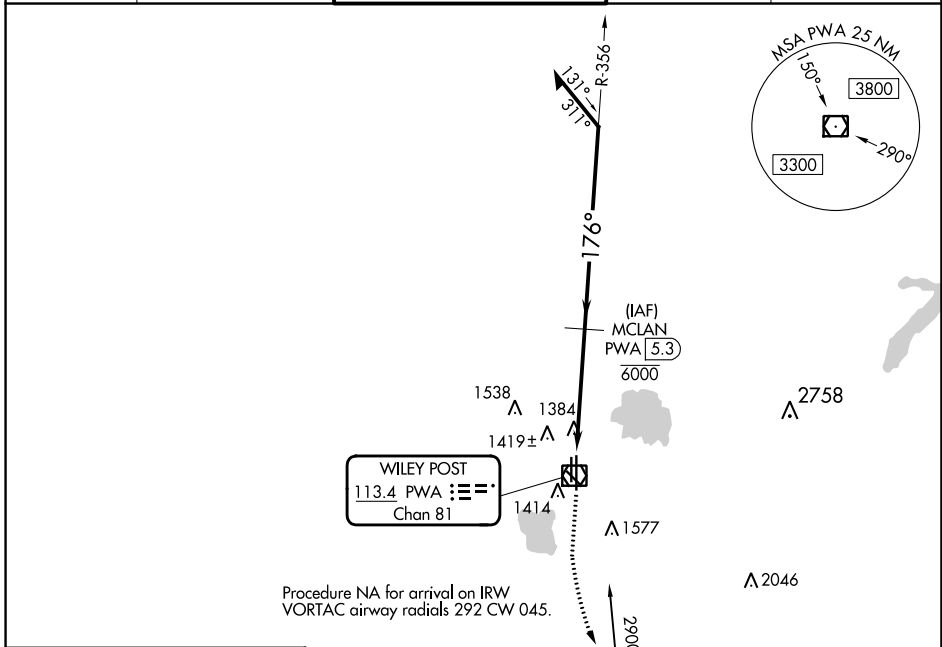
VOR/DME PWA 113.4 Chan 81	APP CRS 176°	Rwy Idg TDZE Apt Elev 6844 1291 1300
---	------------------------	--

VOR RWY 17L

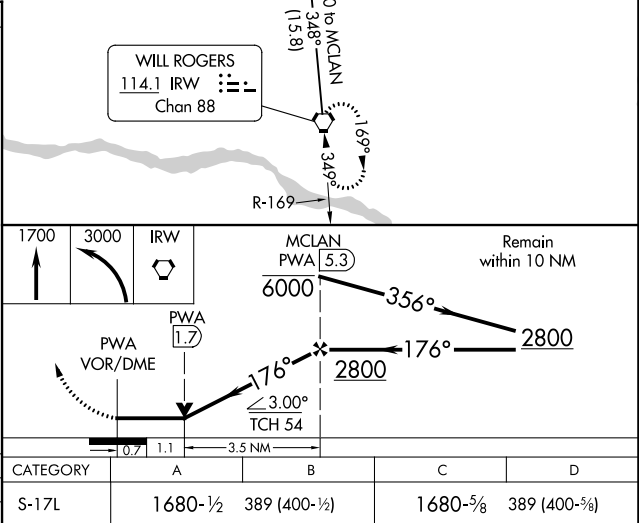
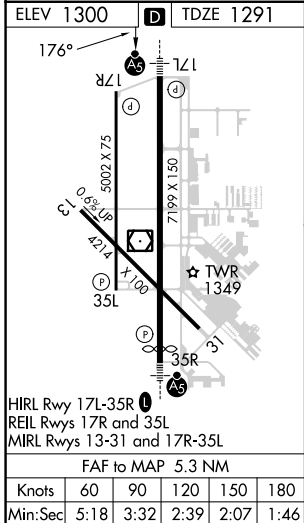
WILEY POST (PWA)

DME required.		MALSR	MISSED APPROACH: Climb to 1700 then climbing left turn to 3000 direct IRW VORTAC and hold.
ASR			

ATIS 128.725	OKE CITY APP CON 124.6 266.8	WILEY POST TOWER★ 126.9(CTAF) 306.9	GND CON 121.7	UNICOM 122.95
------------------------	--	---	-------------------------	-------------------------



Procedure NA for arrival on IRW VORTAC airway radials 292 CW 045.



SC-1, 31 OCT 2024 to 28 NOV 2024

SC-1, 31 OCT 2024 to 28 NOV 2024