

FORTL NINE ARRIVAL

FORT LAUDERDALE, FLORIDA

MIAMI APP CON 133.775 285.6
 FLL D-ATIS 135.0
 FXE ATIS 119.85
 HWO ATIS 135.475
 OPF ATIS 125.9
 PMP ATIS 120.55

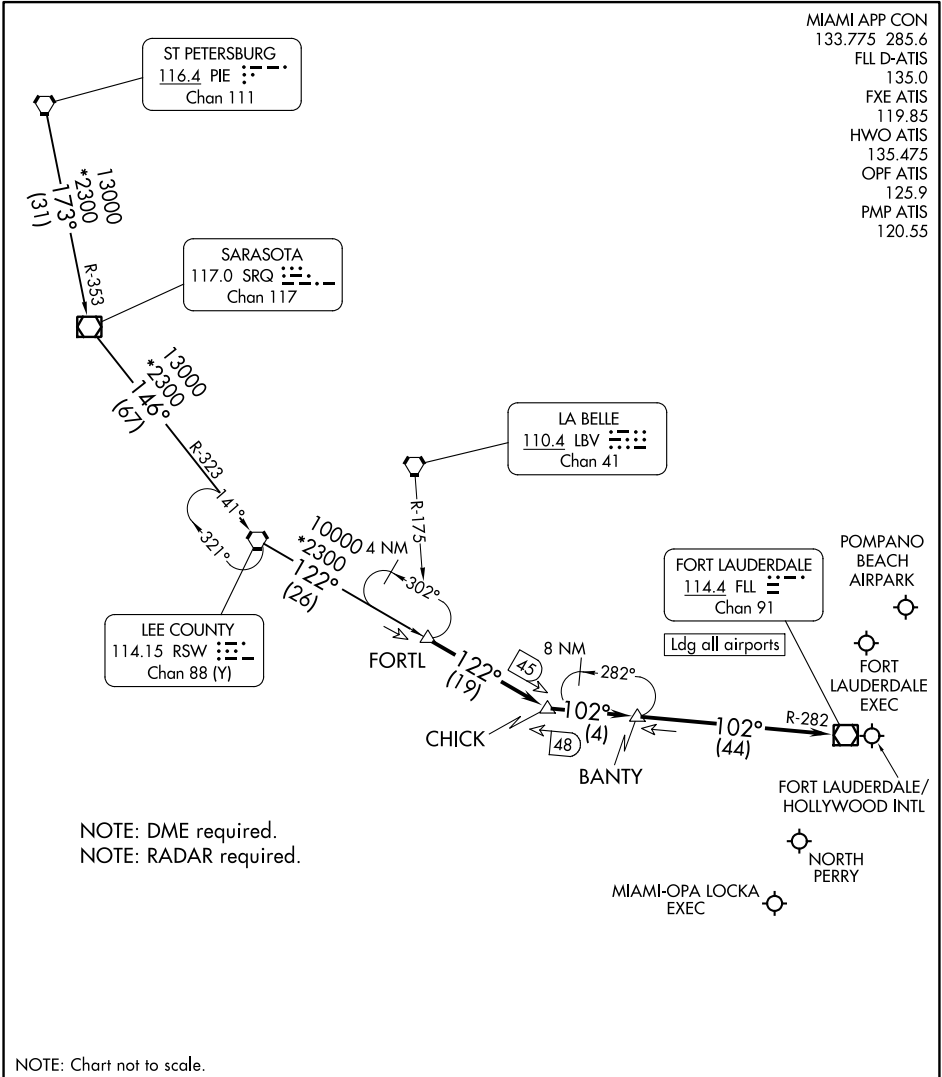
ST PETERSBURG
 116.4 PIE Chan 111

SARASOTA
 117.0 SRQ Chan 117

LA BELLE
 110.4 LBV Chan 41

LEE COUNTY
 114.15 RSW Chan 88 (Y)

FORT LAUDERDALE
 114.4 FLL Chan 91



NOTE: DME required.
 NOTE: RADAR required.

NOTE: Chart not to scale.

ARRIVAL ROUTE DESCRIPTION

ST PETERSBURG TRANSITION (PIE.FORTL9): From over PIE VORTAC on PIE R-173 and SRQ R-353 to SRQ VOR/DME, then on SRQ R-146 and RSW R-323 to RSW VORTAC, then on RSW R-122 to FORTL. Thence. . . .

SARASOTA TRANSITION (SRQ.FORTL9): From over SRQ VOR/DME on SRQ R-146 and RSW R-323 to RSW VORTAC, then on RSW R-122 to FORTL. Thence. . . .

LANDING ALL AIRPORTS: From FORTL on RSW R-122 to CHICK, then on FORT LAUDERDALE VOR/DME (FLL) R-282 to FLL VOR/DME. Expect RADAR vectors to final approach course.

FORTL NINE ARRIVAL

FORT LAUDERDALE, FLORIDA

SE-3, 31 OCT 2024 to 28 NOV 2024

SE-3, 31 OCT 2024 to 28 NOV 2024