


LOC I-FTY 109.1	APP CRS 085°	Rwy Idg TDZE Apt Elev	5797 808 841
---------------------------	------------------------	-----------------------------	---

ILS or LOC RWY 8

FULTON COUNTY EXEC/CHARLIE BROWN FLD (F'TY)

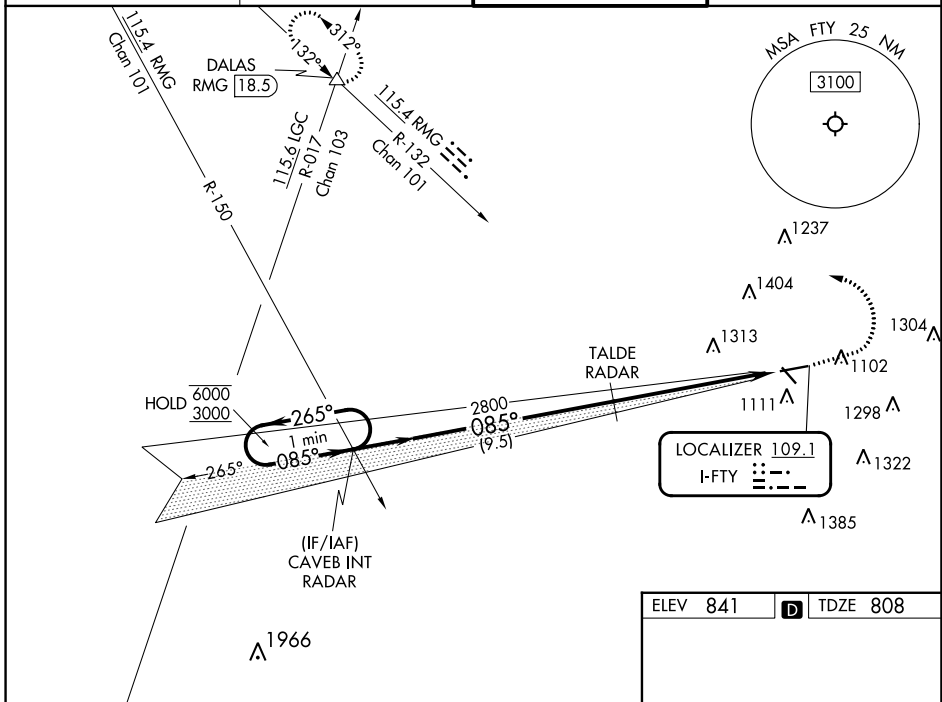
RADAR required to define TALDE.
RADAR required for procedure entry.

⚠ Circling Rwy 14, 32 NA at night. Rwy 8 helicopter visibility reduction below 3/4 SM NA.
⚠ For inop ALS, increase S-LOC 8 Cat A visibility to 1 SM, Cat C/D visibility to 2 1/2 SM.
Ridge with trees to 1299' MSL between FAF and runway threshold may be obscured by clouds even with airfield ceiling at or above procedure minimums.

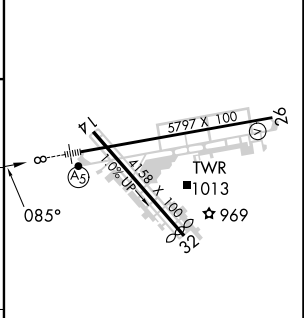
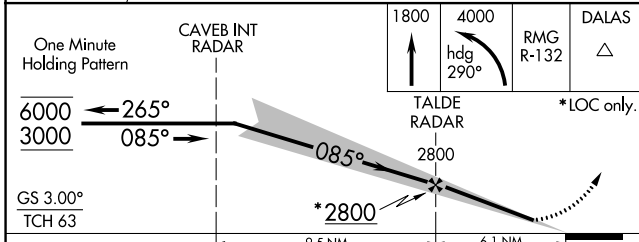
MALSR 

MISSED APPROACH: Climb to 1800 then climbing left turn to 4000 on heading 290° and RMG R-132 to DALAS INT/ RMG VORTAC 18.5 DME and hold.

ATIS 120.175	ATLANTA APP CON 121.0 268.7	FULTON COUNTY TOWER 118.45 257.8	GND CON 121.7 348.6
------------------------	---------------------------------------	--	-------------------------------



ELEV 841	D TDZE 808
----------	-------------------



CATEGORY	A	B	C	D
S-ILS 8	1058-1/2 250 (300-1/2)			
S-LOC 8	1640-3/4	832 (800-3/4)	1640-17/8	832 (800-17/8)
C CIRCLING	1640-1 799 (800-1)	1640-1 1/4 799 (800-1 1/4)	1740-2 3/4 899 (900-2 3/4)	1740-3 899 (900-3)
HIRL Rwy 8-26 REIL Rws 14, 26				
FAF to MAP 6.1 NM				
Knots 60 90 120 150 180				
Min:Sec 6:06 4:04 3:03 2:26 2:02				

ILS or LOC RWY 8

SE-4, 31 OCT 2024 to 28 NOV 2024

SE-4, 31 OCT 2024 to 28 NOV 2024