

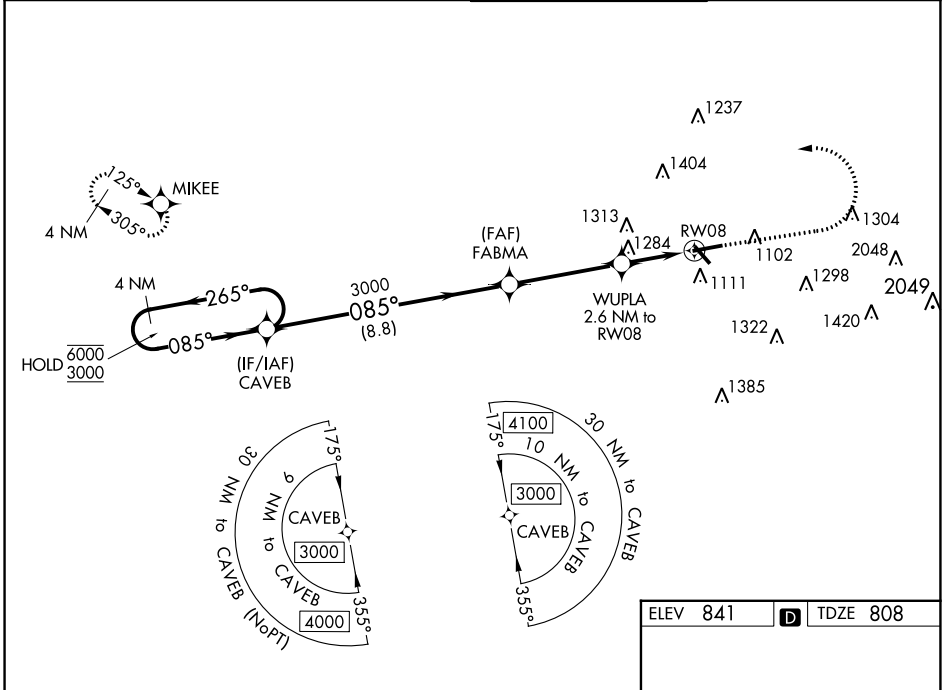
WAAS CH 65804 W08A	APP CRS 085°	Rwy ldg TDZE Apt Elev	5797 808 841
--	------------------------	-----------------------------	---

RNAV (GPS) Y RWY 8

FULTON COUNTY EXEC/CHARLIE BROWN FLD (F'TY)

RNP APCH.	MALSRS 	MISSED APPROACH: Climb to 1600 then climbing left turn to 3000 direct MIKEE and hold.
<p>▼ Circling Rwy 14, 32 NA at night. Rwy 8 helicopter visibility reduction below $\frac{3}{4}$ SM NA. ▲ For uncompensated Baro-VNAV systems, LNAV/VNAV NA below -11°C or above 54°C. For inop ALS, increase LNAV/VNAV all Cats visibility to $2\frac{1}{2}$ SM and LNAV Cat C/D to 2 SM. Ridge with trees to 1299' MSL between FAF and runway threshold may be obscured by clouds even with airfield ceiling at or above procedure minimums.</p>		

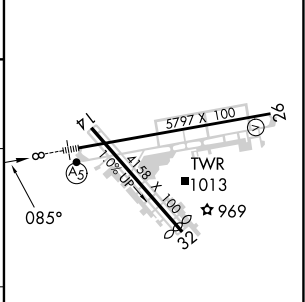
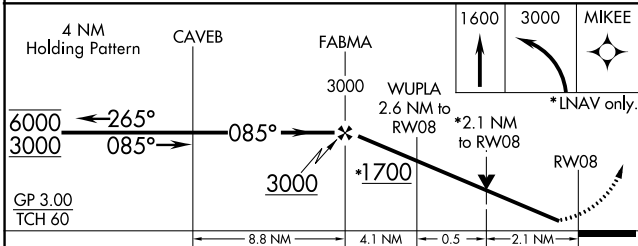
ATIS 120.175	ATLANTA APP CON 121.0 268.7	FULTON COUNTY TOWER 118.45 257.8	GND CON 121.7 348.6
------------------------	---------------------------------------	--	-------------------------------



SE-4, 31 OCT 2024 to 28 NOV 2024

SE-4, 31 OCT 2024 to 28 NOV 2024

ELEV 841	D TDZE 808
----------	-------------------



GP 3.00 TCH 60	<p>4 NM Holding Pattern</p> <p>CAVEB FABMA WUPLA RWY 8 MIKEE</p> <p>6000 ← 265° → 3000 085° → 3000</p> <p>3000 +1700</p> <p>8.8 NM 4.1 NM 0.5 2.1 NM</p>			
CATEGORY	A	B	C	D
LPV DA		1058- $\frac{1}{2}$	250 (300- $\frac{1}{2}$)	
LNAV/VNAV DA		1637-1 $\frac{7}{8}$	829 (800-1 $\frac{7}{8}$)	
LNAV MDA	1540- $\frac{1}{2}$	732 (700- $\frac{1}{2}$)	1540-1 $\frac{5}{8}$	732 (700-1 $\frac{5}{8}$)
C CIRCLING	1540-1	699 (700-1)	1740-2 $\frac{3}{4}$ 899 (900-2 $\frac{3}{4}$)	1740-3 899 (900-3)

HIRL Rwy 8-26 REIL Rws 14, 26
