

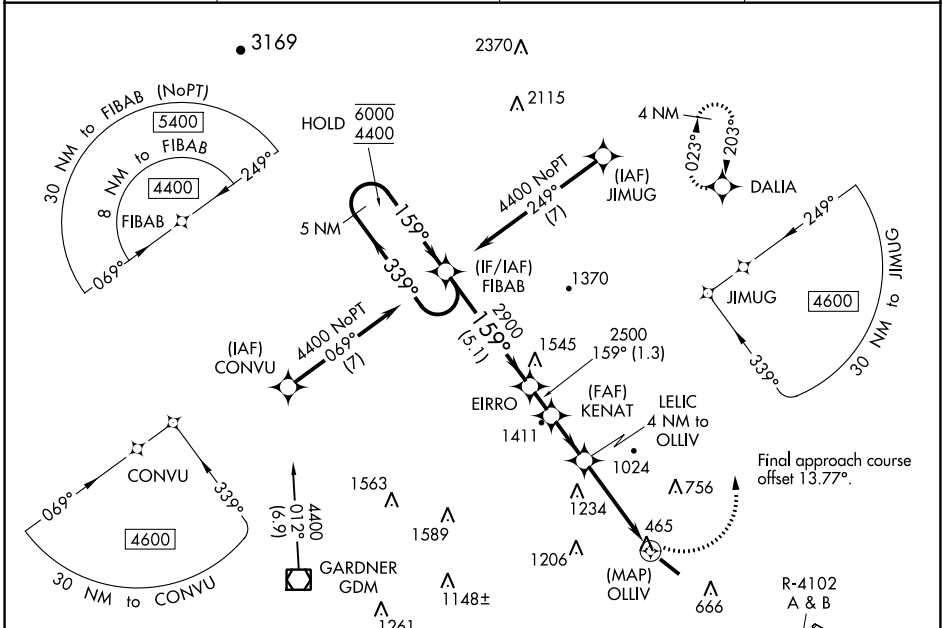
APP CRS	Rwy Idg	4538
159°	TDZE	344
	Apt Elev	345

RNAV (GPS) RWY 14

FITCHBURG MUNI (FIT)

RNP APCH.	MISSED APPROACH: Climbing left turn to 3500 direct DALIA and hold.
<p>▽ Rwy 14 helicopter visibility reduction below ¾ SM NA. ▲ Circling NA southwest of Rwy 14-32 at night. ❄️ -22°C</p>	

ASOS 135.175	BOSTON APP CON 124.4 279.6	UNICOM 122.7 (CTAF)	123.0 ☼
---------------------	-----------------------------------	----------------------------	----------------

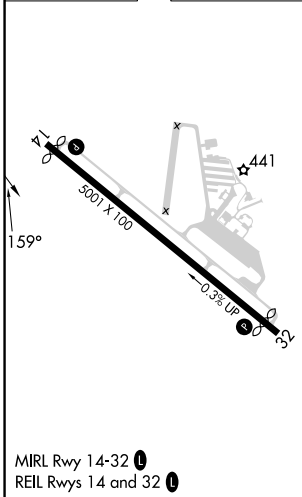


NE-1, 31 OCT 2024 to 28 NOV 2024

NE-1, 31 OCT 2024 to 28 NOV 2024

ELEV 345	D	TDZE 344
-----------------	----------	-----------------

Procedure NA for arrival on GDM VOR/DME airway radials 339 CW 042.



Visual Segment - Obstacles.	3500	DALIA		
<p>5 NM Holding Pattern</p> <p>6000 ← 339°</p> <p>4400 159° →</p> <p>2900</p> <p>2500</p> <p>1860</p> <p>5.1 NM 1.3 NM 2 NM 1.3 2.7 0.5</p>				
CATEGORY	A	B	C	D
LNAV MDA	1420-1¼ 1076 (1100-1¼)	1420-1½ 1076 (1100-1½)	1420-3 1076 (1100-3)	NA
C CIRCLING	1420-1¼ 1075 (1100-1¼)	1420-1½ 1075 (1100-1½)	1520-3 1175 (1200-3)	NA