

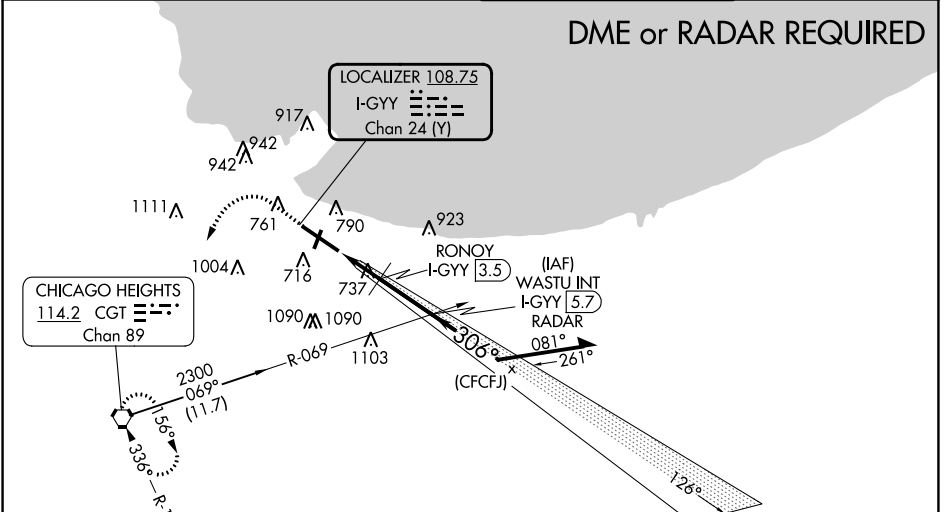
LOC I-GYY <b>108.75</b>	APP CRS <b>306°</b>	Rwy Idg TDZE Apt Elev	<b>7959</b> <b>591</b> <b>597</b>
Chan <b>24 (Y)</b>			

# COPTER ILS or LOC RWY 30

GARY/CHICAGO INTL (GYY)

<p>When local altimeter setting not received, use Chicago Midway Intl altimeter setting and increase all DA 46 feet and all MDA 60 feet. VDP NA with Chicago Midway Intl altimeter setting.</p>	<p>MALS</p>	<p>MISSED APPROACH: Climb to 1500 then climbing left turn to 2300 direct CGT VORTAC and hold.</p>
---	-------------	---

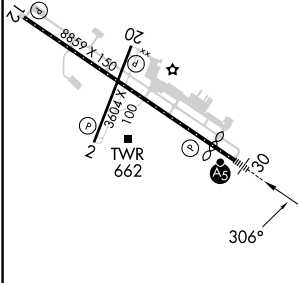
ATIS <b>134.575</b>	CHICAGO APP CON <b>133.1 285.6</b>	GARY TOWER * <b>125.6 (CTAF) 0</b>	GND CON <b>121.9</b>
------------------------	---------------------------------------	---------------------------------------	-------------------------



ELEV 597	D	TDZE 591
----------	---	----------

**MSA CGT 25 NM**  
3400  
2800

**ALTERNATE MISSED APCH FIX**  
PEOTONE  
EON  
113.2  
Chan 79



1500 2300 CGT

WASTU INT I-GYY 5.7 RADAR

RONOY I-GYY 3.5

\*I-GYY 2.6

\*1240#

2000 2300

126° 306°

GS 3.00° HCH 57

Remain within 5 NM

REIL Rwy 2, 12 and 20

HIRL Rwy 12-30

MIRL Rwy 2-20

FAF to MAP 4.3 NM

Knots	45	60	75	90	105
Min:Sec	5:44	4:18	3:26	2:52	2:27

CATEGORY	COPTER
S-ILS 30	791-¼ 200 (200-¼)
S-LOC 30	1240-¼ 649 (700-¼)
RONOY FIX MINIMUMS	
S-LOC 30	1000-¼ 409 (500-¼)

EC-2, 31 OCT 2024 to 28 NOV 2024

EC-2, 31 OCT 2024 to 28 NOV 2024