

WAAS CH 69338 W02A	APP CRS 023°	Rwy Idg TDZE Apt Elev	3604 591 597
----------------------------------------	------------------------	-----------------------------	-----------------------------------------

RNAV (GPS) RWY 2

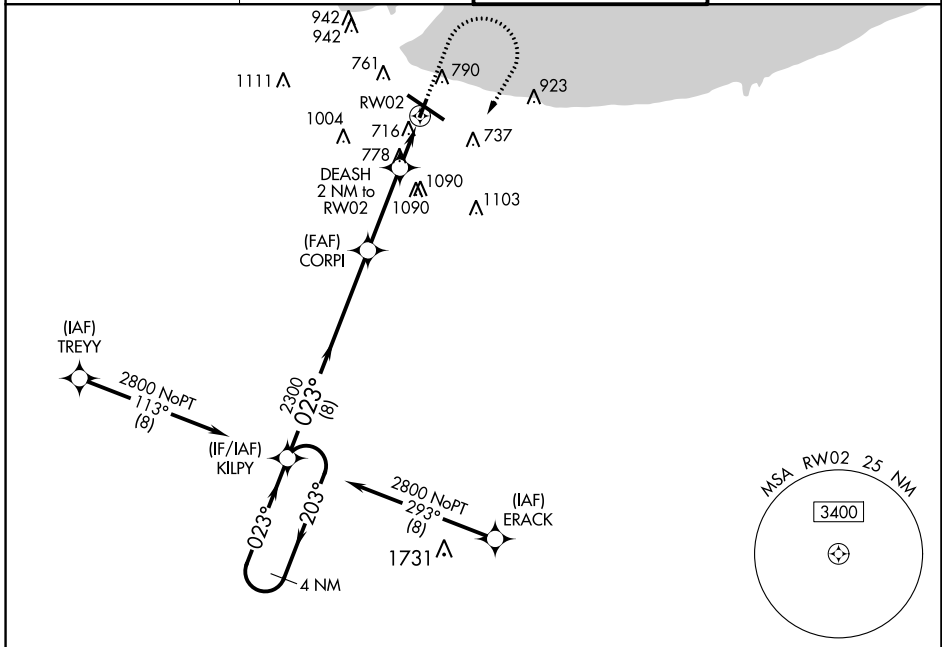
GARY/CHICAGO INTL (GYY)

RNP APCH - GPS

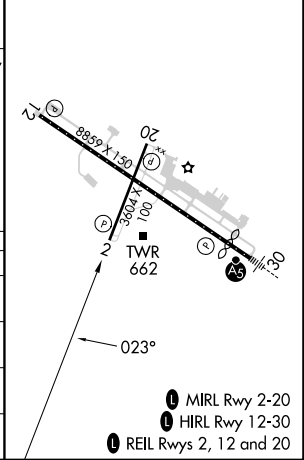
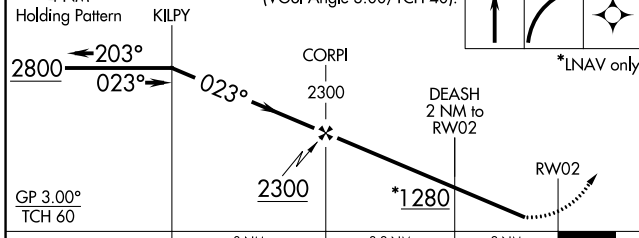
▼ For uncompensated Baro-VNAV systems, LNAV/VNAV NA below -16°C or above 54°C.
 ⚠ Rwy 2 helicopter visibility reduction below 3/4 SM NA. When local altimeter setting not received, use Chicago Midway Intl altimeter setting; increase LPV DA to 947 feet and visibility 1/8 SM, LNAV/VNAV DA to 1135 feet and visibility 1/4 SM; increase all MDAs 60 feet and Circling Cls C and D visibility 1/4 SM. Baro-VNAV NA when using Chicago Midway Intl altimeter setting.

MISSED APPROACH:
 Climb to 2000 then climbing right turn to 2800 direct KILPY and hold.

ATIS 134.575	CHICAGO APP CON 133.1 285.6	GARY TOWER ★ 125.6 (CTAF) 0	GND CON 121.9
------------------------	---------------------------------------	---------------------------------------	-------------------------



4 NM Holding Pattern KILPY	VGSI and RNAV glidepath not coincident (VGSI Angle 3.00/TCH 40).	2000	2800	KILPY	ELEV 597	D TDZE 591
----------------------------	------------------------------------------------------------------	------	------	-------	----------	------------



CATEGORY	A	B	C	D
LPV DA	901-7/8		310 (400-7/8)	
LNAV/VNAV DA	1089-1 3/8		498 (500-1 3/8)	
LNAV MDA	1040-1 449 (500-1)		1040-1 3/8 449 (500-1 3/8)	
CIRCLING	1140-1 543 (600-1)	1180-1 583 (600-1)	1400-2 1/4 803 (900-2 1/4)	1420-2 3/4 823 (900-2 3/4)

EC-2, 31 OCT 2024 to 28 NOV 2024

EC-2, 31 OCT 2024 to 28 NOV 2024