

KOKO HEAD TWO DEPARTURE (CKH2.CKH)

[USA]

WHEELER AAF (PHHI)

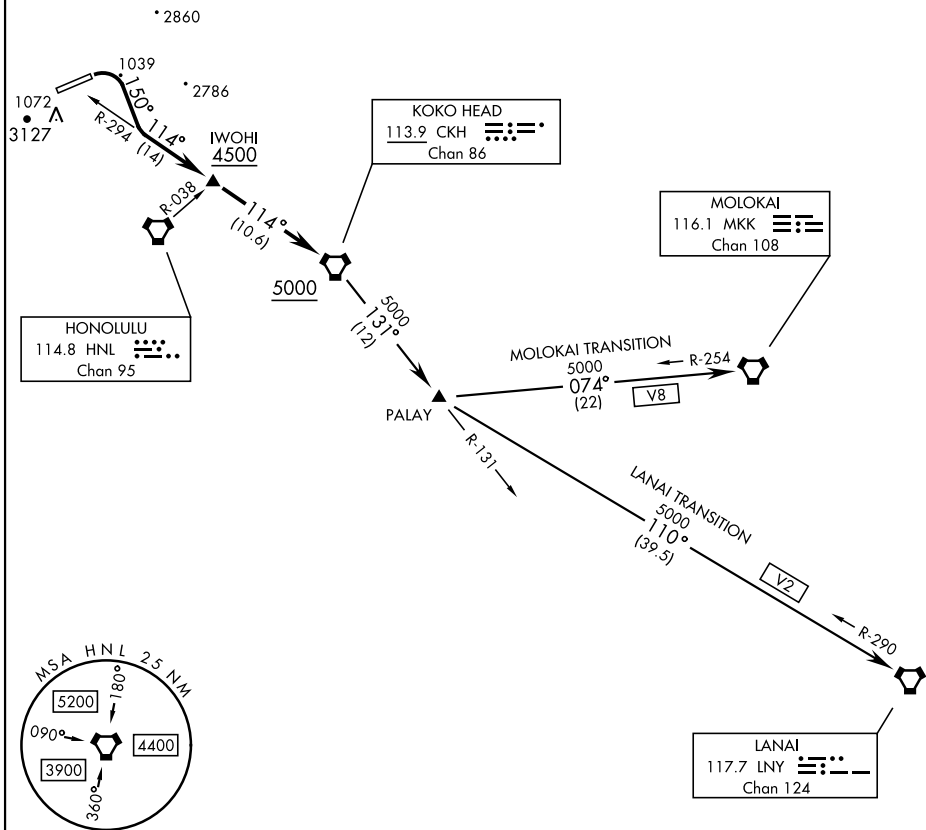
WAHIAWA, OAHU I, HAWAII

HCF APP
124.8 317.6 (E)
118.3 269.0 (W)

TOP ALTITUDE
5000

Rwy	Knots	60	120	180	240	300	360
*06 (C)	V/V(fpm)	365	730	1095	1460	1825	2190
†06 (B)	V/V(fpm)	302	604	906	1208	1510	1812

- * Minimum † ATC Climb Rate
- (C) to 3600
- (B) to IWOHI to 4500



PAC, 31 OCT 2024 to 26 DEC 2024

PAC, 31 OCT 2024 to 26 DEC 2024

DEPARTURE ROUTE DESCRIPTION

TAKEOFF RWY 06: Climbing right turn to heading 150° to intercept CKH VORTAC R-294 to cross IWOHI at or above 4500, then on CKH R-294 to cross CKH at or above 5000, thence...

LANAI TRANSITION (KOKOH2.LNY): ...from over CKH on R-131 to PALAY then on LNY VORTAC R-290 to LNY.

MOLOKAI TRANSITION (KOKOH2.MKK): ...from over CKH on R-131 to PALAY then on MKK VORTAC R-254 to MKK.

KOKO HEAD TWO DEPARTURE (CKH2.CKH)

31OCT24

WAHIAWA, OAHU I, HAWAII

WHEELER AAF (PHHI)