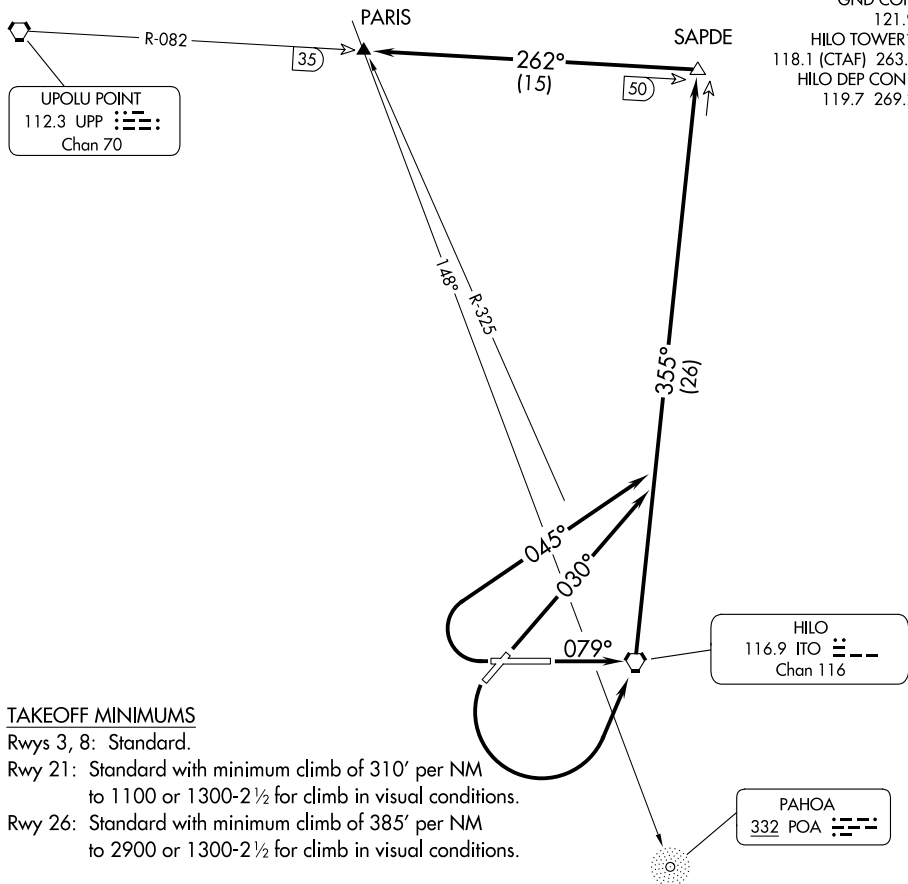


(PARIS4.PARIS) 24025

PARIS FOUR DEPARTURE (OBSTACLE)

AL-756 (FAA)

HILO INTL (ITO)(PHTO)
HILO, HAWAII



TAKEOFF MINIMUMS

Rwys 3, 8: Standard.

Rwy 21: Standard with minimum climb of 310' per NM

to 1100 or 1300-2½ for climb in visual conditions.

Rwy 26: Standard with minimum climb of 385' per NM

to 2900 or 1300-2½ for climb in visual conditions.

(CONTINUED ON FOLLOWING PAGE)

DEPARTURE ROUTE DESCRIPTION

TAKEOFF RUNWAY 3: Climb heading 030° and ITO R-355 to SAPDE INT, thence. . . .

TAKEOFF RUNWAY 8: Climb heading 079° to ITO VORTAC and ITO R-355 to SAPDE INT, thence. . . .

TAKEOFF RUNWAY 21: Climbing left turn direct ITO VORTAC and ITO R-355 to SAPDE INT, or climb in visual conditions to cross ITO VORTAC northbound at or above 1200 MSL, then via R-355 to SAPDE INT, thence. . . .

TAKEOFF RUNWAY 26: Climbing right turn via heading 045° and ITO R-355 to SAPDE INT, or climb in visual conditions to cross ITO VORTAC northbound at or above 1200 MSL, then via R-355 to SAPDE INT, thence. . . .

. . . .proceed via UPP R-082 to PARIS INT.

PARIS FOUR DEPARTURE (OBSTACLE)

(PARIS4.PARIS) 11FEB10

HILO, HAWAII
HILO INTL (ITO)(PHTO)

PAC, 31 OCT 2024 to 26 DEC 2024

TAKEOFF OBSTACLE NOTES

- Rwy 3: Numerous trees and WSK beginning 395' from DER, 68' left of centerline, up to 86' AGL/115' MSL.
Numerous trees beginning 325' from DER, 137' right of centerline, up to 66' AGL/95' MSL.
- Rwy 8: Tree 1198' from DER, 480' left of centerline, 37' AGL/70' MSL.
Numerous trees beginning 414' from DER, 328' right of centerline, up to 46' AGL/79' MSL.
- Rwy 21: Numerous trees and poles beginning 1077' from DER, 272' left of centerline, up to 70' AGL/490' MSL.
Numerous trees and poles beginning 236' from DER, 43' right of centerline, up to 83' AGL/362' MSL.
Vehicles on road beginning 234' from DER, 260' left of centerline, 15' AGL/58' MSL.
- Rwy 26: Numerous vehicles beginning 6' from DER, 452' right of centerline, up to 15' AGL/39' MSL.
Numerous trees and light poles beginning 542' from DER, 471' left of centerline, up to 86' AGL/92' MSL.
Numerous trees beginning 1645' from DER, 266' right of centerline, up to 93' AGL/119' MSL.
Windsock 3' from DER, 269' right of centerline, 19' AGL/46' MSL.
RADAR reflector 373' from DER, 346' right of centerline, 10' AGL/37' MSL.

PAC, 31 OCT 2024 to 26 DEC 2024

PAC, 31 OCT 2024 to 26 DEC 2024