

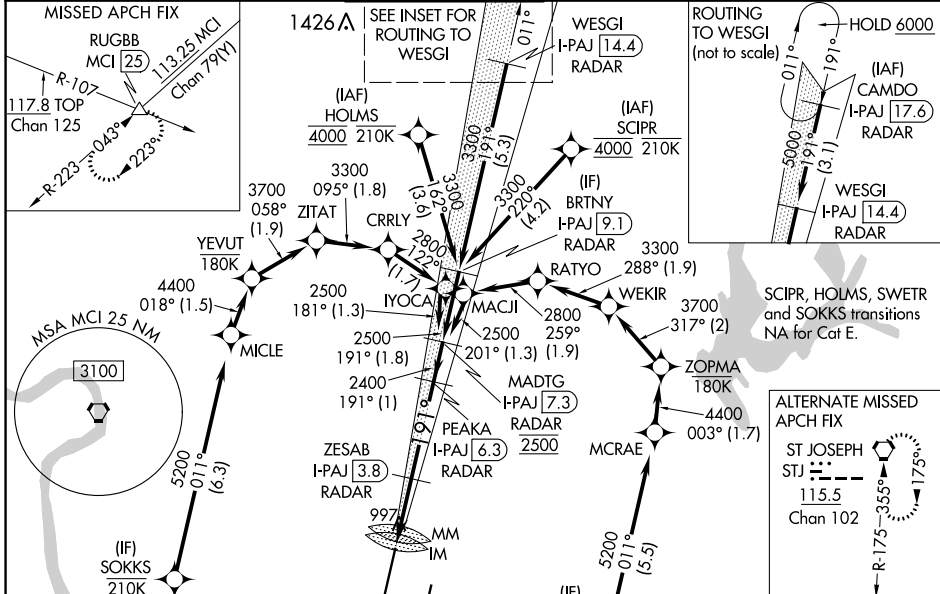
LOC/DME I-PAJ 109.1 Chan 28	APP CRS 191°	Rwy Idg 10801 TDZE 991 Apt Elev 1027
--	------------------------	---

ILS or LOC RWY 19R

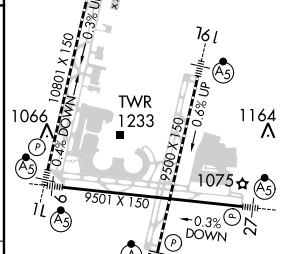
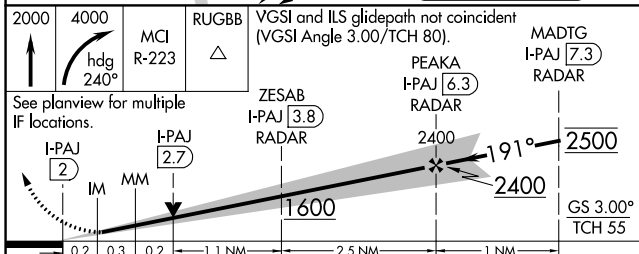
KANSAS CITY INTL (MCI)

RNP APCH - GPS. From SCIPR or HOLMS or SWETR or SOKKS.		ALSF-2 	MISSED APPROACH: Climb to 2000 then climbing right turn to 4000 on heading 240° and MCI VORTAC R-223 to RUGBB INT/MCI 25 DME and hold.
DME or RADAR required. RADAR required for procedure entry at CAMDO.			
<p>▼ For inop ALS, increase S-ILS 19R Cat E visibility to RVR 4000 and S-LOC 19R Cat C/D/E to RVR 4500. Simultaneous approach authorized except from SCIPR, HOLMS, SOKKS and SWETR.</p>			

D-ATIS 128.375	KANSAS CITY APP CON 120.95 318.1	INTERNATIONAL TOWER 128.2 254.25	GND CON 121.8	CLNC DEL 135.7	CPDLC
--------------------------	--	--	-------------------------	--------------------------	-------



ELEV 1027	D TDZE 991
-----------	-------------------



CATEGORY	A	B	C	D	E
S-ILS 19R		1191/18	200 (200-1/2)		
S-LOC 19R		1280/24	289 (300-1/2)		
C CIRCLING	1540-1 513 (600-1)	1540-1 1/2 513 (600-1 1/2)	1580-2	553 (600-2)	

HIRL all Rwy's	60	90	120	150	180
TDZ/CL Rwy's 1L, 1R, 19L and 19R	4:18	2:52	2:09	1:43	1:26
FAF to MAP 4.3 NM					

NC-3, 31 OCT 2024 to 28 NOV 2024

NC-3, 31 OCT 2024 to 28 NOV 2024