

ROYAL TWO DEPARTURE

AL-780 (FAA)

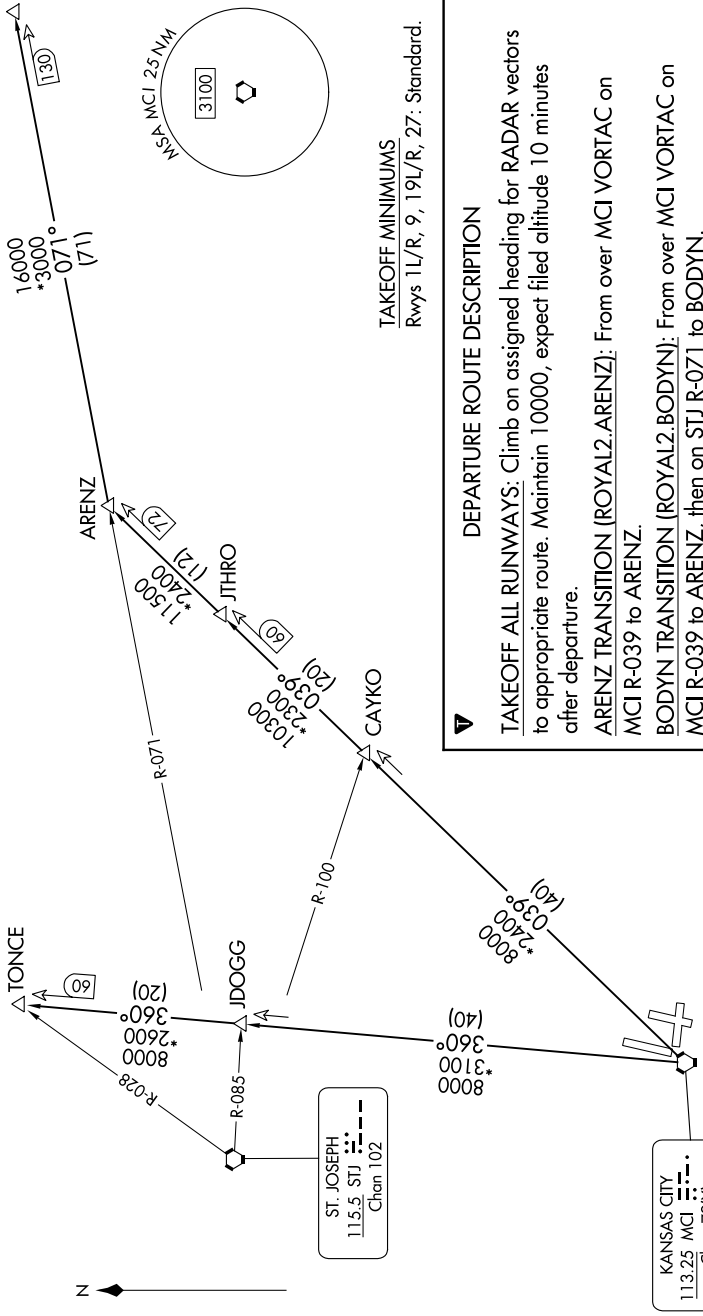
KANSAS CITY INTL (MCI)
KANSAS CITY, MISSOURI

NC-3, 31 OCT 2024 to 28 NOV 2024

TOP ALTITUDE:
10000

RADAR and DME required.

KANSAS CITY DEP CON
123.95 318.1 (ARENZ/BODYN TRANSITION)
124.7 284.7 (TONCE TRANSITION)
D-ATIS
128.375
CLNC DEL
135.7



TAKEOFF MINIMUMS
Rwys 1L/R, 9, 19L/R, 27: Standard.

DEPARTURE ROUTE DESCRIPTION

TAKEOFF ALL RUNWAYS: Climb on assigned heading for RADAR vectors to appropriate route. Maintain 10000, expect filed altitude 10 minutes after departure.

ARENZ TRANSITION (ROYAL2.ARENZ): From over MCI VORTAC on MCI R-039 to ARENZ.

BODYN TRANSITION (ROYAL2.BODYN): From over MCI VORTAC on MCI R-039 to ARENZ, then on STJ R-071 to BODYN.

TONCE TRANSITION (ROYAL2.TONCE): From over MCI VORTAC on MCI R-360 to TONCE.

NOTE: Chart not to scale.

NC-3, 31 OCT 2024 to 28 NOV 2024

ROYAL TWO DEPARTURE