

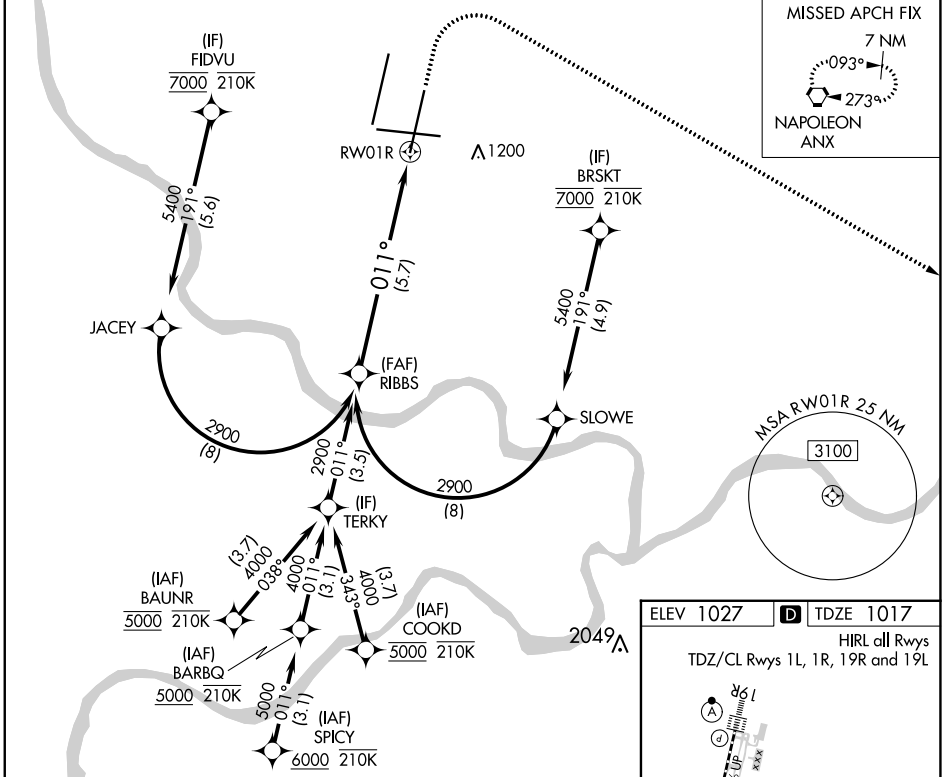
APP CRS	Rwy Idg	<b>9500</b>
<b>011°</b>	TDZE	<b>1017</b>
	Apt Elev	<b>1027</b>

# RNAV (RNP) Z RWY 1R

KANSAS CITY INTL (MCI)

RNP AR APCH - GPS.		ALSF-2 	MISSED APPROACH: Climb to 1500 then climbing right turn to 4000 direct ANX VORTAC and hold.
<p><b>▼</b> Use of FD or AP required during simultaneous operations. For uncompensated Baro-VNAV systems, procedure NA below -19°C or above 54°C. Simultaneous approach authorized, except for arrivals at FIDVU, BRSKT, BAUNR and COOKD. For inop ALS, increase RNP 0.30 all Cats visibility to RVR 4500.</p>			

D-ATIS <b>128.375</b>	KANSAS CITY APP CON <b>120.95 318.1</b>	INTERNATIONAL TOWER <b>128.2 254.25</b>	GND CON <b>121.8</b>	CLNC DEL <b>135.7</b>	CPDLC
--------------------------	--	--	-------------------------	--------------------------	-------



NC-3, 31 OCT 2024 to 28 NOV 2024

NC-3, 31 OCT 2024 to 28 NOV 2024

RIBBS VGS1 and RNAV glidepath not coincident (VGS1 Angle 3.00/TCH 74).		1500	4000	ANX
GP 3.00° TCH 59		See planview for multiple IF locations.		
		5.7 NM		
CATEGORY	A	B	C	D
RNP 0.30 DA		1280/24	263 (300-1/2)	
<b>AUTHORIZATION REQUIRED</b>				

