

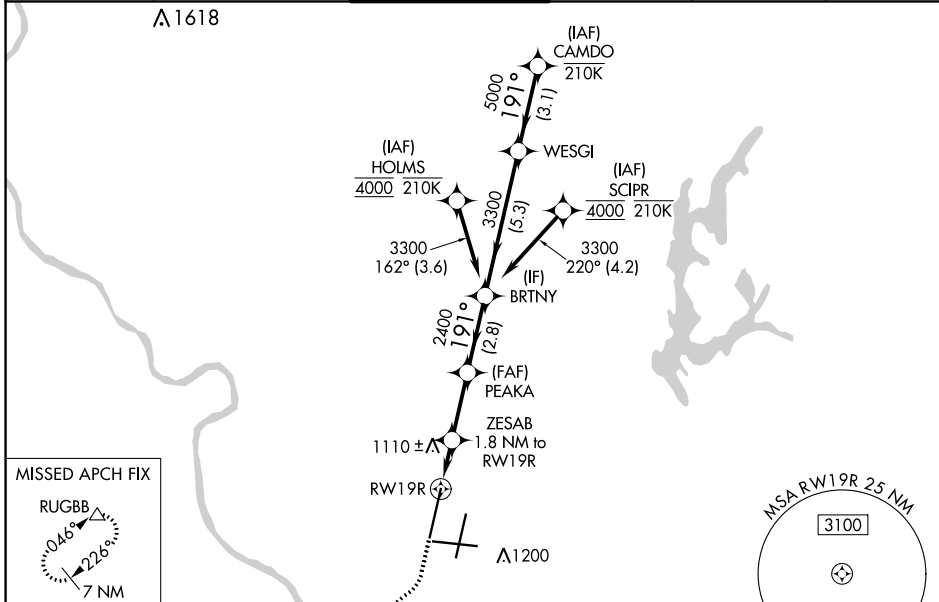
WAAS CH <b>72908</b> <b>W19B</b>	APP CRS <b>191°</b>	Rwy Idg <b>10801</b> TDZE <b>991</b> Apt Elev <b>1027</b>
--	------------------------	---

# RNAV (GPS) Y RWY 19R

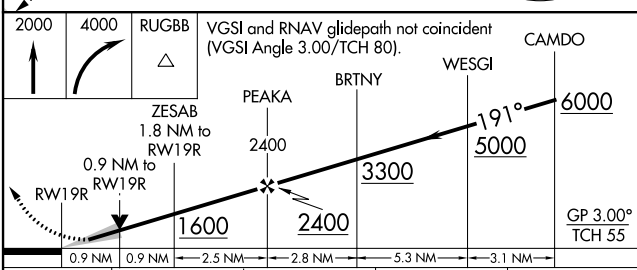
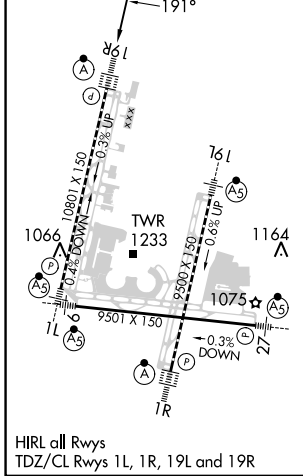
KANSAS CITY INTL (MCI)

RNP APCH - GPS.	ALSF-2 	MISSED APPROACH: Climb to 2000 then climbing right turn to 4000 direct RUGBB and hold.
<p>▼ LNAV procedure NA during simultaneous operations. Use of FD or AP required during simultaneous operations. For uncompensated Baro-VNAV systems, LNAV/VNAV NA below -21°C or above 54°C. For inop ALS, increase LNAV Cats C/D visibility to RVR 5500. Simultaneous approach authorized except from SCRIP and HOLMS.</p>		

D-ATIS <b>128.375</b>	KANSAS CITY APP CON <b>120.95 318.1</b>	INTERNATIONAL TOWER <b>128.2 254.25</b>	GND CON <b>121.8</b>	CLNC DEL <b>135.7</b>	CPDLC
--------------------------	--	--	-------------------------	--------------------------	-------



ELEV 1027	<b>D</b>	TDZE 991
-----------	----------	----------



CATEGORY	A	B	C	D
LPV DA		1191/18	200 (200-½)	
LNAV/VNAV DA		1417/40	426 (400-¾)	
LNAV MDA	1360/24	369 (400-½)	1360/35	369 (400-¾)
<b>C</b> CIRCLING	1540-1	513 (600-1)	1540-1½ 513 (600-1½)	1580-2 553 (600-2)

NC-3, 31 OCT 2024 to 28 NOV 2024

NC-3, 31 OCT 2024 to 28 NOV 2024