

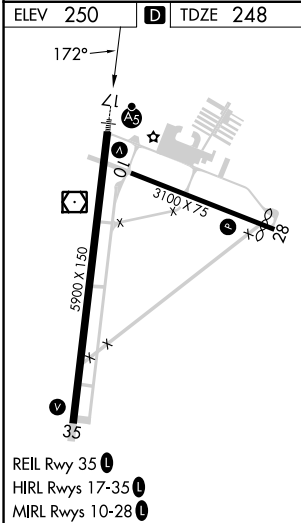
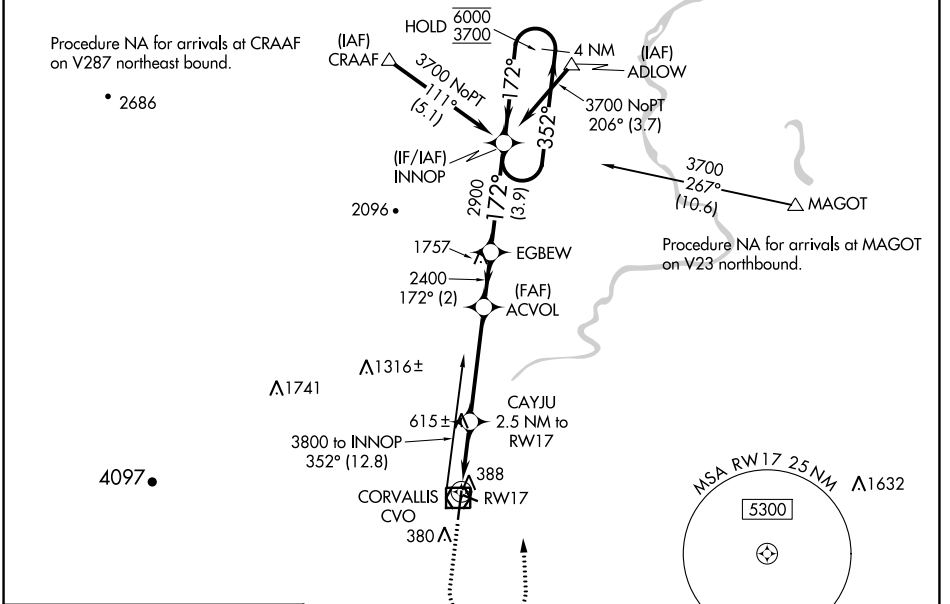
WAAS CH 78311	APP CRS 172°	Rwy Idg TDZE Apt Elev	5900 248 250
-------------------------	------------------------	-----------------------------	---

RNAV (GPS) RWY 17

CORVALLIS MUNI (CVO)

RNP APCH - GPS.	MALSR 	MISSED APPROACH: Climb to 1100 then climbing left turn to 3700 direct INNOP and hold, continue climb-in-hold to 3700.
Circling Rwy 28 NA at night. For uncompensated Baro-VNAV systems, LNAV/VNAV NA below -15°C or above 54°C. When local altimeter setting not received, procedure NA. For inop ALS, increase LNAV Cat C/D visibility to 1/4 SM.		

AWOS-3PT 135.775	CASCADE APP CON * 127.5 348.7	UNICOM 123.075 (CTAF)
----------------------------	---	---------------------------------



1100	3700	INNOP	INNOP		4 NM Holding Pattern
			ACVOL	EGBEW	INNOP
			CAYJU 2.5 NM to RW17	2400	352° → 6000 ← 172° 3700
			1.8 NM to RW17	2900	GP 3.00° TCH 45
			1080	2400	
			1.8 NM	0.7	4.1 NM
			2 NM	3.9 NM	
CATEGORY	A	B	C	D	
LPV DA		448-1/2	200 (200-1/2)		
LNAV/VNAV DA		571-1/2	323 (400-1/2)		
LNAV MDA	880-1/2	632 (700-1/2)	880-1 3/8	632 (700-1 3/8)	
CIRCLING	880-1	630 (700-1)	920-1 3/4	1080-2 3/4	670 (700-1 3/4) 830 (900-2 3/4)

NW-1, 31 OCT 2024 to 28 NOV 2024

NW-1, 31 OCT 2024 to 28 NOV 2024