

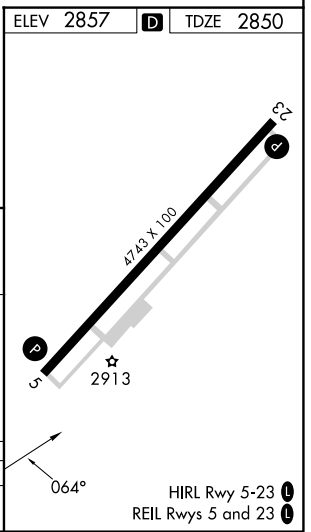
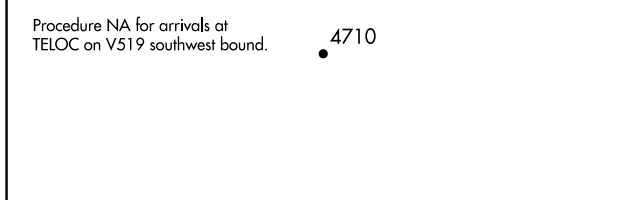
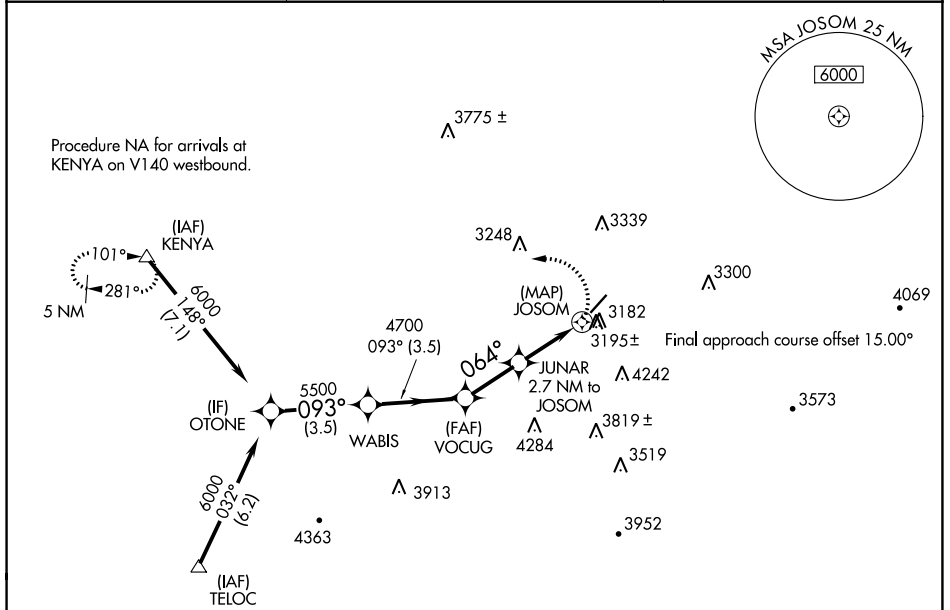
APP CRS <b>064°</b>	Rwy Idg <b>4743</b>
	TDZE <b>2850</b>
	Apt Elev <b>2857</b>

# RNAV (GPS) RWY 5

MERCER COUNTY (BLF)

RNP APCH.	MISSED APPROACH: Climbing left turn to 6000 direct KENYA and hold.
<p>Procedure NA at night. Rwy 5 helicopter visibility reduction below 1 SM NA.</p>	

ASOS <b>132.725</b>	INDIANAPOLIS CENTER <b>126.575 257.85</b>	CTAF <b>122.9</b>
------------------------	--	----------------------



OTONE	VGSIs and descent angles not coincident (VGSIs Angle 3.00/TCH 40).		6000	KENYA
WABIS	VOCUG	JUNAR 2.7 NM to JOSOM	JOSOM	△
3.5 NM	3.5 NM	2.3 NM	2.7 NM	0.5

CATEGORY	A	B	C	D
LNAV MDA	3560-1	710 (800-1)	3560-2	3560-2 1/4
			710 (800-2)	710 (800-2 1/4)

NE-4, 31 OCT 2024 to 28 NOV 2024

NE-4, 31 OCT 2024 to 28 NOV 2024