

|                                 |                        |                             |   |
|---------------------------------|------------------------|-----------------------------|---|
| WAAS<br>CH <b>78207</b><br>W15A | APP CRS<br><b>146°</b> | Rwy Idg<br>TDZE<br>Apt Elev | <b>5006</b><br><b>2193</b><br><b>2193</b> |
|---------------------------------|------------------------|-----------------------------|---|

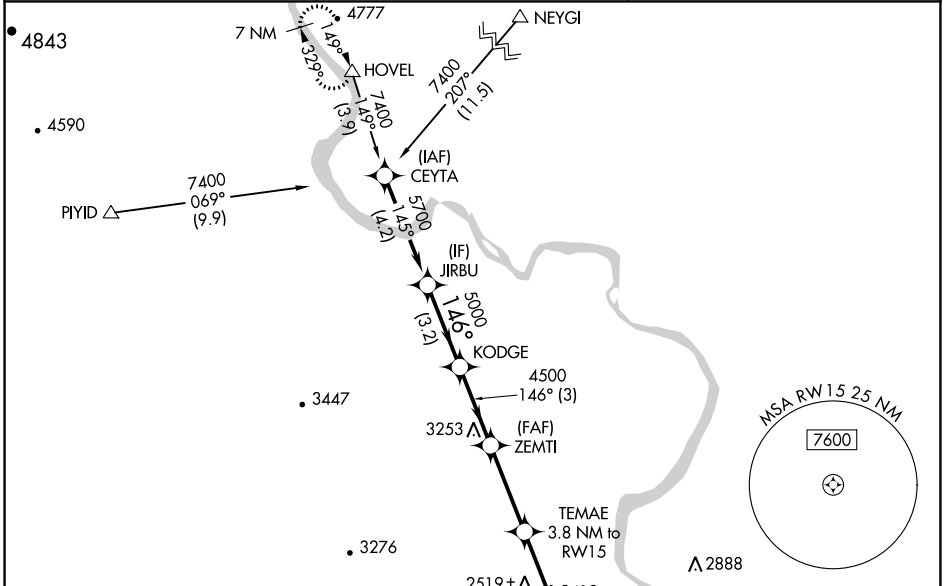
# RNAV (GPS) RWY 15

ONTARIO MUNI (ONO)

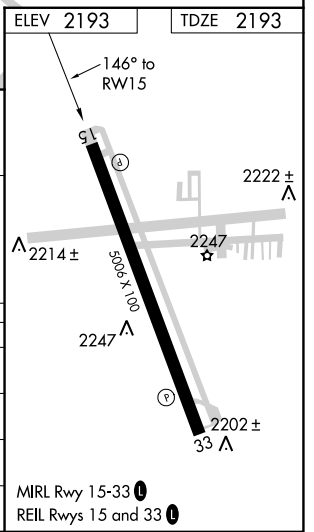
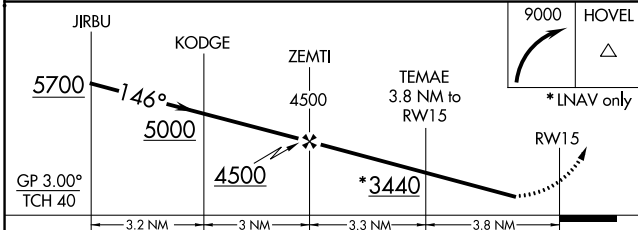
**⚠** Baro-VNAV NA when using Caldwell altimeter setting. For uncompensated Baro-VNAV systems, LNAV/VNAV NA below -18°C (0°F) or above 54°C (130°F). DME/DME RNP-0.3 NA. When local altimeter setting not received, use Caldwell altimeter setting and increase LPV DA to 2867 feet, LNAV/VNAV DA to 2911 feet, and all MDA 100 feet; increase LPV visibility, all Cats by ½ SM, increase LNAV visibility Cats C/D and Circling Cat C by ¼ SM. Rwy 15 helicopter visibility reduction below 1 SM NA. Straight-in Rwy 15 NA at night, Circling Rwy 15 NA at night.

**MISSED APPROACH:** Climbing right turn to 9000 direct HOVEL and hold, continue climb-in-hold to 9000.

|                        |  |                                 |
|------------------------|--|---------------------------------|
| ASOS<br><b>135.275</b> | SALT LAKE CENTER<br><b>128.05 306.95</b> | UNICOM<br><b>122.8 (CTAF) 0</b> |
|------------------------|--|---------------------------------|



|           |           |
|-----------|-----------|
| ELEV 2193 | TDZE 2193 |
|-----------|-----------|



| CATEGORY          | A                    | B                    | C                     | D                    |
|-------------------|----------------------|----------------------|-----------------------|----------------------|
| LPV DA            | 2769-2 576 (600-2)   |                      |                       |                      |
| LNAV/VNAV DA      | 2814-2½ 621 (700-2½) |                      |                       |                      |
| LNAV MDA          | 2780-1 587 (600-1)   | 2780-1¾ 587 (600-1¾) |                       |                      |
| <b>C</b> CIRCLING | 2780-1 587 (600-1)   | 2800-1 607 (700-1)   | 3120-2¾ 927 (1000-2¾) | 3240-3 1047 (1100-3) |

NW-1, 31 OCT 2024 to 28 NOV 2024

NW-1, 31 OCT 2024 to 28 NOV 2024