

WAAS CH 42520 W23A	APP CRS 229°	Rwy Idg TDZE Apt Elev	6333 1663 1663
--	------------------------	-----------------------------	---

RNAV (GPS) RWY 23

ADIRONDACK RGNL (SLK)

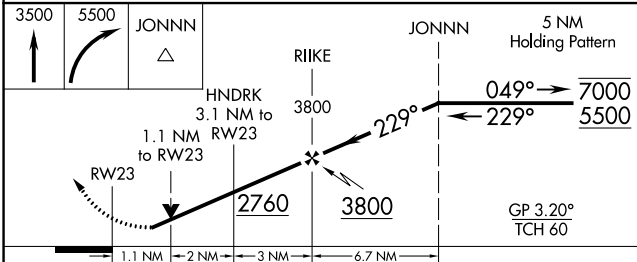
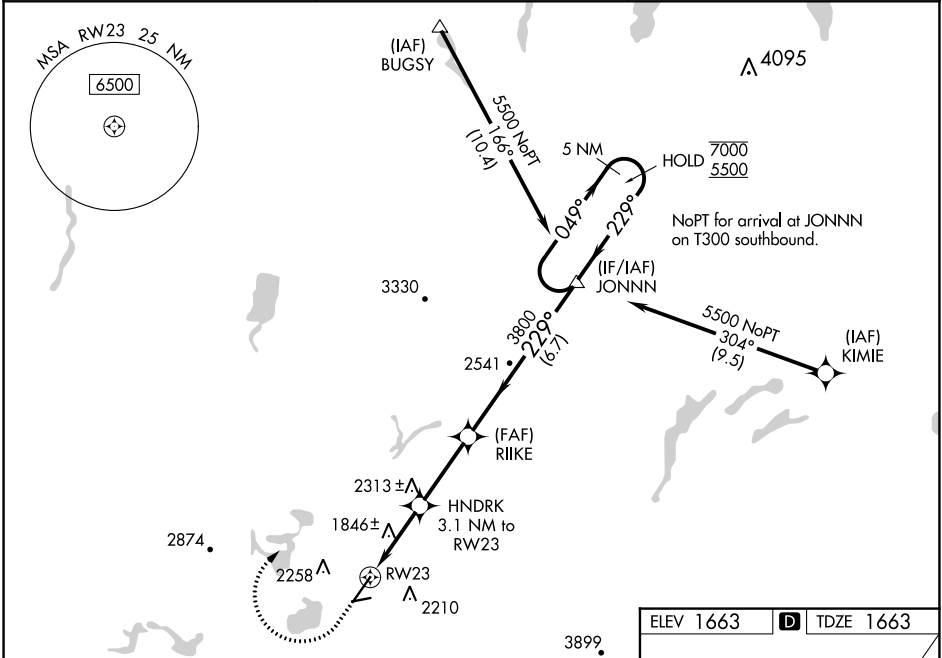
RNP APCH - GPS.

⚠ Rwy 23 helicopter visibility reduction below $\frac{3}{4}$ SM NA. For uncompensated Baro-VNAV systems, LNAV/VNAV NA below -29°C or above 54°C. When local altimeter setting not received, procedure NA. Circling Rwy 5, 9, 27 NA at night. Inop table does not apply to LPV DA. For inop ALS, increase LNAV/VNAV all Cats visibility to $1\frac{3}{8}$ SM; increase LNAV Cat A/B visibility to 1 SM.

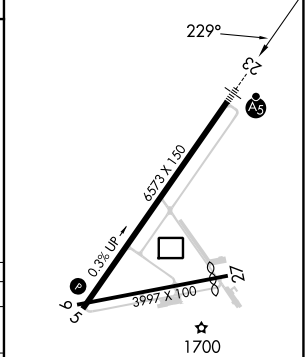


MISSED APPROACH:
Climb to 3500 then climbing right turn to 5500 direct JONNN and hold.

ASOS 124.175	BOSTON CENTER 120.35 342.25	UNICOM 123.0 (CTAF) 0
------------------------	---------------------------------------	---------------------------------



ELEV 1663	D TDZE 1663
-----------	--------------------



CATEGORY	A	B	C	D
LPV DA		1913- $\frac{3}{4}$	250 (300- $\frac{3}{4}$)	
LNAV/VNAV DA		2149-1	486 (500-1)	
LNAV MDA		2100- $\frac{3}{4}$	437 (500- $\frac{3}{4}$)	
C CIRCLING	2500-1 $\frac{1}{4}$ 837 (900-1 $\frac{1}{4}$)	2660-1 $\frac{1}{2}$ 997 (1000-1 $\frac{1}{2}$)	2660-3 997 (1000-3)	2800-3 1137 (1200-3)

HIRL Rwy 5-23 **0**
MIRL Rwy 9-27 **0**

NE-2, 31 OCT 2024 to 28 NOV 2024

NE-2, 31 OCT 2024 to 28 NOV 2024