

| | | | |
|--|------------------------|-----------------------------|---|
| WAAS CH 49125 W22A | APP CRS 215° | Rwy Idg TDZE Apt Elev | 5658 2355 2380 |
|--|------------------------|-----------------------------|---|

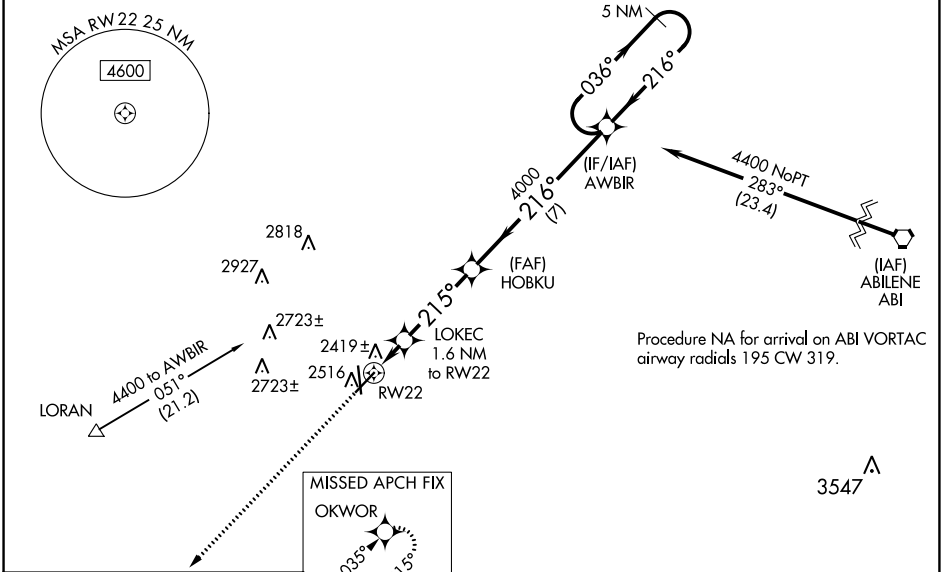
RNAV (GPS) RWY 22

AVENGER FLD (SWW)

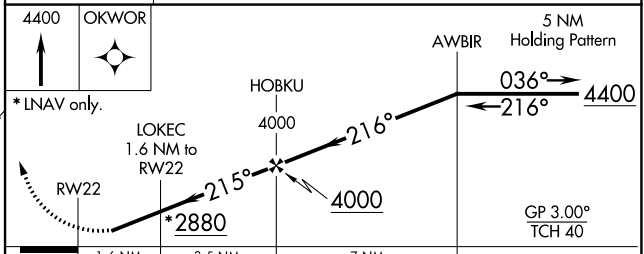
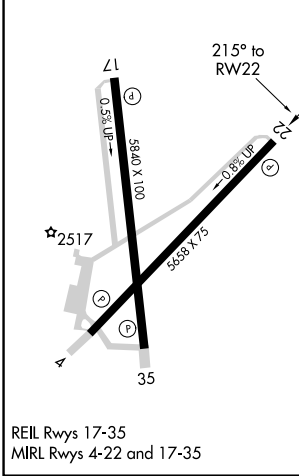
⚠ When VGSi inop, Circling Rwy 17 and 22 NA at night. Baro-VNAV NA when using Snyder altimeter setting. For uncompensated Baro-VNAV systems, LNAV/VNAV NA below -19°C (-2°F) or above 29°C (84°F). When VGSi inop, Straight in/Circling Rwy 22 procedure NA at night. DME/DME RNP-0.3 NA. Visibility reduction by helicopters NA. When local altimeter setting not received, use Snyder altimeter setting and increase LPV and LNAV/VNAV DA to 2677 feet, increase all MDAs 80 feet; increase LPV and LNAV/VNAV visibility all Cats 1/8 SM, LNAV visibility Cats C and D and Circling Cat C and D visibility 1/4 SM.

MISSED APPROACH:
Climb to 4400 direct OKWOR and hold.

| | | |
|--------------------------|---------------------------------------|-------------------------------|
| AWOS-3 119.025 | ABILENE APP CON 127.2 282.3 | UNICOM 122.8 (CTAF) |
|--------------------------|---------------------------------------|-------------------------------|



| | |
|-----------|-----------|
| ELEV 2380 | TDZE 2355 |
|-----------|-----------|



| CATEGORY | A | B | C | D |
|--------------|--------|-------------|-----------------------|-------------------------------|
| LPV DA | | 2605-1 | 250 (300-1) | |
| LNAV/VNAV DA | | 2605-1 | 250 (300-1) | |
| LNAV MDA | | 2680-1 | 325 (300-1) | |
| CIRCLING | 2880-1 | 500 (500-1) | 3080-2 700 (700-2) | 3080-2 1/4 700 (700-2 1/4) |

SC-2, 31 OCT 2024 to 28 NOV 2024

SC-2, 31 OCT 2024 to 28 NOV 2024