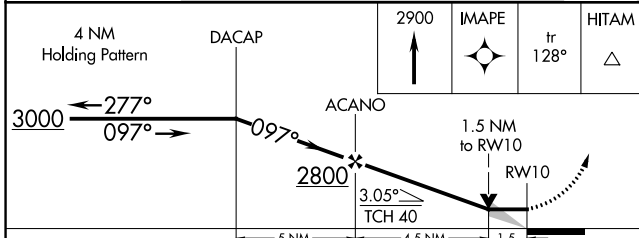
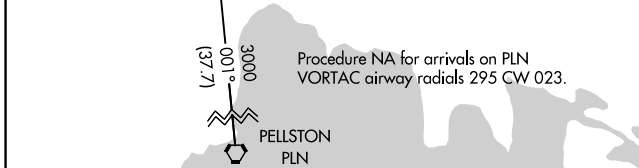
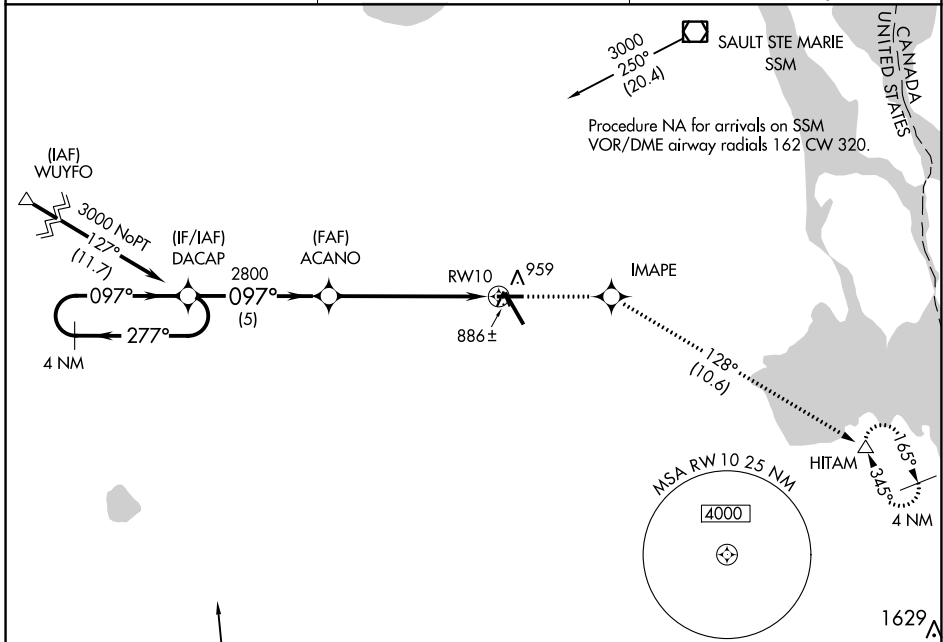


APP CRS	Rwy Idg	5000
097°	TDZE	799
	Apt Elev	799

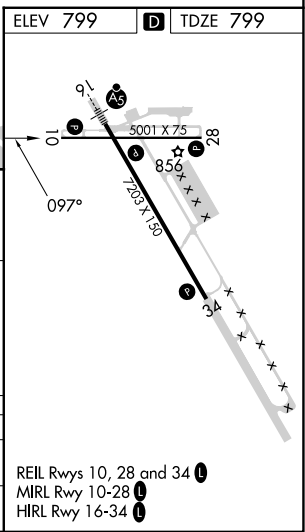
RNAV (GPS) RWY 10

CHIPPEWA COUNTY INTL (CIU)

RNP APCH.		MISSED APPROACH: Climb to 2900 direct IMAPE and track 128° to HITAM and hold.
<p>▼ VDP NA with Sault Ste Marie altimeter setting. When local altimeter setting not received, use Sault Ste Marie Muni/Sanderson Fld altimeter setting; increase all MDA 60 feet, increase LNAV visibility Cat C/D and Circling Cat C ¼ SM.</p>		
AWOS-3PT	TORONTO CENTER	UNICOM
127.575	132.65 344.5	123.0 (CTAF) 0



CATEGORY	A	B	C	D
LNAV MDA	1320-1	521 (600-1)	1320-1½	521 (600-1½)
C CIRCLING	1320-1	521 (600-1)	1320-1½	1360 - 2 561 (600-2)



EC-1, 31 OCT 2024 to 28 NOV 2024

EC-1, 31 OCT 2024 to 28 NOV 2024