

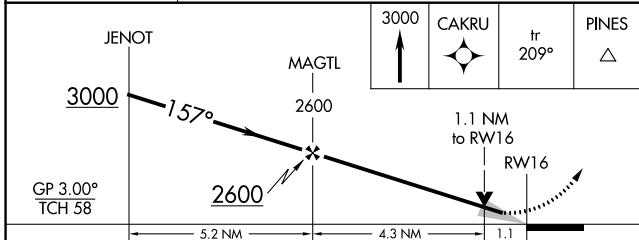
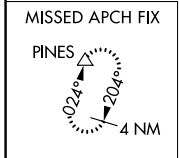
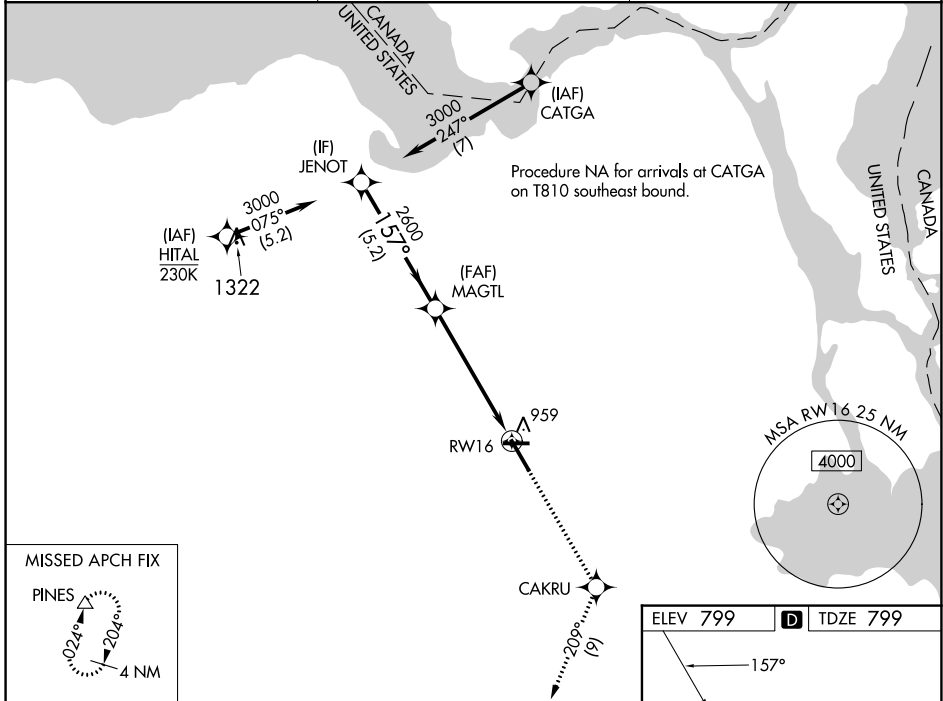
WAAS CH 69215 W16A	APP CRS 157°	Rwy Idg 7203 TDZE 799 Aprt Elev 799
--	------------------------	--

RNAV (GPS) RWY 16

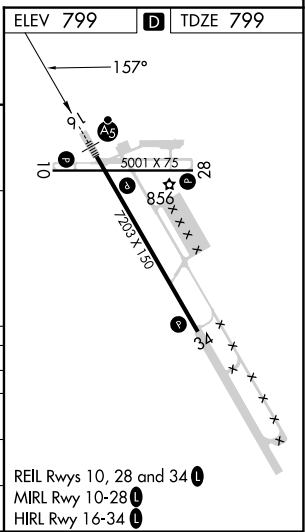
CHIPPEWA COUNTY INTL (CIU)

RNP APCH - GPS.		MALSR	MISSED APPROACH: Climb to 3000 direct CAKRU and on track 209° to PINES and hold.
<p>▼ For uncompensated Baro-VNAV systems, LNAV/VNAV NA below -16°C or above 54°C. ▲ For inop ALS, increase LNAV/VNAV all Cats visibility to 1 SM.</p>			

AWOS-3PT 127.575	TORONTO CENTER 132.65 344.5	UNICOM 123.0 (CTAF)
----------------------------	---------------------------------------	-------------------------------



CATEGORY	A	B	C	D
LPV DA	999-1/2		200 (200-1/2)	
LNAV/VNAV DA	1140-5/8		341 (400-5/8)	
LNAV MDA	1220-1/2 421 (500-1/2)		1220-3/4 421 (500-3/4)	
CIRCLING	1260-1 461 (500-1)		1260-1 1/2 461 (500-1/2) 1360-2 561 (600-2)	



EC-1, 31 OCT 2024 to 28 NOV 2024

EC-1, 31 OCT 2024 to 28 NOV 2024