

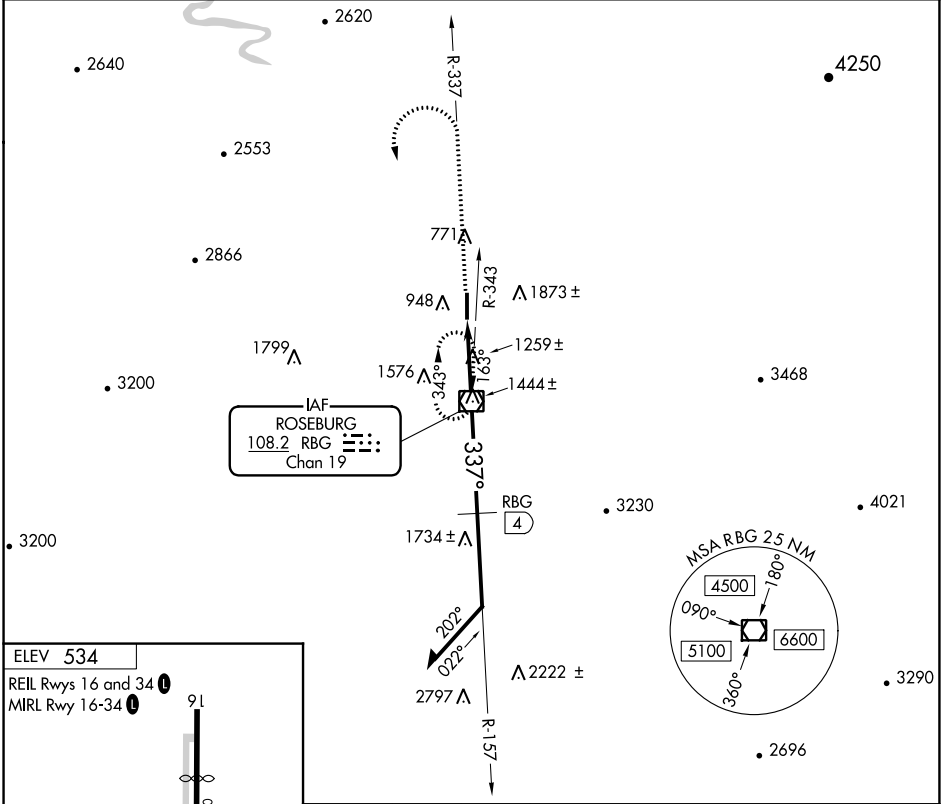
VOR/DME RBG 108.2 Chan 19	APP CRS 337°	Rwy Idg TDZE Apt Elev N/A N/A 534
---	------------------------	--

VOR-A
ROSEBURG RGNL (R.B.G)

⚠ Circling not authorized east of Rwy 16-34.
⚠ NA Procedure NA at night.
 Rwy 34 helicopter visibility reduction below 1 SM NA.

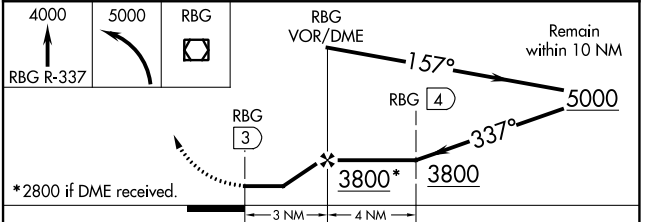
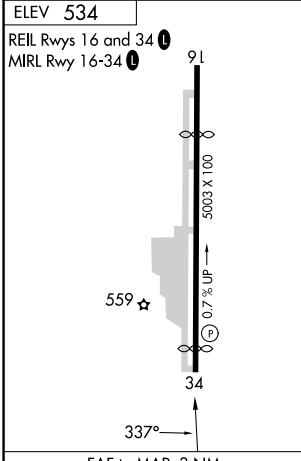
MISSED APPROACH: Climb to 4000 on RBG VOR/DME R-337 within 1.5 NM; then climbing left turn to 5000 direct RBG VOR/DME and hold.

ASOS 135.475	SEATTLE CENTER 127.55 239.0	UNICOM 122.8 (CTAF) 0
------------------------	---------------------------------------	--



NW-1, 31 OCT 2024 to 28 NOV 2024

NW-1, 31 OCT 2024 to 28 NOV 2024



FAF to MAP 3 NM					
Knots	60	90	120	150	180
Min:Sec	3:00	2:00	1:30	1:12	1:00
CATEGORY	A		B		C
CIRCLING	2600-1¼ 2066 (2100-1¼)		2600-1½ 2066 (2100-1½)		2600-3 2066 (2100-3)
DME MINIMUMS					
CIRCLING	1740-1¼ 1206 (1300-1¼)		1740-1½ 1206 (1300-1½)		2020-3 2100-3 1486 (1500-3) 1566 (1600-3)