

HI-TACAN Z RWY 24R

TACAN NKX Chan 33	APCH CRS 247°	Rwy Idg 24R	12,000	24L	8001
		TDZE	475	24L	477
		Arpt Elev	477		

AL-903 [USN]
MIRAMAR MCAS (JOE FOSS FLD) (KNKX)

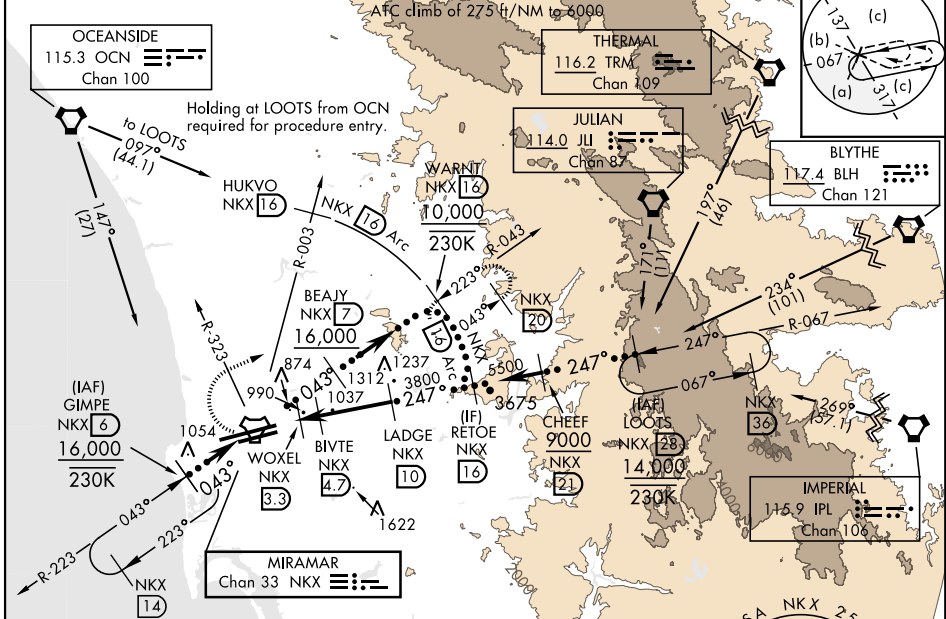
*When ALS inop, increase CAT CDE vis to 1 1/8 miles.
 ** CAT E circling not authorized S of Rwy 6R-24L.



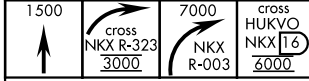
MISSED APPROACH: Climb to 1500, then climbing right turn to 7000 via NKX TACAN R-003 to HUKVO. Arc NE of NKX via 16 mile arc to WARNT and hold. Cross R-323 at 3000 mandatory, cross HUKVO at 6000 mandatory.

ATIS ★ 133.475 352.0	SOCAL APP CON 132.2 269.1	FOSS TOWER ★ 135.2 298.925 0	GND CON 128.625 307.325	CLNC DEL 125.975 254.325	ASR/ PAR	LA CENTER 291.7
-------------------------	------------------------------	---------------------------------	----------------------------	-----------------------------	-------------	--------------------

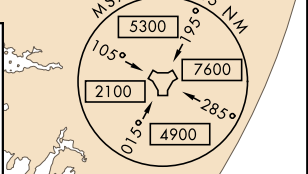
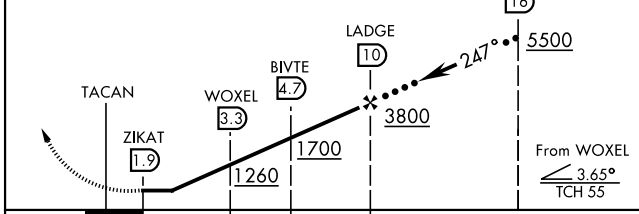
	Knots	60	120	180	240	300	360
	V/V(fpm)	275	550	825	1100	1375	1650



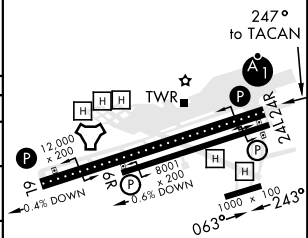
EMERG SAFE ALT 100 NM 13,600



VGS1 and descent angles not coincident.
 RETOE 16 5500
 From WOXEL 3.65° TCH 55



ELEV 477	TDZE 24R 475
	TDZE 24L 477



CATEGORY	C	D	E
S-24R *	1140-1 1/2	665 (700-1 1/2)	
SIDE-STEP 24L	1140-1 1/2 663 (700-1 1/2)	1140-2 663 (700-2)	1140-2 1/4 663 (700-2 1/4)
CIRCLING **	1140-1 1/2 663 (700-1 1/2)	1180-2 1/4 703 (800-2 1/4)	1360-3 883 (900-3)

HI-TACAN Z RWY 24R

SW-3, 31 OCT 2024 to 28 NOV 2024

SW-3, 31 OCT 2024 to 28 NOV 2024