

SAN DIEGO, CALIFORNIA

ILS Y or LOC/DME Y RWY 24R

LOC/DME I-NKX 111.15 Chan 48 (Y)	APCH CRS 243°	Rwy Idg 8001	24L 12,000	24R 475
		TDZE 477		
		Arpt Elev 477		

AL-903 [USN] MIRAMAR MCAS (JOE FOSS FLD) (KNKX)

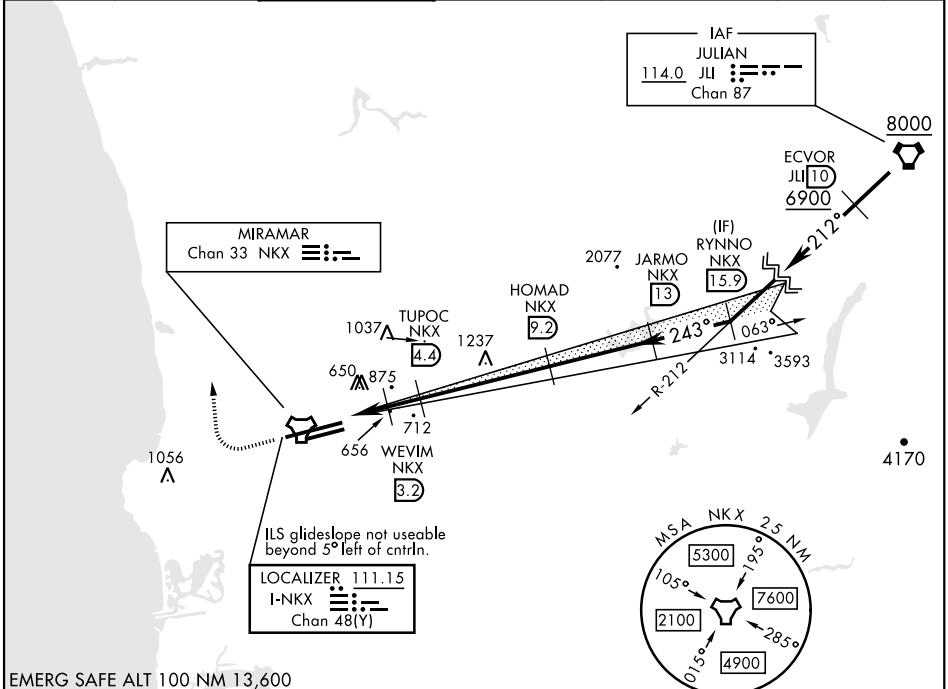
TACAN or RADAR required.

ALSF-1

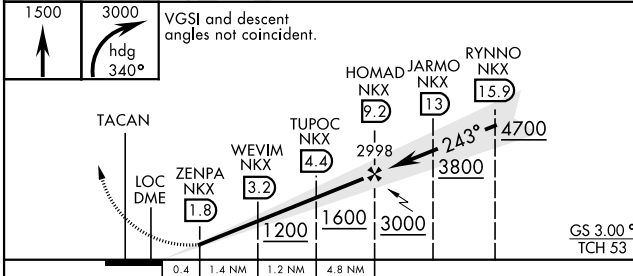
MISSED APPROACH: Climb to 1500, then climbing right turn to 3000 via heading 340°. Expect radar vectors.

* When ALS inop, increase vis to 3/4 mile.
 ** When ALS inop, increase CAT AB vis to 1 mile, CAT CDE vis to 1 1/2 miles.
 *** CAT E circling not authorized S of Rwy 6R-24L.

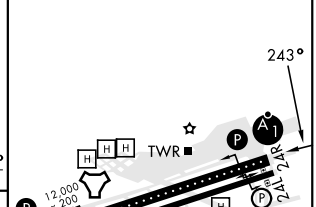
ATIS ★ 133.475 352.0	SOCAL APP CON 132.2 269.1	FOSS TOWER ★ 135.2 298.925	GND CON 128.625 307.325	CLNC DEL 125.975 254.325	LA CENTER 291.7	ASR/ PAR
--	---	--	---	--	---------------------------	-------------



EMERG SAFE ALT 100 NM 13,600



ELEV 477	TDZE 24L 477
	TDZE 24R 475



CATEGORY	A	B	C	D	E
S-ILS 24R*	675 - 1/2		200	(200-1/2)	
S-LOC/DME 24R**	920-1/2	445 (500-1/2)	920-7/8	445 (500-7/8)	
SIDESTEP 24L	920-1	443 (500-1)	920-1 1/2 443 (500-1 1/2)	920-2 443 (500-2)	
CIRCLING***	940-1 463 (500-1)	960-1 483 (500-1)	960-1 1/2 483 (500-1 1/2)	1180-2 1/4 703 (800-2 1/4)	1360-3 883 (900-3)

HIRL Rwy 6L-24R

HIRL Rwy 6R-24L

SAN DIEGO, CALIFORNIA
Orig 14JUL22

32°52'N-117°09'W

MIRAMAR MCAS (JOE FOSS FLD) (KNKX)

ILS Y or LOC/DME Y RWY 24R

SW-3, 31 OCT 2024 to 28 NOV 2024

SW-3, 31 OCT 2024 to 28 NOV 2024