

REDIN-FOUR DEPARTURE (REDIN4 • REDIN)

MIRAMAR MCAS (JOE FOSS FLD) (KNKX)

SAN DIEGO, CALIFORNIA

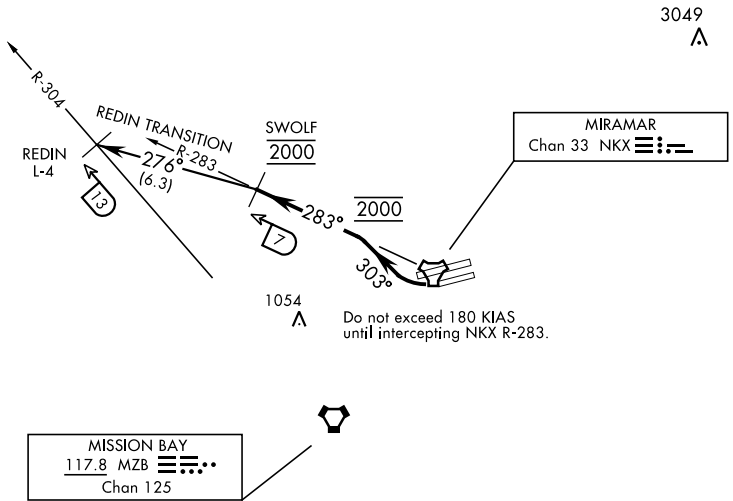
ATIS ★ 133.475 352.0
 CLNC DEL
 125.975 254.325
 GND CON
 128.625 307.325
 FOSS TOWER ★
 135.2 298.925
 SOCAL DEP CON
 119.6 363.1 W

SL-903 [USN]

Rwy	Knots	60	120	180	240	300	360
24L/R	V/V(fpm)	780	1560	2340	3120	3900	4680

ATC Climb Rate to 2000

RESTRICTED TO CAT A & B ACFT ONLY



3049
A

EMERG SAFE ALT 100 NM 13,600



DEPARTURE ROUTE DESCRIPTION

TAKE-OFF RWY 24L/R: Climbing right turn to 2000 via heading 303° to intercept and proceed via NKX TACAN R-283 to SWOLF. Complete turn within NKX 2 DME. Cross NKX R-283/3 DME at 2000 mandatory. Maintain 2000 at SWOLF mandatory.

REDIN TRANSITION (REDIN4 • REDIN): Turn left heading 276° to intercept MZB VORTAC R-304 at REDIN.

REDIN-FOUR DEPARTURE (REDIN4 • REDIN)

Orig 10OCT19

SAN DIEGO, CALIFORNIA

MIRAMAR MCAS (JOE FOSS FLD) (KNKX)