

VITKO-THREE DEPARTURE (VITK03 • VITKO)

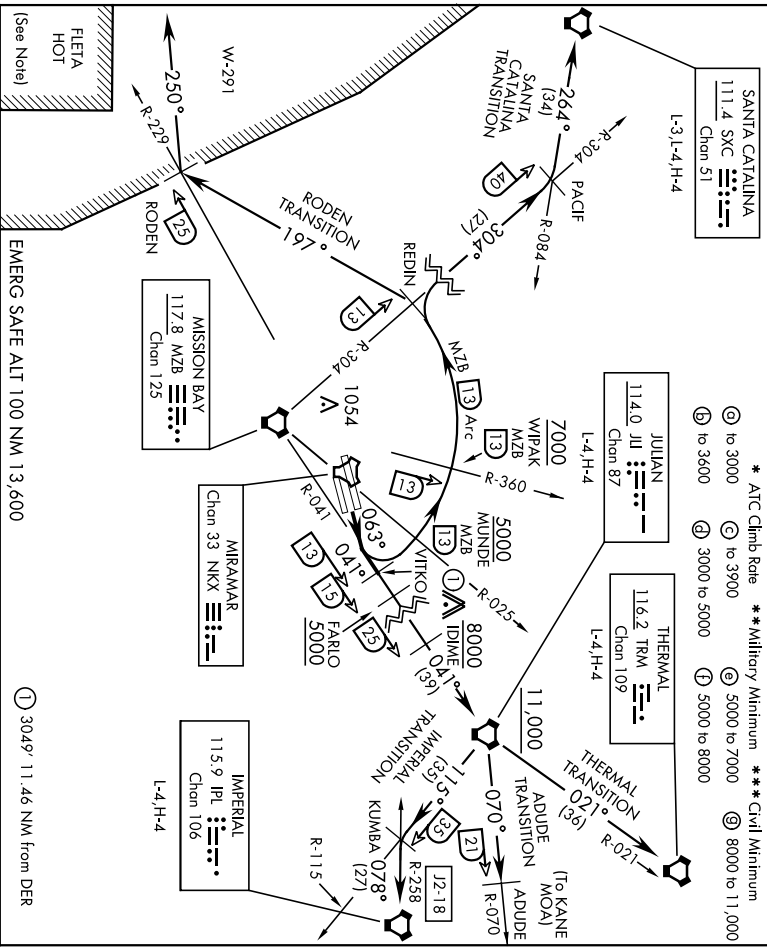
MIRAMAR MCAS (JOE FOSS FLD) (KNKK) SAN DIEGO, CALIFORNIA

ATIS * 133.475 352.0
 CLNC DEL 123.975 234.325
 GND CON 128.625 307.325
 FOSS TOWER * 135.2 298.925
 SOCIAL DEP CON 132.2 269.1 E

AL-903 [USN]

| Rwy | Knots | 60 | 120 | 180 | 240 | 300 | 360 |
|----------|----------|-----|------|------|------|------|------|
| * 6L/R | V/V(fpm) | 570 | 1040 | 1560 | 2080 | 2600 | 3120 |
| ** 6L/R | V/V(fpm) | 280 | 560 | 840 | 1120 | 1400 | 1680 |
| *** 6L/R | V/V(fpm) | 300 | 600 | 900 | 1200 | 1500 | 1800 |
| * 6L/R | V/V(fpm) | 880 | 1360 | 2040 | 2720 | 3400 | 4080 |
| * 6L/R | V/V(fpm) | 353 | 706 | 1059 | 1412 | 1765 | 2118 |
| * 6L/R | V/V(fpm) | 300 | 600 | 900 | 1200 | 1500 | 1800 |
| * 6L/R | V/V(fpm) | 220 | 440 | 660 | 880 | 1100 | 1320 |

- * ATC Climb Rate ** Military Minimum *** Civil Minimum
- ⓐ to 3000 ⓑ to 3900 Ⓒ 5000 to 7000 Ⓓ 8000 to 11,000
- ⓑ to 3600 ⓓ 3000 to 5000 ⓔ 5000 to 8000



DEPARTURE ROUTE DESCRIPTION

TAKEOFF Rwy 6L/R: Climb via heading 063° to intercept and proceed via MZB VORTAC R-041 to VITKO. Join MZB R-041 at or above 3000. Thence...

ADUDE TRANSITION (VITK03 • ADUDE): Via MZB R-041 to JII VORTAC. Then JII R-070 to ADUDE. Cross FARLO at or above 5000. Cross IDIME at or above 8000. Cross JII VORTAC at or above 11,000. (To operate in KANE MOA.)

IMPERIAL TRANSITION (VITK03 • IPL): Via MZB R-041 to JII VORTAC. Then via JII R-115 to KUMBA INT, then via IPL VORTAC R-258 to IPL. Cross FARLO at or above 5000. Cross IDIME at or above 8000. Cross JII VORTAC at or above 11,000.

(Continued on next page)

VITKO-THREE DEPARTURE (VITK03 • VITKO)

22111

VITKO-THREE DEPARTURE (VITK03 • VITKO)

MIRAMAR MCAS (JOE FOSS FLD) (KNKX)
SAN DIEGO, CALIFORNIA

AL-903 [USN]

DEPARTURE ROUTE DESCRIPTION
(Continued)

RODEN TRANSITION (VITK03 • RODEN): Arc N of MZB VORTAC via the 13 mile arc to REDIN. Then turn left heading 197° to intercept NKK R-229 at RODEN. Then turn right heading 250° for entry into W-291. Cross MUNDE at or above 5000. Cross WIPAK at or above 7000.

SANTA CATALINA TRANSITION (VITK03 • SXC): Arc N of MZB VORTAC via the 13 mile arc to REDIN. Then via MZB R-304 to PACIF INT. Then via SXC R-084 to SXC VORTAC. Cross MUNDE at or above 5000. Cross WIPAK at or above 7000.

THERMAL TRANSITION (VITK03 • TRM): Via MZB R-041 to JII VORTAC. Then via JII R-021 to TRM VORTAC. Cross FARLO at or above 5000. Cross IDIME at or above 8000. Cross JII VORTAC at or above 11,000.

NOTE:

- (1) FLETA HOT-ACTIVE FIRING AREA (DANGER, REMAIN CLEAR)
- (2) ALL AIRCRAFT SHOULD MAINTAIN LAST ASSIGNED HEADING/RADIAL AND ALTITUDE TO AVOID INBOUND MILITARY OR CIVIL AIRCRAFT AT HIGHER ALTITUDES!

VITKO-THREE DEPARTURE (VITK03 • VITKO)

Orig 13SEP18

SAN DIEGO, CALIFORNIA
MIRAMAR MCAS (JOE FOSS FLD) (KNKX)