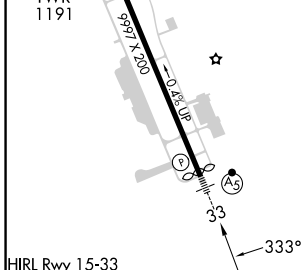
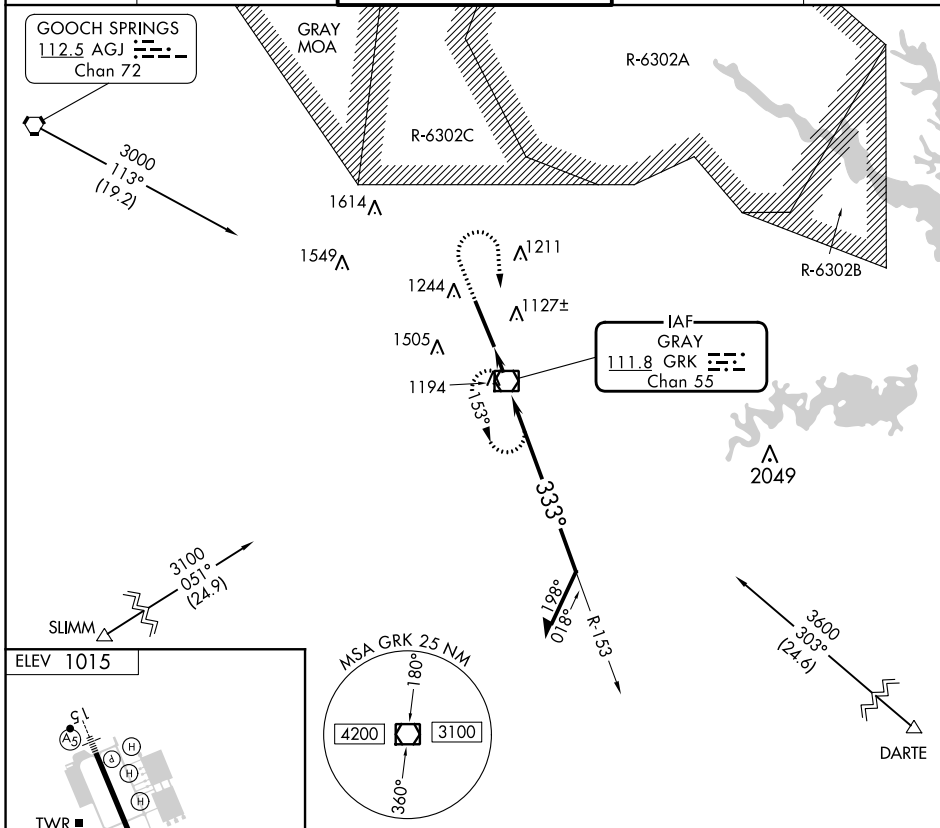


VOR/DME GRK 111.8 Chan 55	APP CRS 333°	Rwy Idg TDZE Apt Elev	N/A N/A 1015
---	------------------------	-----------------------------	---

VOR-A
ROBERT GRAY AAF (GRK)

NA Circling NA W of Rwy 15-33. MISSED APPROACH: Climb to 2000 then climbing right turn to 3000 direct GRK VOR/DME and hold.

ATIS 124.9	GRAY APP CON 120.075 323.15	GRAY TOWER 120.75(CTAF) 285.5	GND CON 121.8 279.5	CLNC DEL 126.2 251.1
----------------------	---------------------------------------	---	-------------------------------	--------------------------------



ELEV 1015	MSA GRK 25 NM	2000	3000	GRK	GRK VOR/DME	Remain within 10 NM
		↑	↷	☐	↘ 153°	
				GRK 1.4	↘ 333°	
				1.4 NM	2100	

FAF to MAP 1.4 NM					CATEGORY	A	B	C	D
Knots	60	90	120	150	180	1540-1	525 (600-1)	1560-1½	1620-2
Min:Sec	1:24	0:56	0:42	0:34	0:28	<input checked="" type="checkbox"/> CIRCLING		545 (600-1½)	605 (700-2)

SC-3, 31 OCT 2024 to 28 NOV 2024

SC-3, 31 OCT 2024 to 28 NOV 2024