

WAAS CH <b>86921</b> <b>W07A</b>	APP CRS <b>075°</b>	Rwy ldg TDZE <b>241</b> Apt Elev <b>244</b>	<b>6389</b>
--	------------------------	---	-------------

# RNAV (GPS) RWY 7

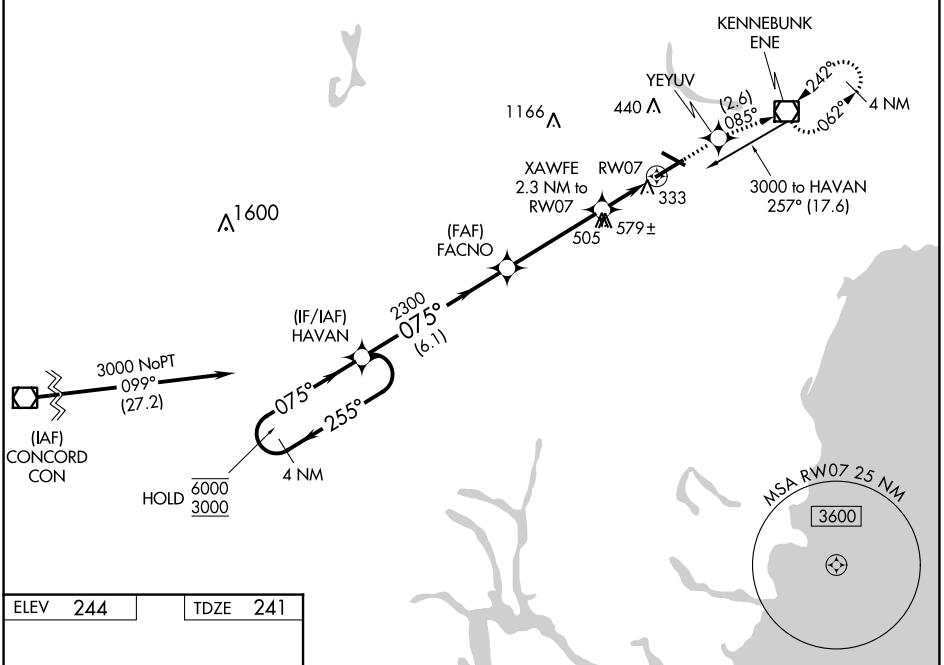
SANFORD SEACOAST RGNL (SFM)

RNP APCH - GPS.

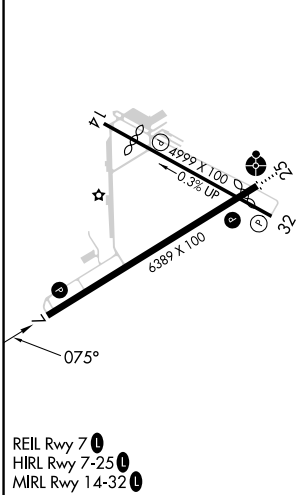
**⚠** Rwy 7 helicopter visibility reduction below 3/4 SM NA. For uncompensated Baro-VNAV systems, LNAV/VNAV NA below -15°C or above 54°C. Baro-VNAV and VDP NA when using Rochester altimeter setting. When local altimeter setting not received, use Rochester altimeter setting: increase LPV DA to 479; increase LNAV/VNAV DA to 699 and visibility all Cats 1/8 SM, increase all MDAs 40 feet, and Circling Cat C visibility 1/4 SM.

**MISSED APPROACH:** Climb to 3000 direct YEYUV and on track 085° to ENE VOR/DME and hold, continue climb-in-hold to 3000.

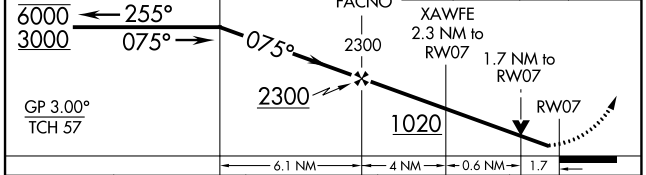
AWOS-3PT <b>120.025</b>	PORTLAND APP CON★ <b>119.75 269.35</b>	CLNC DEL <b>121.725</b>	UNICOM <b>123.075 (CTAF)</b>
----------------------------	---	----------------------------	---------------------------------



ELEV 244	TDZE 241
----------	----------



VGSI and RNAV glidepath not coincident (VGSI Angle 3.00/TCH 53).  
 4 NM Holding Pattern HAVAN  
 3000 YEYUV tr 085° ENE



CATEGORY	A	B	C	D
LPV DA		441-3/4	200 (200-3/4)	
LNAV/VNAV DA		650-1 3/8	409 (500-1 3/8)	
LNAV MDA	840-1	599 (600-1)	840-1 3/4	599 (600-1 3/4)
<b>C</b> CIRCLING	840-1	596 (600-1)	1180-2 3/4 936 (1000-2 3/4)	1240-3 996 (1000-3)

NE-1, 31 OCT 2024 to 28 NOV 2024

NE-1, 31 OCT 2024 to 28 NOV 2024